



# MILLENNIUM WATER

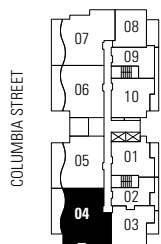
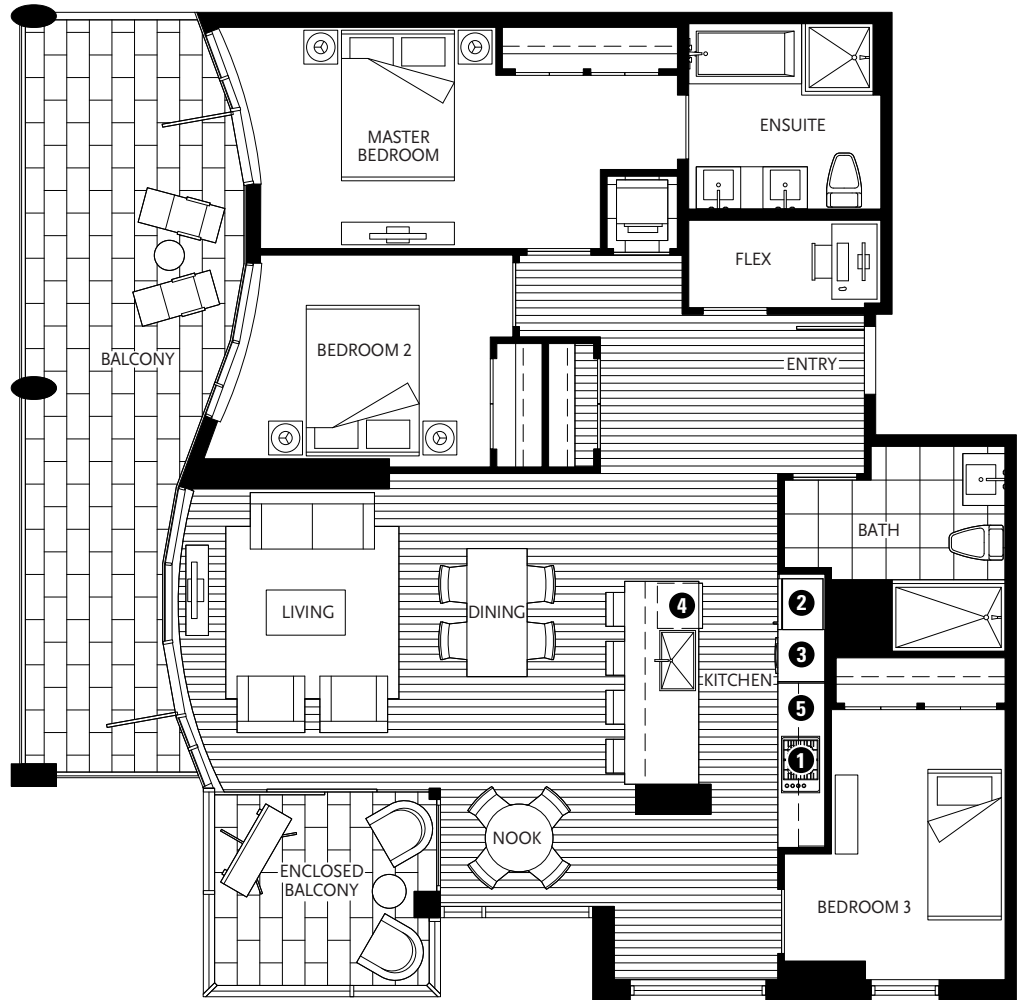
A GREEN WATERFRONT COMMUNITY

## PLAN D

## 1616 COLUMBIA STREET

3 BEDROOM + ENCLOSED BALCONY + FLEX  
1429 SF LIVING  
315 SF BALCONY

- 1 Miele gas cooktop
- 2 Sub-Zero refrigerator
- 3 Miele wall oven & Panasonic built-in microwave
- 4 Miele dishwasher
- 5 Eggersmann of Germany eco-wood cabinetry



WALTER HARDWICK AVENUE



**5TH + 7TH FLOOR**  
ALSO AVAILABLE ON FLOORS 3, 4, 6

Washer/dryer are optional items. Dimensions, sizes, areas, specifications, layouts and materials are approximate only and subject to change without notice. Floorplates and unit numbers may vary between floors and appliance brands and sizes are subject to change. Please see a sales representative for more details. E.&O.E.



**RENNIE**  
MARKETING  
SYSTEMS  
GREEN