

PLAN A

UNIT 401-2601

1 BEDROOM + FLEX

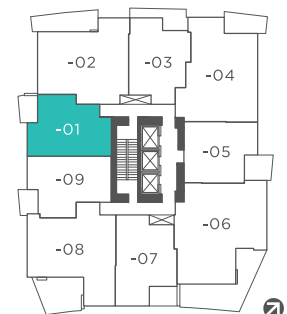
Interior 545 sq ft (approx)

Exterior 60 sq ft (approx)

Total 605 sq ft (approx)



- 1 30" KitchenAid Refrigerator
- 2 30" KitchenAid Gas Cooktop
- 3 30" KitchenAid Combination Hoodfan + Microwave
- 4 30" KitchenAid Convection Oven
- 5 24" KitchenAid Dishwasher
- 6 Whirlpool Full Size Washer and Dryer



FLOOR 4-26



PLAN A1

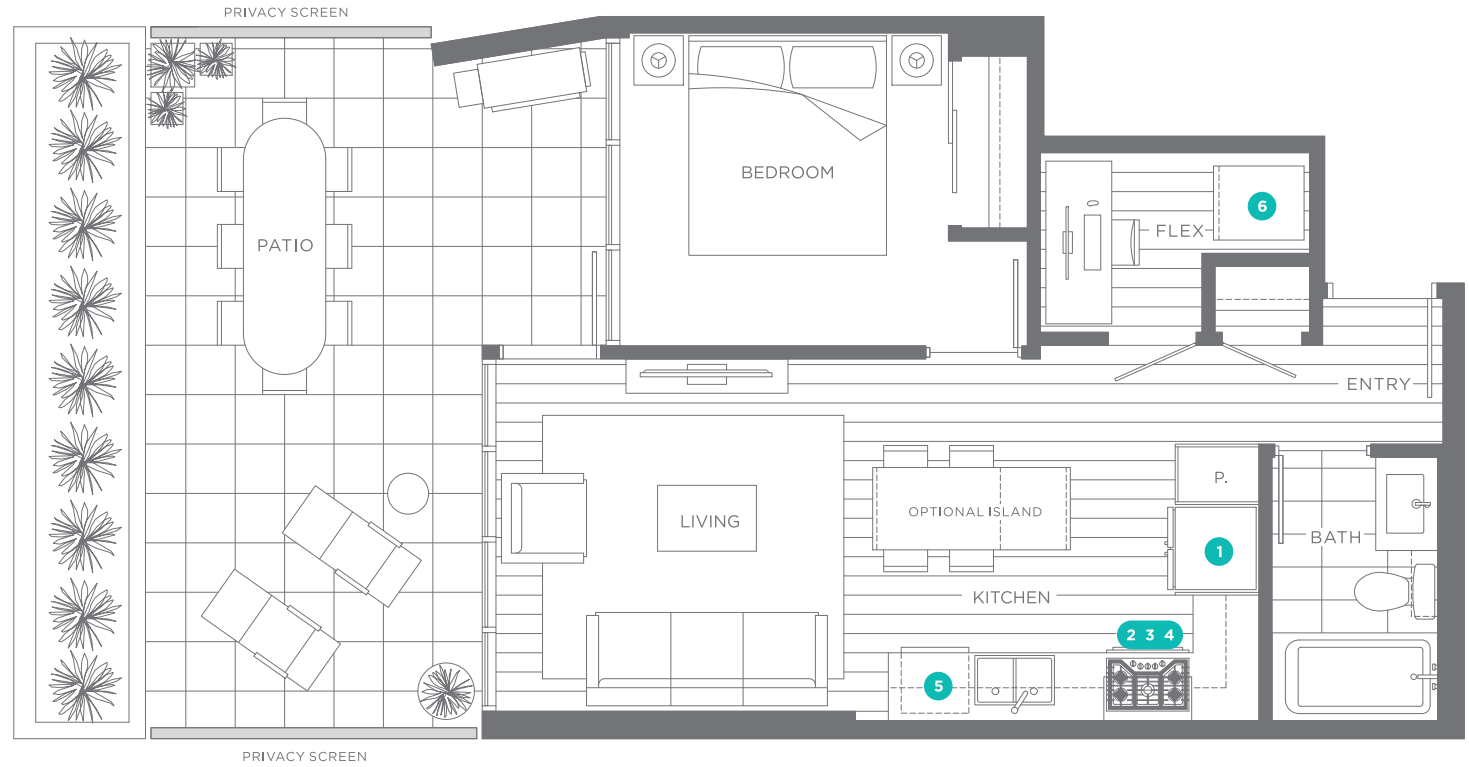
UNIT 301

1 BEDROOM + FLEX

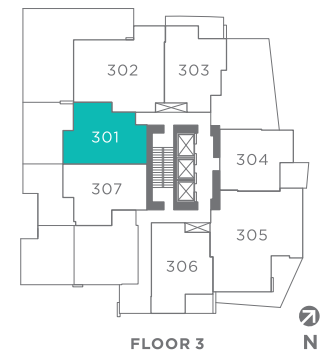
Interior 545 sq ft (approx)

Exterior 330 sq ft (approx)

Total 875 sq ft (approx)



- ① 30" KitchenAid Refrigerator
- ② 30" KitchenAid Gas Cooktop
- ③ 30" KitchenAid Combination Hoodfan + Microwave
- ④ 30" KitchenAid Convection Oven
- ⑤ 24" KitchenAid Dishwasher
- ⑥ Whirlpool Full Size Washer and Dryer



PLAN B

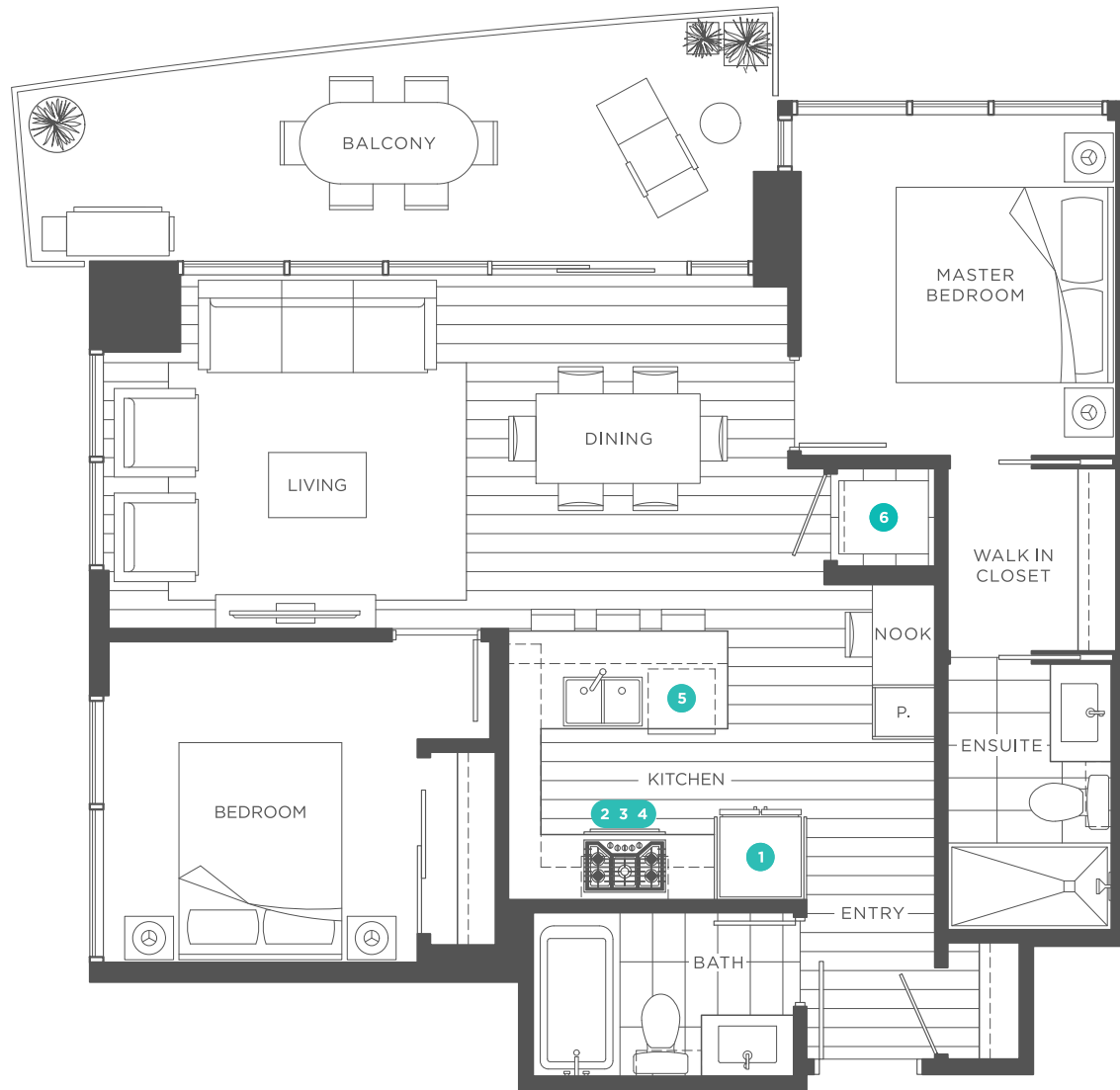
UNIT 402-2602

2 BEDROOM

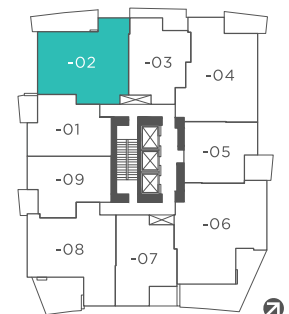
Interior 800 sq ft (approx)

Exterior 150 sq ft (approx)

Total 950 sq ft (approx)



- 1 30" KitchenAid Refrigerator
- 2 30" KitchenAid Gas Cooktop
- 3 30" KitchenAid Combination Hoodfan + Microwave
- 4 30" KitchenAid Convection Oven
- 5 24" KitchenAid Dishwasher
- 6 Whirlpool Full Size Washer and Dryer



FLOOR 4-26



PLAN B1

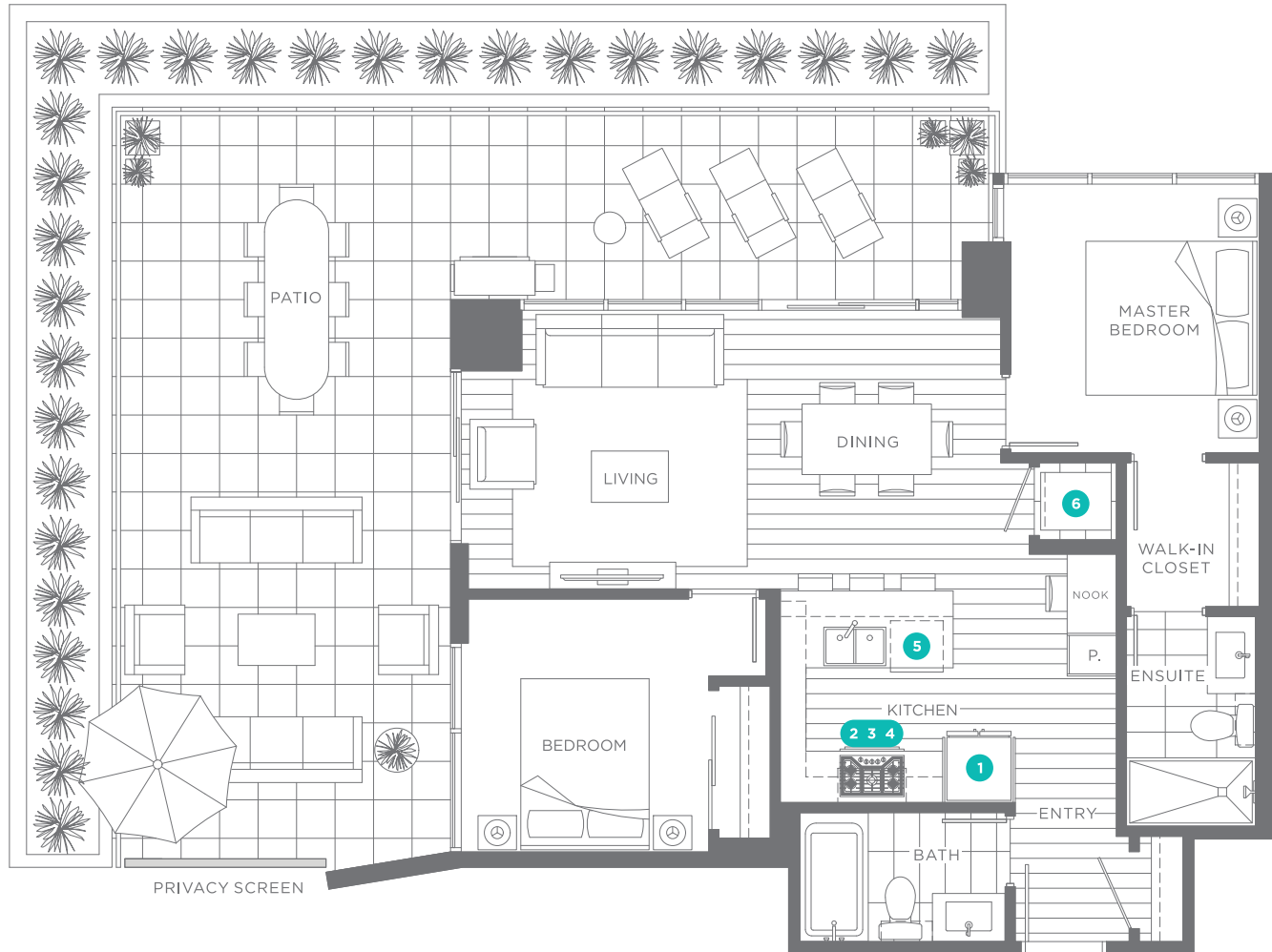
UNIT 302

2 BEDROOM

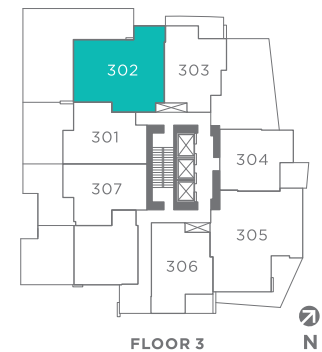
Interior 795 sq ft (approx)

Exterior 790 sq ft (approx)

Total 1,585 sq ft (approx)



- ① 30" KitchenAid Refrigerator
- ② 30" KitchenAid Gas Cooktop
- ③ 30" KitchenAid Combination Hoodfan + Microwave
- ④ 30" KitchenAid Convection Oven
- ⑤ 24" KitchenAid Dishwasher
- ⑥ Whirlpool Full Size Washer and Dryer



Dimensions, square footage and floor plans are approximate only. Final dimensions, square footage and floor plans may vary and will be determined by final strata plan measurements. Final floor plans may be mirror image of the floor plans shown above. The Developer reserves the right to make changes to the floor plans, project design, appliances, specifications, and features. E.&O.E.

PLAN C

UNIT 403-2603*

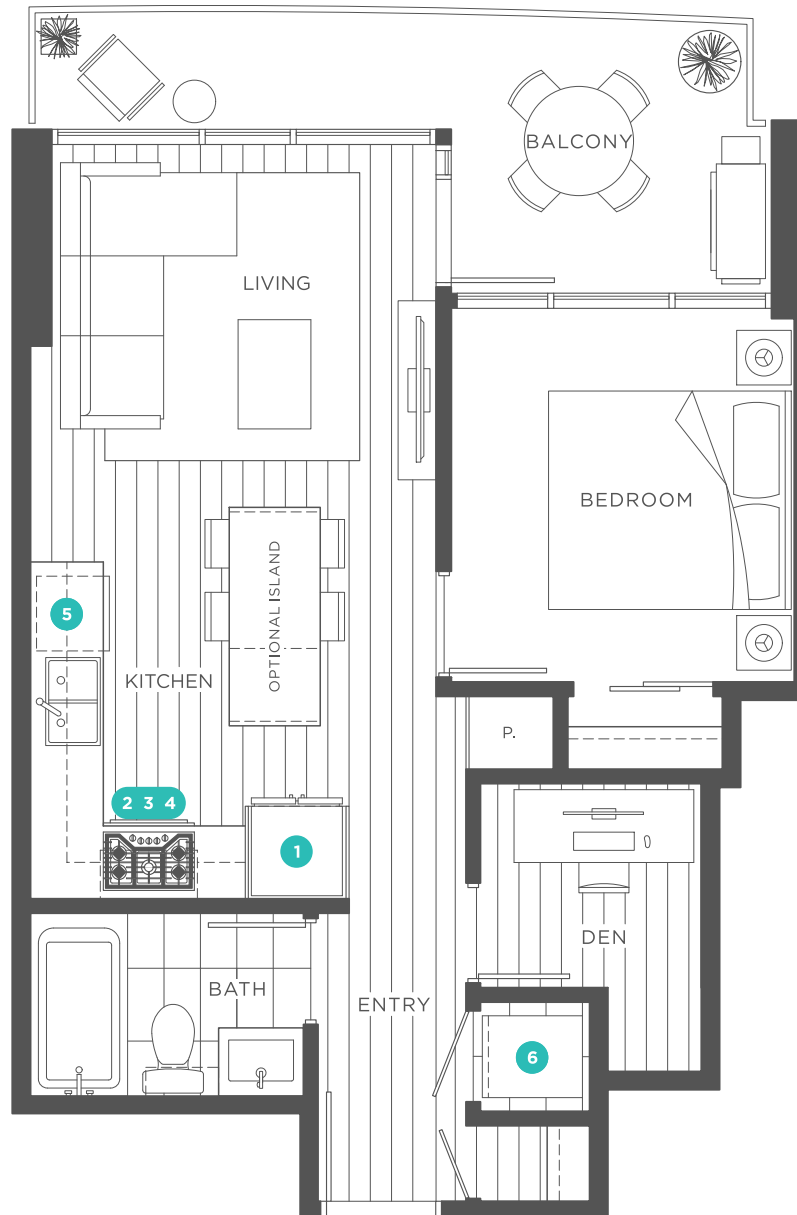
1 BEDROOM + DEN

Interior 540 sq ft (approx)

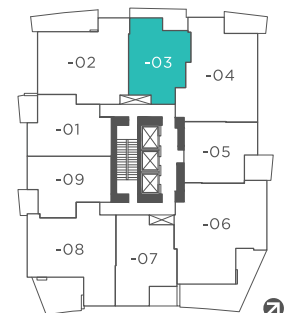
Exterior 110 sq ft (approx)

Total 650 sq ft (approx)

*Excluding 803 & 1803



- 1 30" KitchenAid Refrigerator
- 2 30" KitchenAid Gas Cooktop
- 3 30" KitchenAid Combination Hoodfan + Microwave
- 4 30" KitchenAid Convection Oven
- 5 24" KitchenAid Dishwasher
- 6 Whirlpool Full Size Washer and Dryer



FLOOR 4-26



PLAN C2

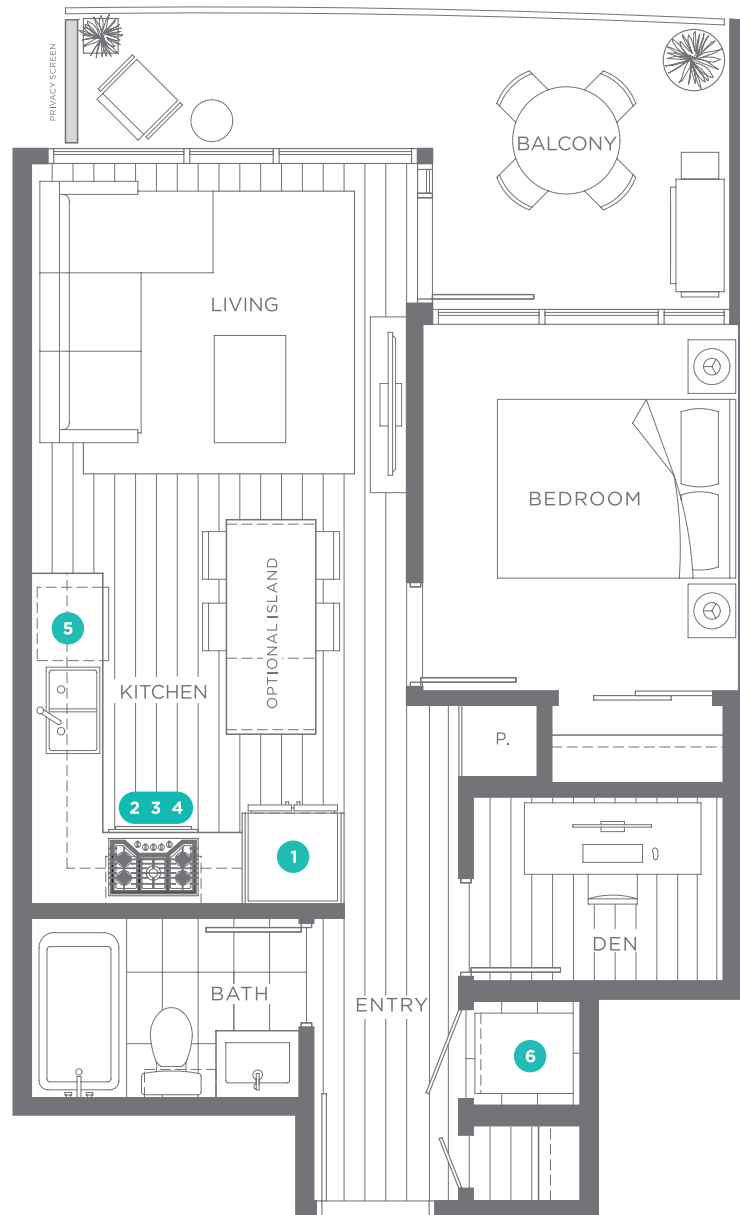
UNIT 303

1 BEDROOM + DEN

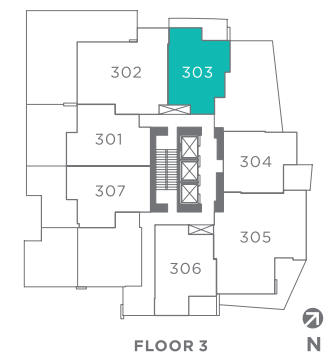
Interior 555 sq ft (approx)

Exterior 110 sq ft (approx)

Total 665 sq ft (approx)



- 1 30" KitchenAid Refrigerator
- 2 30" KitchenAid Gas Cooktop
- 3 30" KitchenAid Combination Hoodfan + Microwave
- 4 30" KitchenAid Convection Oven
- 5 24" KitchenAid Dishwasher
- 6 Whirlpool Full Size Washer and Dryer



Dimensions, square footage and floor plans are approximate only. Final dimensions, square footage and floor plans may vary and will be determined by final strata plan measurements. Final floor plans may be mirror image of the floor plans shown above. The Developer reserves the right to make changes to the floor plans, project design, appliances, specifications, and features. E.&O.E.

PLAN D

UNIT 404-2604*

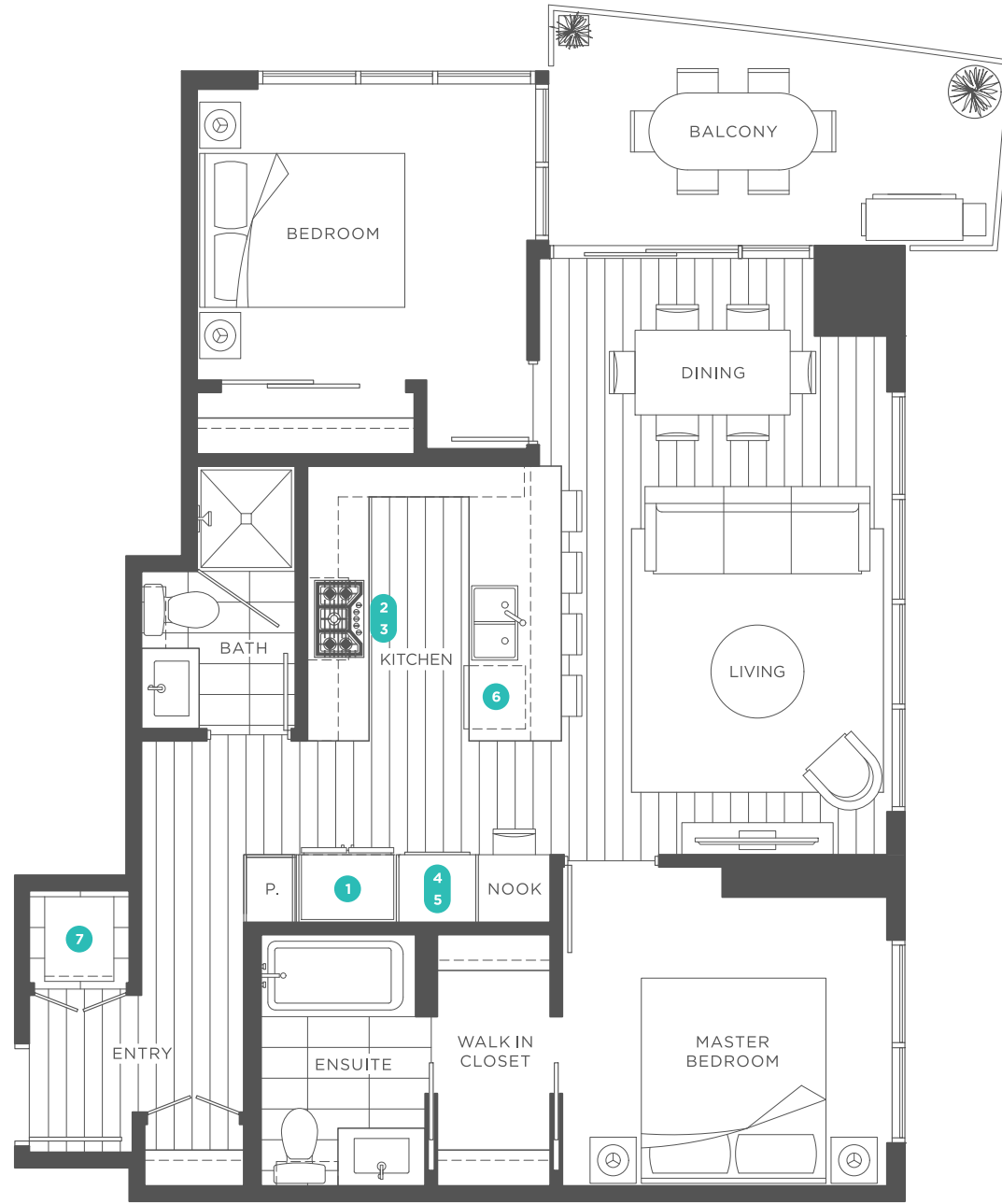
2 BEDROOM

Interior 870 sq ft (approx)

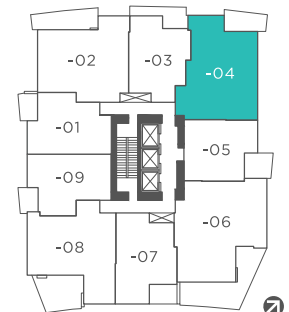
Exterior 100 sq ft (approx)

Total 970 sq ft (approx)

*Excluding 804 & 1804



- 1 36" KitchenAid Refrigerator
- 2 30" KitchenAid Gas Cooktop
- 3 30" KitchenAid Hoodfan
- 4 30" KitchenAid Convection Oven
- 5 KitchenAid Microwave with Trim Kit
- 6 24" KitchenAid Dishwasher
- 7 Whirlpool Full Size Washer and Dryer



FLOOR 4-26



PLAN D1

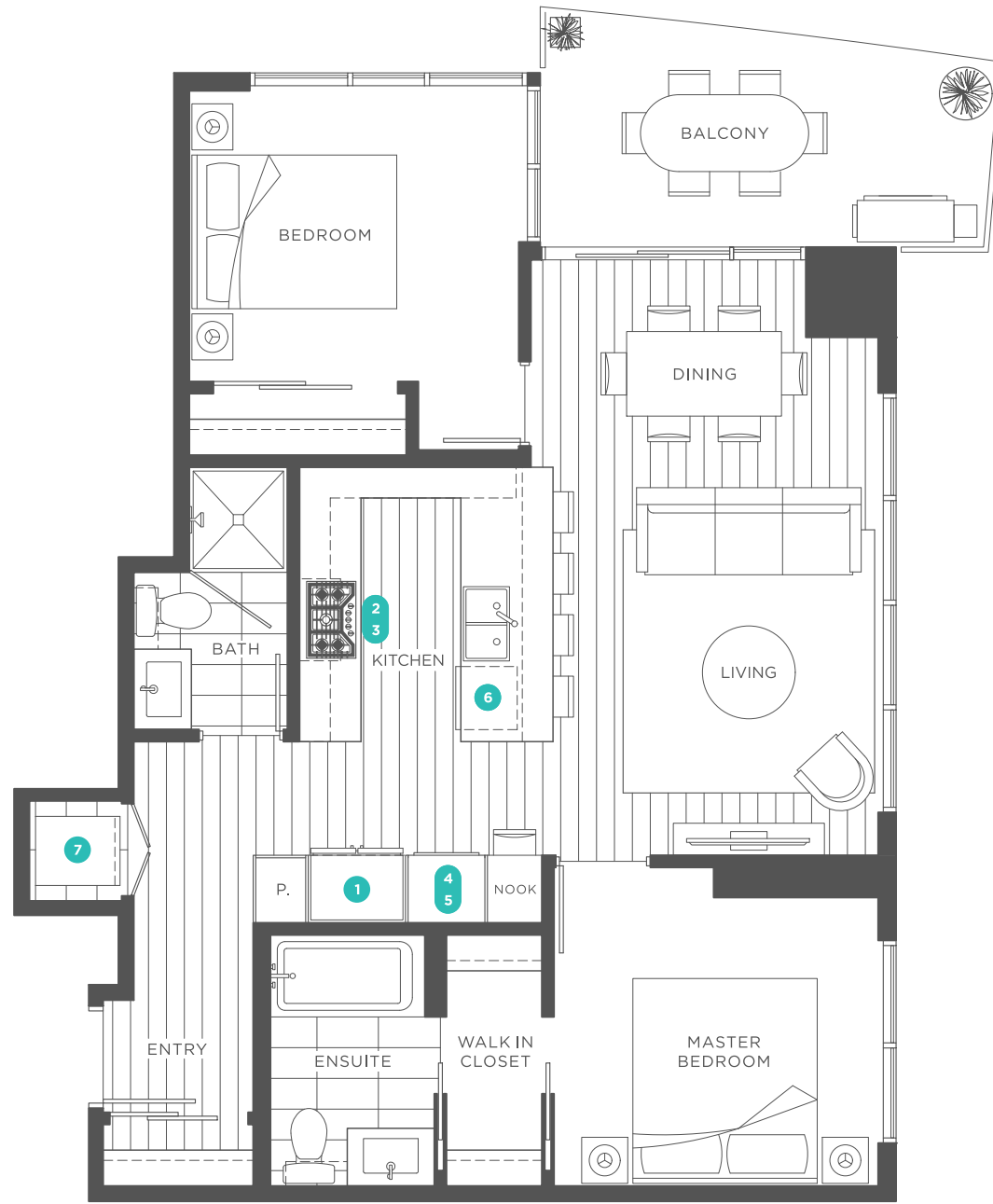
UNIT 804 & 1804

2 BEDROOM

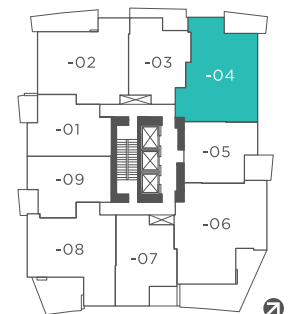
Interior 850 sq ft (approx)

Exterior 100 sq ft (approx)

Total 950 sq ft (approx)



- 1 36" KitchenAid Refrigerator
- 2 30" KitchenAid Gas Cooktop
- 3 30" KitchenAid Hoodfan
- 4 30" KitchenAid Convection Oven
- 5 KitchenAid Microwave with Trim Kit
- 6 24" KitchenAid Dishwasher
- 7 Whirlpool Full Size Washer and Dryer



FLOOR 8 & 18



PLAN E

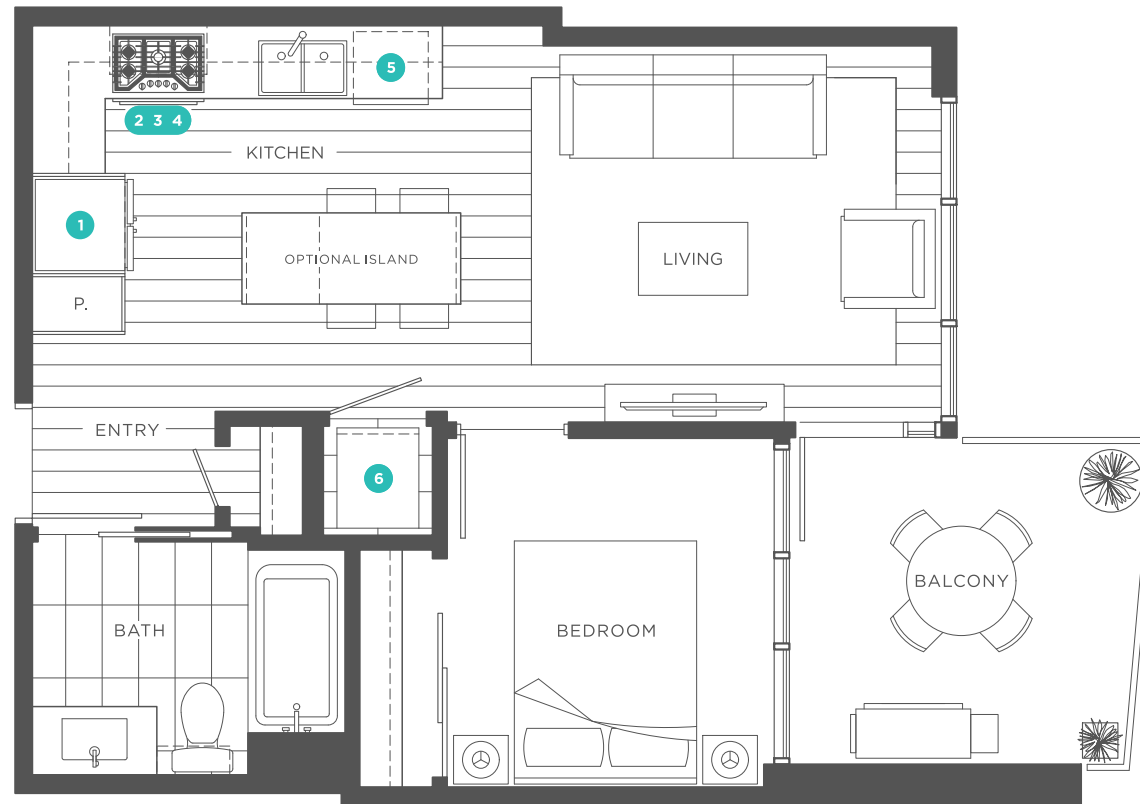
UNIT 304, 405-2605

1 BEDROOM

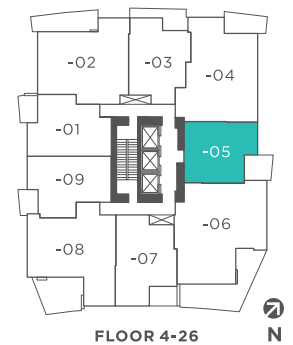
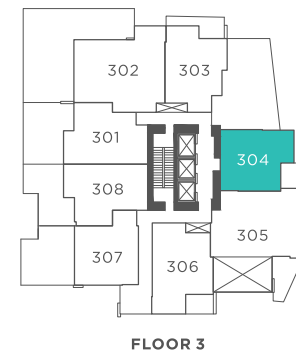
Interior 515 sq ft (approx)

Exterior 95 sq ft (approx)

Total 610 sq ft (approx)



- ① 30" KitchenAid Refrigerator
- ② 30" KitchenAid Gas Cooktop
- ③ 30" KitchenAid Combination Hoodfan + Microwave
- ④ 30" KitchenAid Convection Oven
- ⑤ 24" KitchenAid Dishwasher
- ⑥ Whirlpool Full Size Washer and Dryer



PLAN F

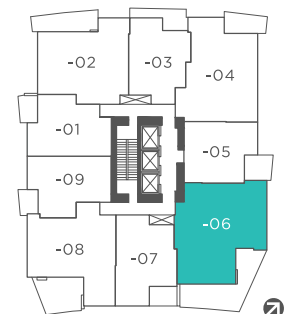
UNIT 406-2606

3 BEDROOM

Interior 990 sq ft (approx)
 Exterior 305 sq ft (approx)
 Total 1,295 sq ft (approx)



- ❶ 36" KitchenAid Refrigerator
- ❷ 30" KitchenAid Gas Cooktop
- ❸ 30" KitchenAid Hoodfan
- ❹ 30" KitchenAid Convection Oven
- ❺ KitchenAid Microwave with Trim Kit
- ❻ 24" KitchenAid Dishwasher
- ❼ Whirlpool Full Size Washer and Dryer



FLOOR 4-26

PLAN F1

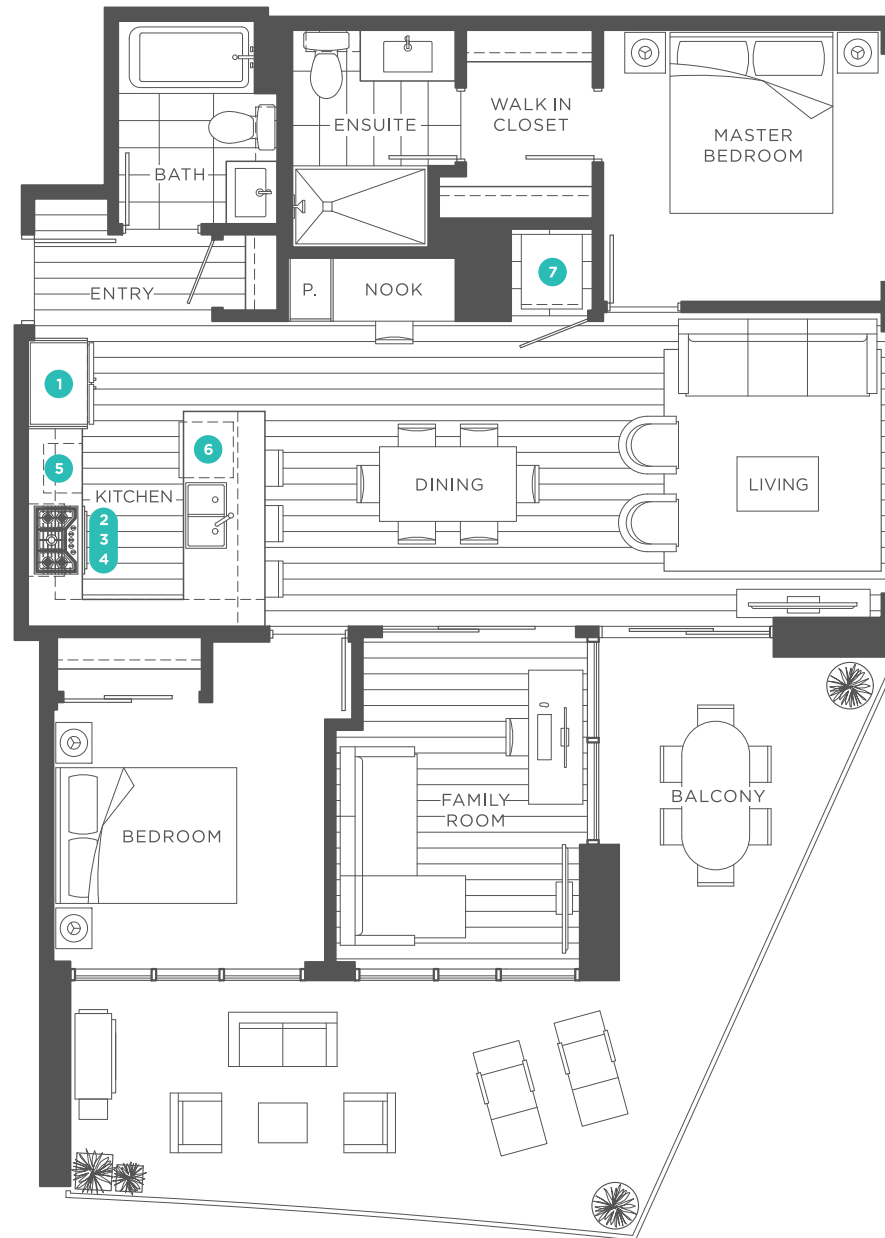
UNIT 406-2606

2 BEDROOM + FAMILY ROOM

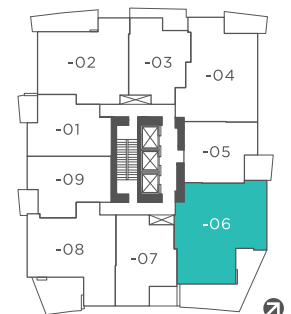
Interior 990 sq ft (approx)

Exterior 305 sq ft (approx)

Total 1,295 sq ft (approx)



- 1 36" KitchenAid Refrigerator
- 2 30" KitchenAid Gas Cooktop
- 3 30" KitchenAid Hoodfan
- 4 30" KitchenAid Convection Oven
- 5 KitchenAid Microwave with Trim Kit
- 6 24" KitchenAid Dishwasher
- 7 Whirlpool Full Size Washer and Dryer



FLOOR 4-26



PLAN G

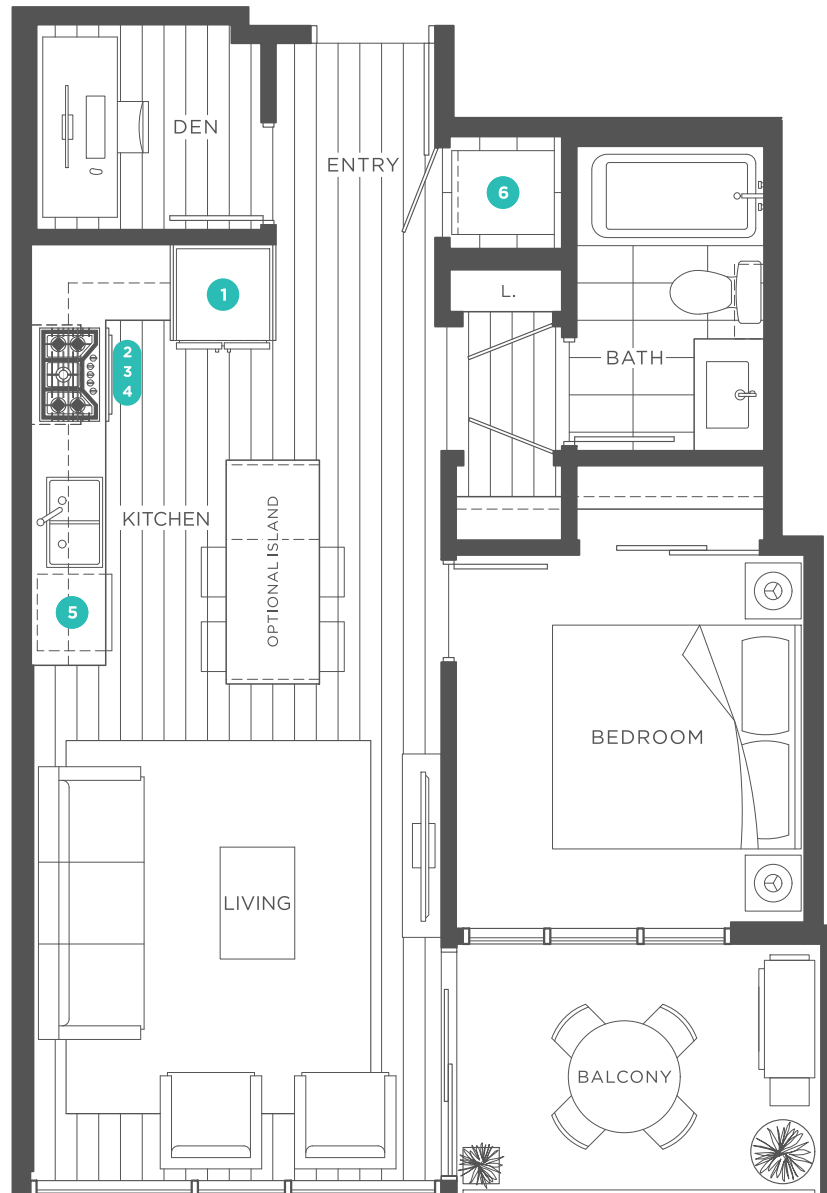
UNIT 306, 407-2607

1 BEDROOM + DEN

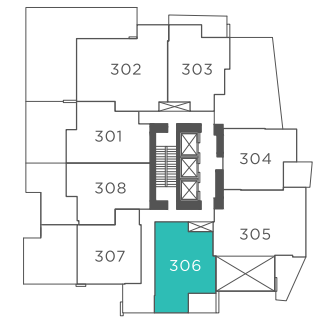
Interior 580 sq ft (approx)

Exterior 70 sq ft (approx)

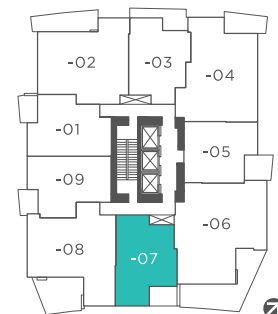
Total 650 sq ft (approx)



- 1 30" KitchenAid Refrigerator
- 2 30" KitchenAid Gas Cooktop
- 3 30" KitchenAid Combination Hoodfan + Microwave
- 4 30" KitchenAid Convection Oven
- 5 24" KitchenAid Dishwasher
- 6 Whirlpool Full Size Washer and Dryer



FLOOR 3



FLOOR 4-26



PLAN H

UNIT 408-2608

2 BEDROOM

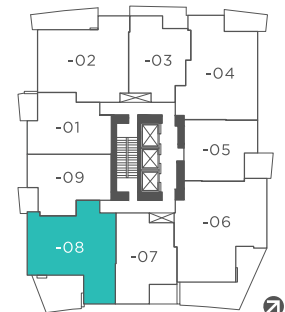
Interior 810 sq ft (approx)

Exterior 190 sq ft (approx)

Total 1,000 sq ft (approx)



- 1 36" KitchenAid Refrigerator
- 2 30" KitchenAid Gas Cooktop
- 3 30" KitchenAid Hoodfan
- 4 30" KitchenAid Convection Oven
- 5 KitchenAid Microwave with Trim Kit
- 6 24" KitchenAid Dishwasher
- 7 Whirlpool Full Size Washer and Dryer



FLOOR 4-26



PLAN I

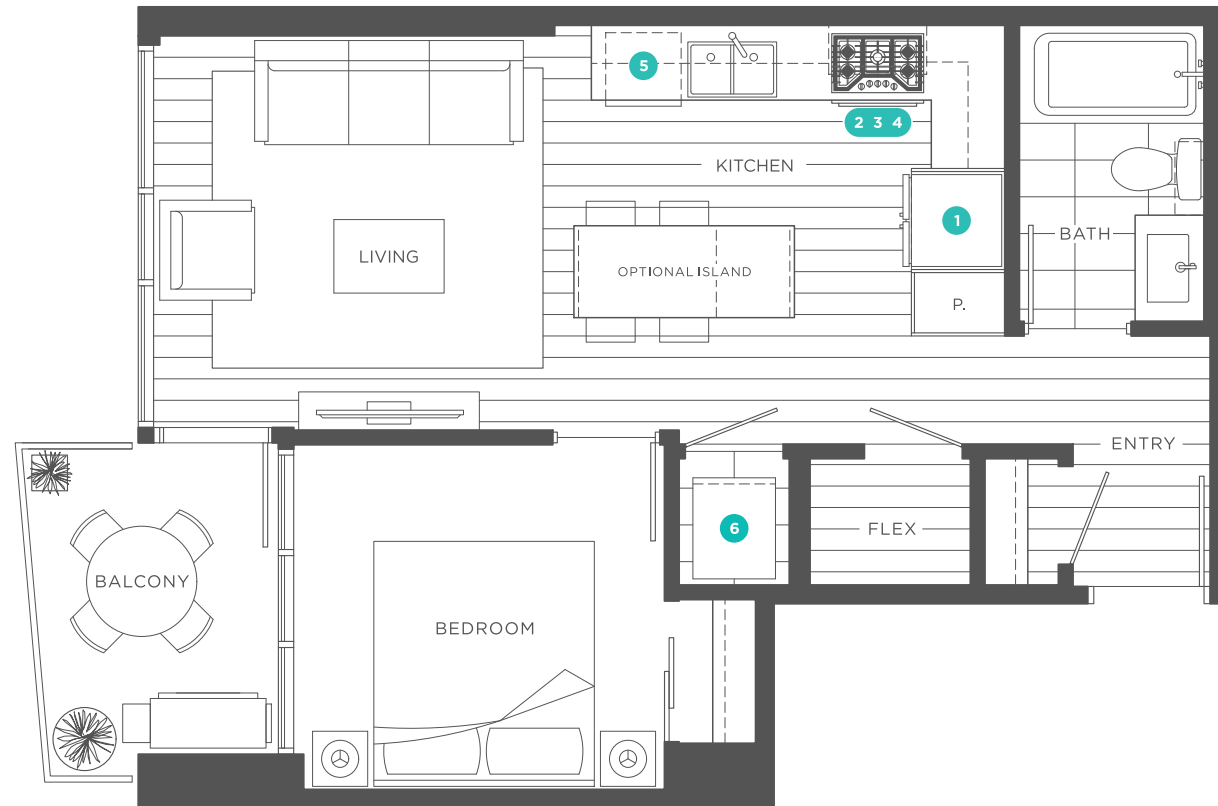
UNIT 409-2609

1 BEDROOM + FLEX

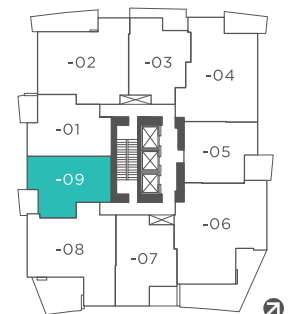
Interior 540 sq ft (approx)

Exterior 60 sq ft (approx)

Total 600 sq ft (approx)



- 1 30" KitchenAid Refrigerator
- 2 30" KitchenAid Gas Cooktop
- 3 30" KitchenAid Combination Hoodfan + Microwave
- 4 30" KitchenAid Convection Oven
- 5 24" KitchenAid Dishwasher
- 6 Whirlpool Full Size Washer and Dryer



FLOOR 4-26



PLAN I1

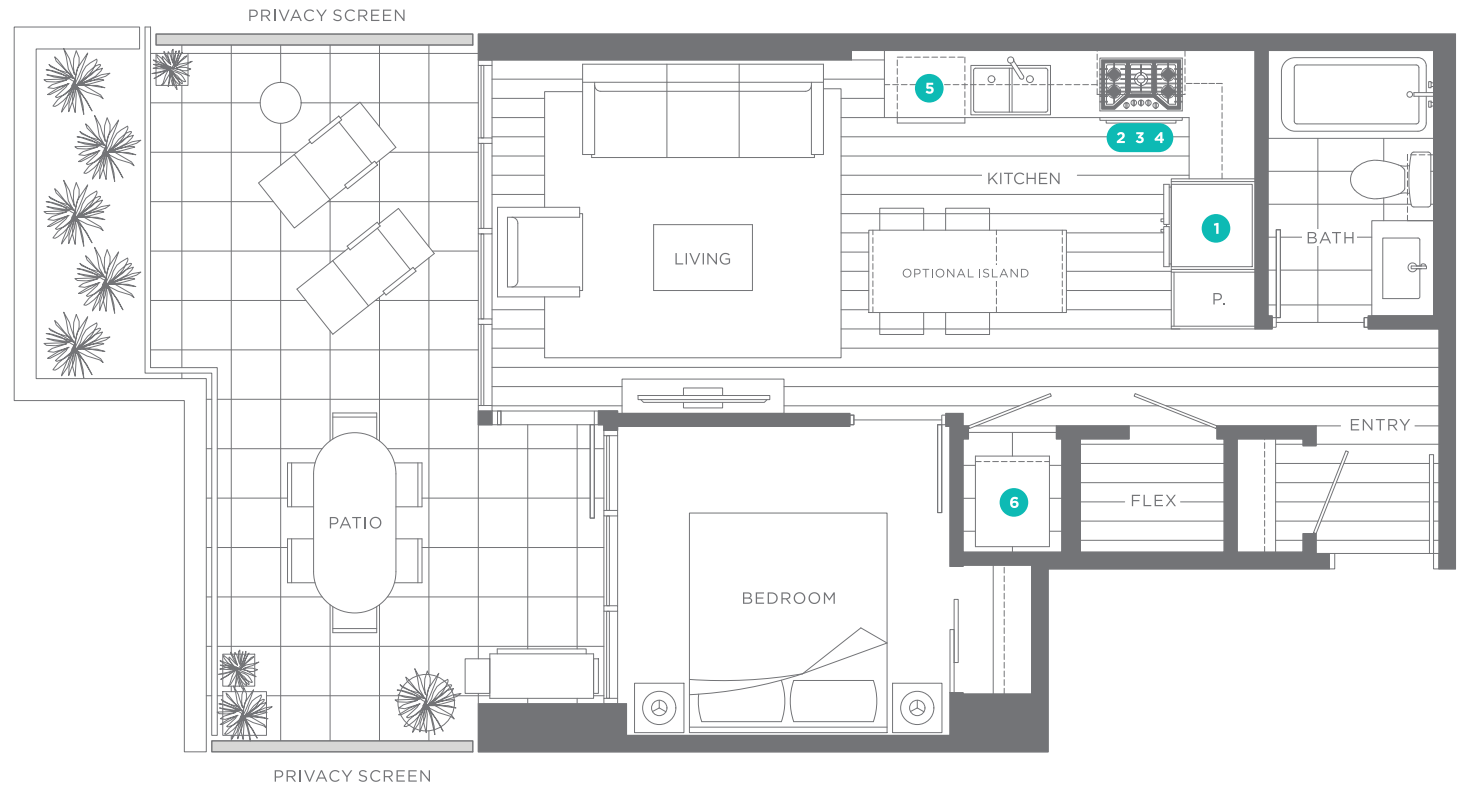
UNIT 307

1 BEDROOM + FLEX

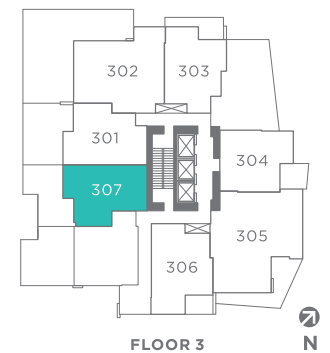
Interior 550 sq ft (approx)

Exterior 265 sq ft (approx)

Total 815 sq ft (approx)



- ① 30" KitchenAid Refrigerator
- ② 30" KitchenAid Gas Cooktop
- ③ 30" KitchenAid Combination Hoodfan + Microwave
- ④ 30" KitchenAid Convection Oven
- ⑤ 24" KitchenAid Dishwasher
- ⑥ Whirlpool Full Size Washer and Dryer



Dimensions, square footage and floor plans are approximate only. Final dimensions, square footage and floor plans may vary and will be determined by final strata plan measurements. Final floor plans may be mirror image of the floor plans shown above. The Developer reserves the right to make changes to the floor plans, project design, appliances, specifications, and features. E.&O.E.

PLAN K

UNIT 2701 & 2801

2 BEDROOM + FAMILY

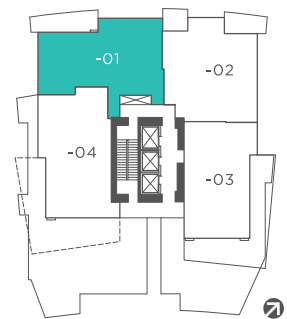
Interior 1,095 sq ft (approx)

Exterior 140-150 sq ft (approx)

Total 1,235-1,245 sq ft (approx)



- ❶ 36" KitchenAid Refrigerator
- ❷ 30" KitchenAid Gas Cooktop
- ❸ 30" KitchenAid Hoodfan
- ❹ 30" KitchenAid Convection Oven
- ❺ KitchenAid Microwave with Trim Kit
- ❻ 24" KitchenAid Dishwasher
- ❼ Whirlpool Full Size Washer and Dryer



FLOOR 27 & 28 **N**

PLAN L

UNIT 2702 & 2802

2 BEDROOM + DEN

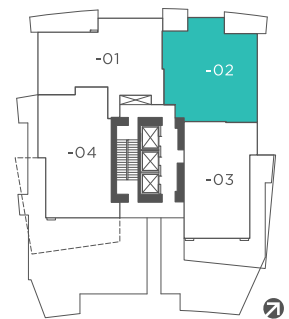
Interior 1,075 sq ft (approx)

Exterior 175 sq ft (approx)

Total 1,250 sq ft (approx)



- ❶ 36" KitchenAid Refrigerator
- ❷ 30" KitchenAid Gas Cooktop
- ❸ 30" KitchenAid Hoodfan
- ❹ 30" KitchenAid Convection Oven
- ❺ KitchenAid Microwave with Trim Kit
- ❻ 24" KitchenAid Dishwasher
- ❼ Whirlpool Full Size Washer and Dryer



FLOOR 27 & 28

PLAN M

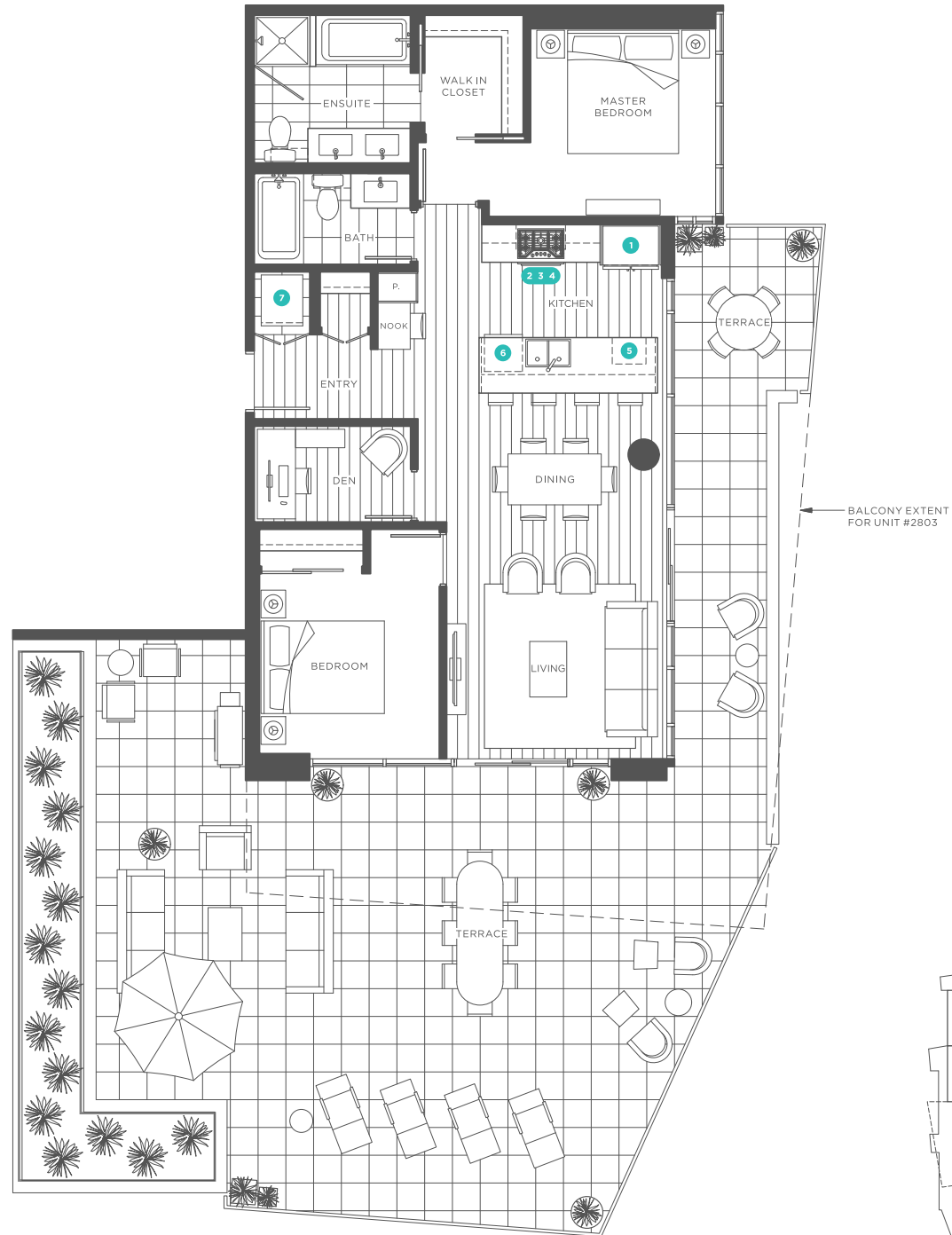
UNIT 2703 & 2803

2 BEDROOM + DEN

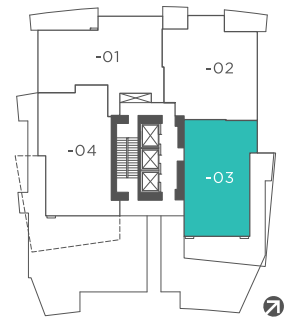
Interior 980 sq ft (approx)

Exterior 400-985 sq ft (approx)

Total 1,380-1,965 sq ft (approx)



- 1 36" KitchenAid Refrigerator
- 2 30" KitchenAid Gas Cooktop
- 3 30" KitchenAid Hoodfan
- 4 30" KitchenAid Convection Oven
- 5 KitchenAid Microwave with Trim Kit
- 6 24" KitchenAid Dishwasher
- 7 Whirlpool Full Size Washer and Dryer



PLAN N

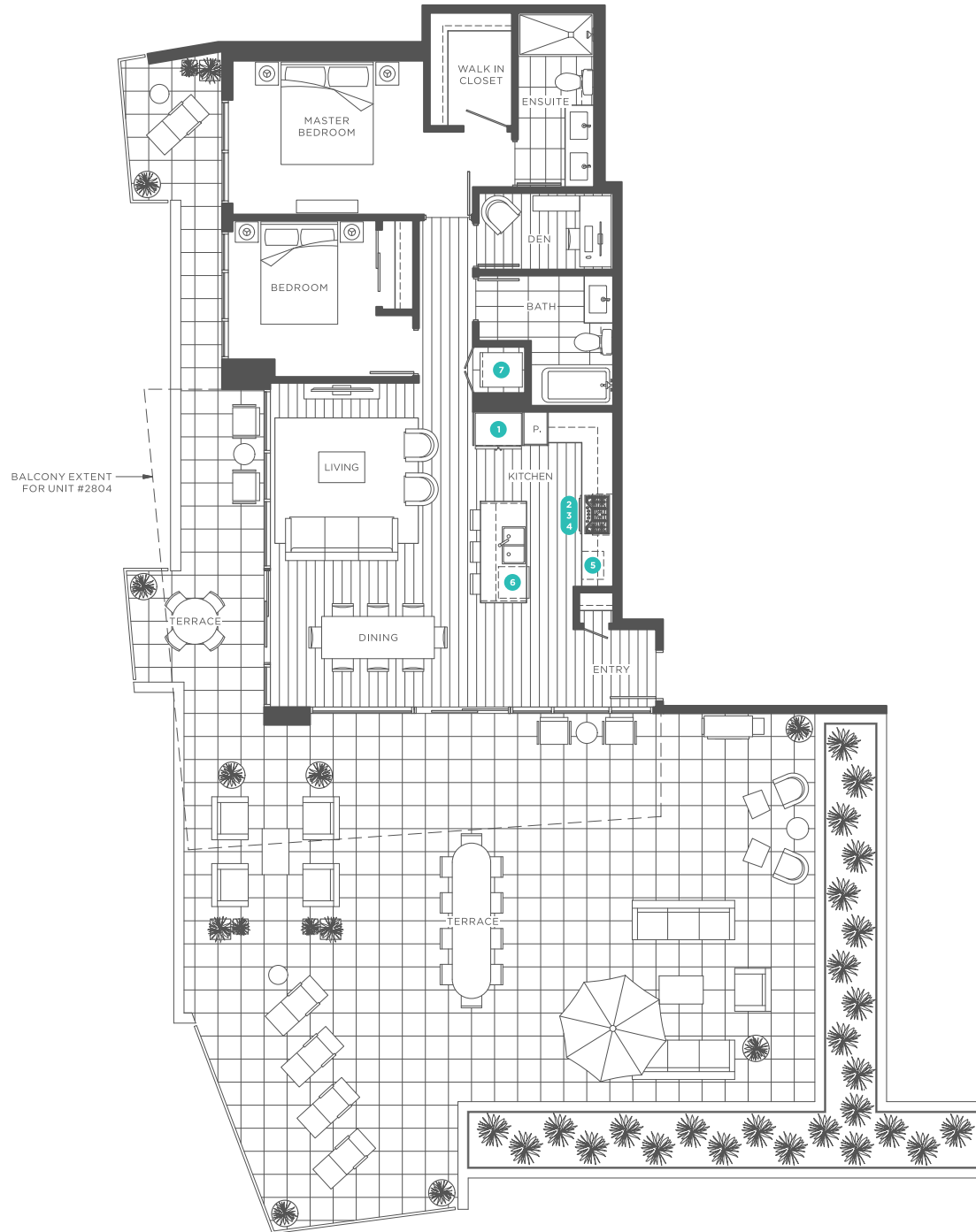
UNIT 2704 & 2804

2 BEDROOM + DEN

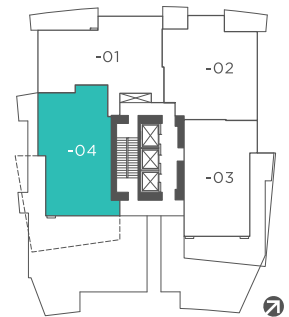
Interior 1,105 sq ft (approx)

Exterior 385-1,360 sq ft (approx)

Total 1,490-2,465 sq ft (approx)



- 1 36" KitchenAid Refrigerator
- 2 30" KitchenAid Gas Cooktop
- 3 30" KitchenAid Hoodfan
- 4 30" KitchenAid Convection Oven
- 5 KitchenAid Microwave with Trim Kit
- 6 24" KitchenAid Dishwasher
- 7 Whirlpool Full Size Washer and Dryer



FLOOR 27 & 28



PLAN TH

UNITS TH1-TH3

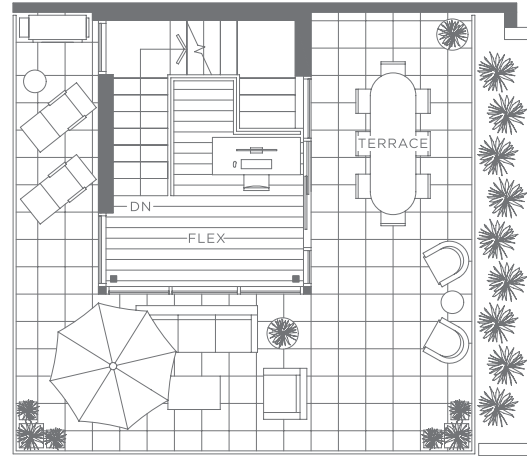
2 BEDROOM + FLEX

Interior 1,385-2,310 sq ft (approx)

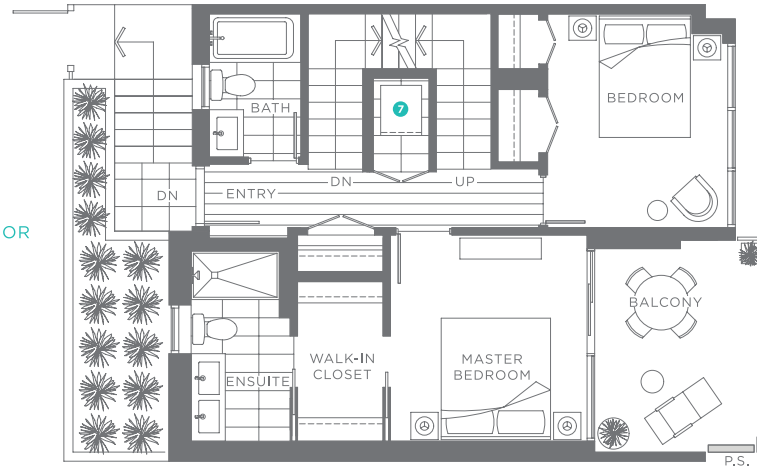
Exterior 875-900sq ft (approx)

Total 2,270-2,310 sq ft (approx)

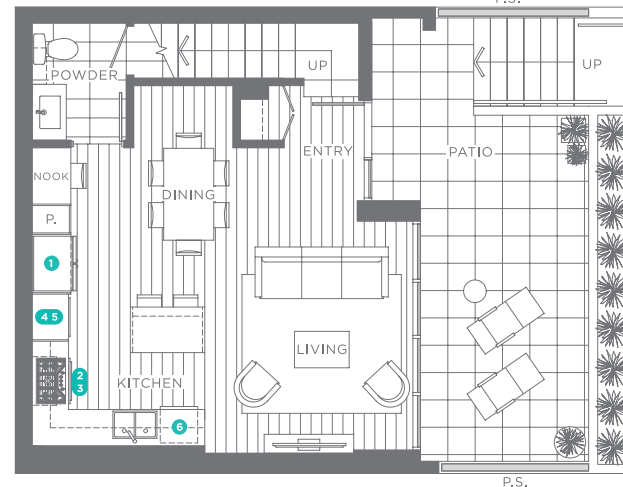
ROOF DECK



2ND FLOOR

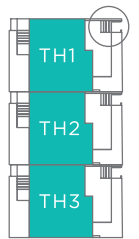


MAIN FLOOR



- 1 36" KitchenAid Refrigerator
- 2 30" KitchenAid Gas Cooktop
- 3 30" KitchenAid Hoodfan
- 4 30" KitchenAid Convection Oven
- 5 KitchenAid Microwave with Trim Kit
- 6 24" KitchenAid Dishwasher
- 7 Whirlpool Full Size Washer and Dryer

NO STAIRS FOR TH1



TOWNHOME N

Dimensions, square footage and floor plans are approximate only. Final dimensions, square footage and floor plans may vary and will be determined by final strata plan measurements. Final floor plans may be mirror image of the floor plans shown above. The Developer reserves the right to make changes to the floor plans, project design, appliances, specifications, and features. E.&O.E.