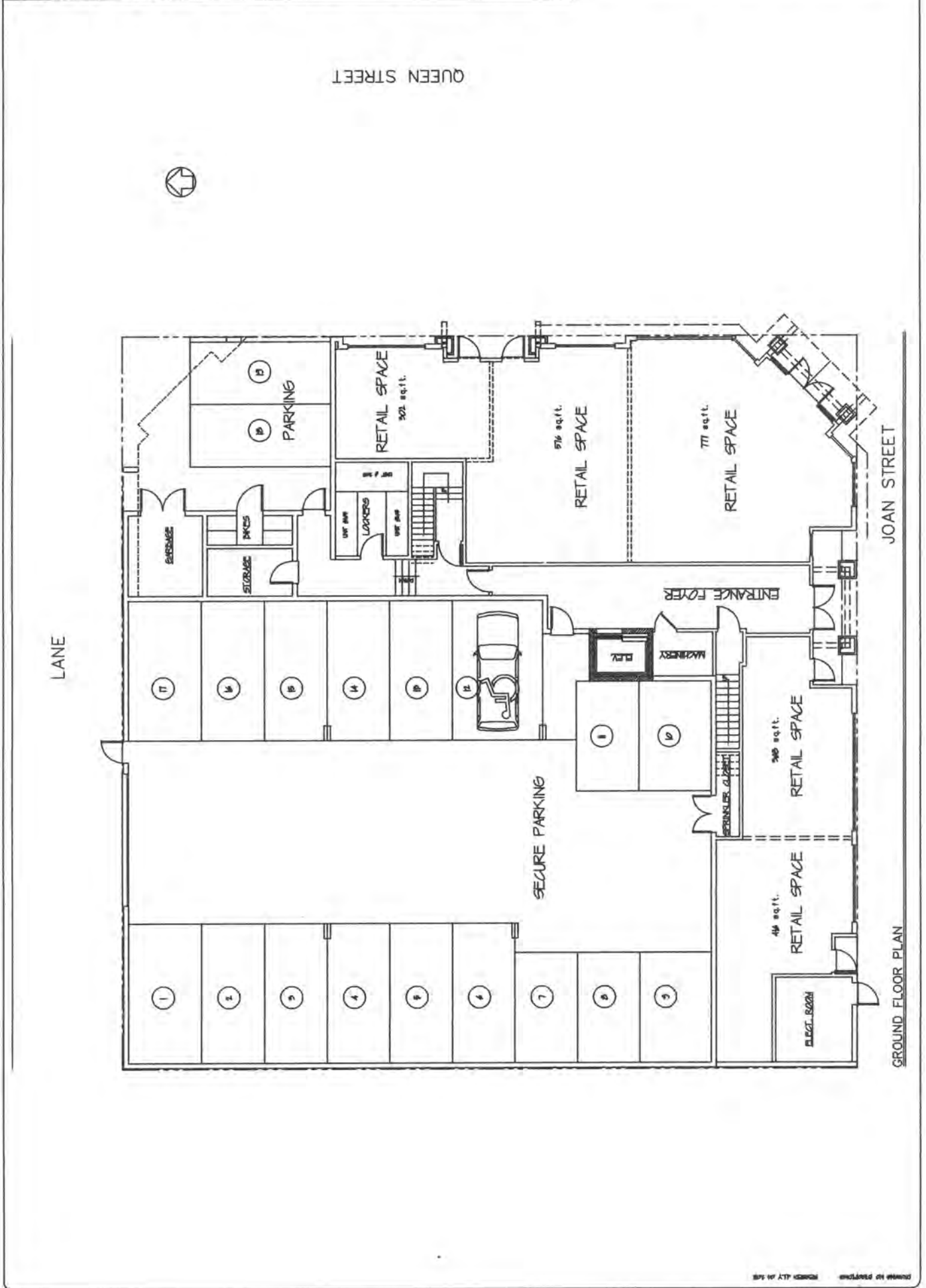


DATE: JULY 2015	SCALE: 3/8" = 1'-0"	BY: G.T. BURROUGHS ARCHT. P.C.
PLAN NO.:		
SHEET NO.:	B7001	4 OF 8

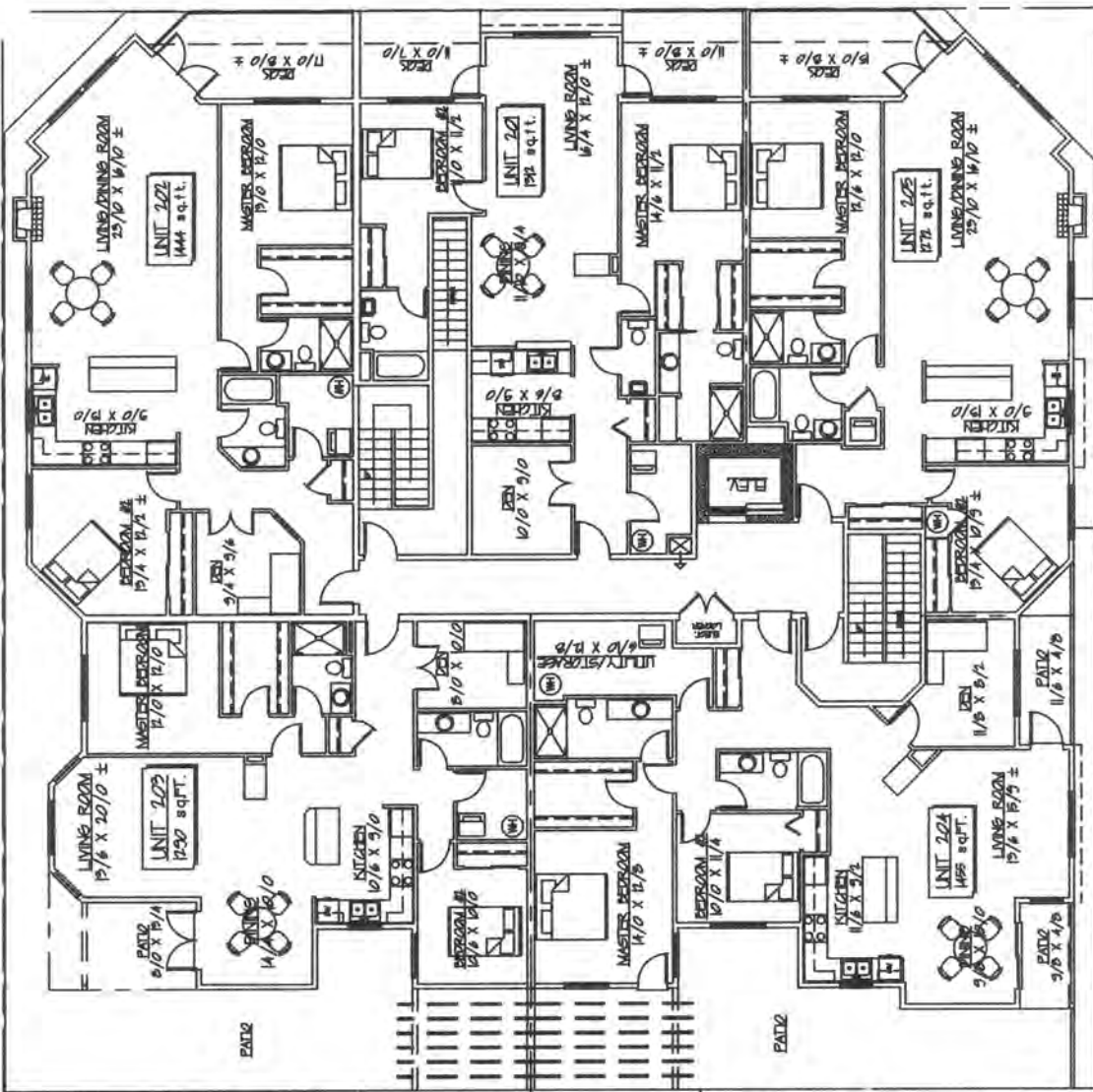
PROPOSED 15 UNIT APARTMENT & MIXED USE DEVELOPMENT  
 THE MEWS OVER OSBORNE BAY  
 G.T. BURROUGHS DESIGN  
 4000 WEST 10TH AVENUE, SUITE 100, DENVER, CO 80202  
 TEL: 303.733.1111 FAX: 303.733.1112



GROUND FLOOR PLAN

COPYRIGHT: THESE PLANS MAY NOT BE COPIED IN ANY FORM WITHOUT THE WRITTEN PERMISSION OF C. T. BURDGE DESIGNS

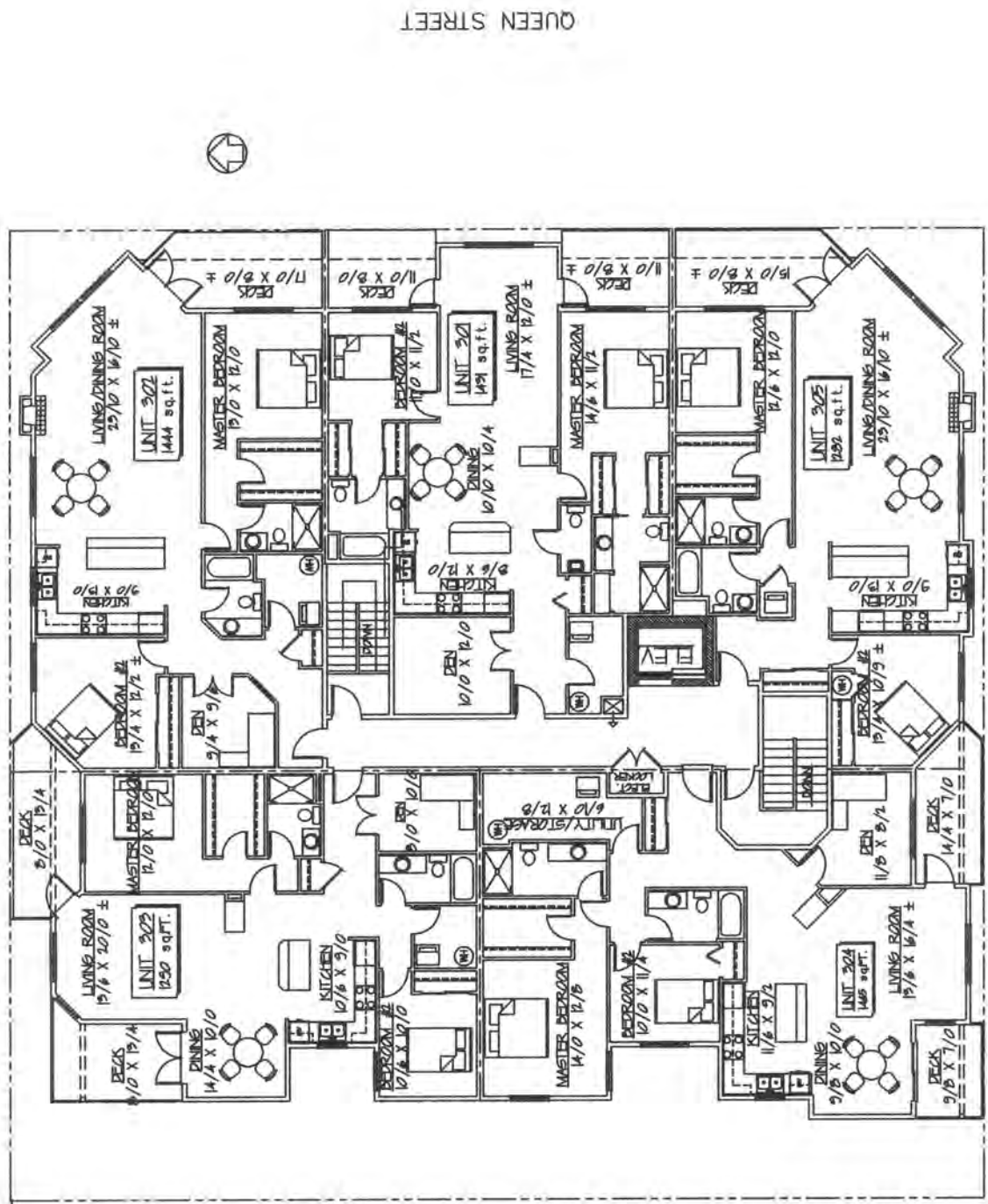
QUEEN STREET



JOAN STREET

SECOND FLOOR PLAN

PROPOSED 15 UNIT APARTMENT & MIXED USE DEVELOPMENT  
 COPYRIGHT: THESE PLANS MAY NOT BE COPIED IN ANY FORM  
 WITHOUT THE WRITTEN PERMISSION OF G.T. SURRIDGE DESIGN

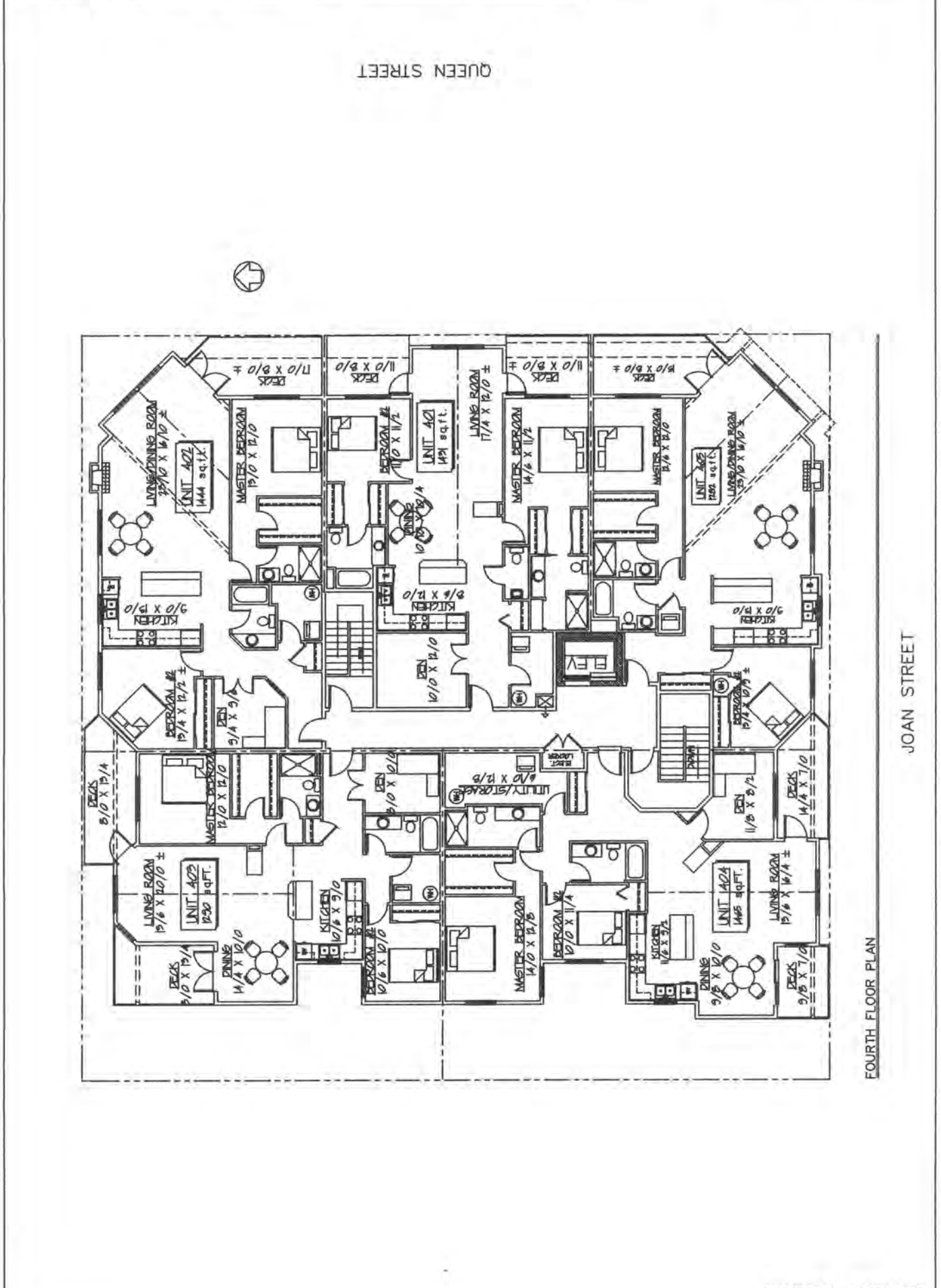


THIRD FLOOR PLAN

JOAN STREET

QUEEN STREET

PROPOSED 15 UNIT APARTMENT & MIXED USE DEVELOPMENT  
 WITHOUT THE WRITTEN PERMISSION OF G.T. BURROUGHS ARCHITECT



FOURTH FLOOR PLAN

JOAN STREET

QUEEN STREET