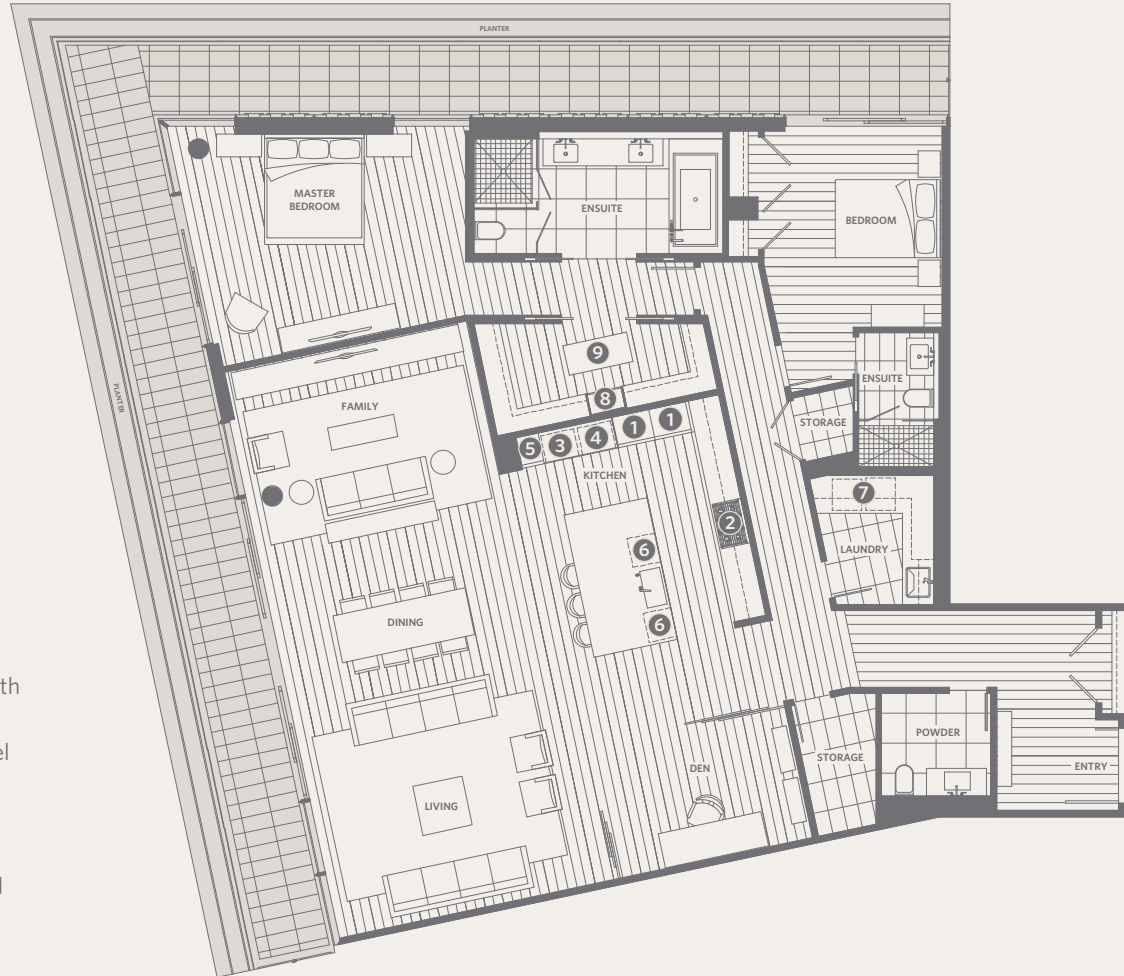


RESIDENCE 209
 2 BEDROOMS + 2 BATHROOMS + POWDER ROOM + DEN + FAMILY

GROSVENOR
 AMBLESIDE

2,580 *sf* Living
 620 *sf* Outdoor Living



- ❶ Sub-Zero 30" integrated refrigerator with two freezer drawers
- ❷ WOLF 36" gas cooktop & stainless steel hood fan
- ❸ WOLF 30" microwave, convection wall oven & warming drawer
- ❹ WOLF 30" steam oven, convection wall oven & warming drawer
- ❺ Sub-Zero 18" integrated wine fridge
- ❻ Miele 24" integrated dishwasher
- ❼ Miele 24" ultra-high efficiency washer & dryer
- ❽ Custom shoe closet
- ❾ Custom walk-in closet

