



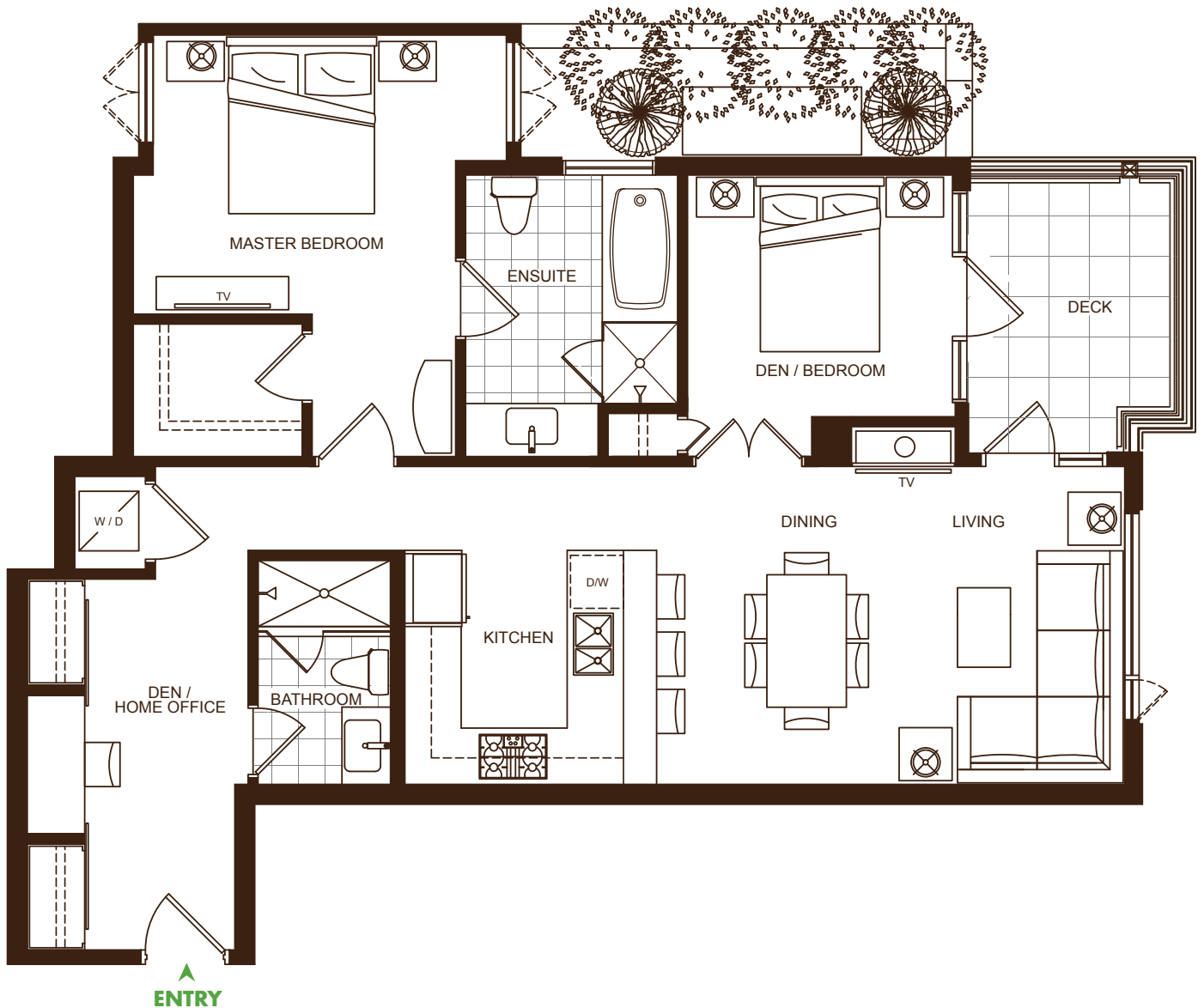
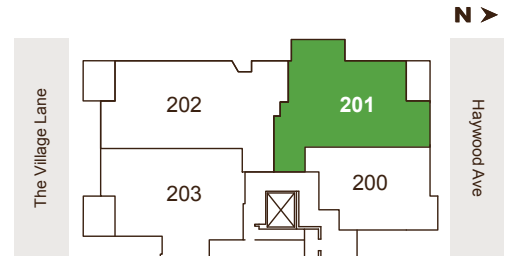
HAYWOOD

VILLAGE LIFE IN DUNDARAVE

SUITE 201

2 BEDROOM + DEN/HOME OFFICE

Approximately 1027 sq. ft.



The Developer reserves the right to make modification and/or substitutions without notice should they be necessary. All square footages, dimensions, specifications and layouts are approximate and should not be relied upon. Suite areas are based on architectural drawings. Please see your Sales Consultant for complete details. E. & O.E.



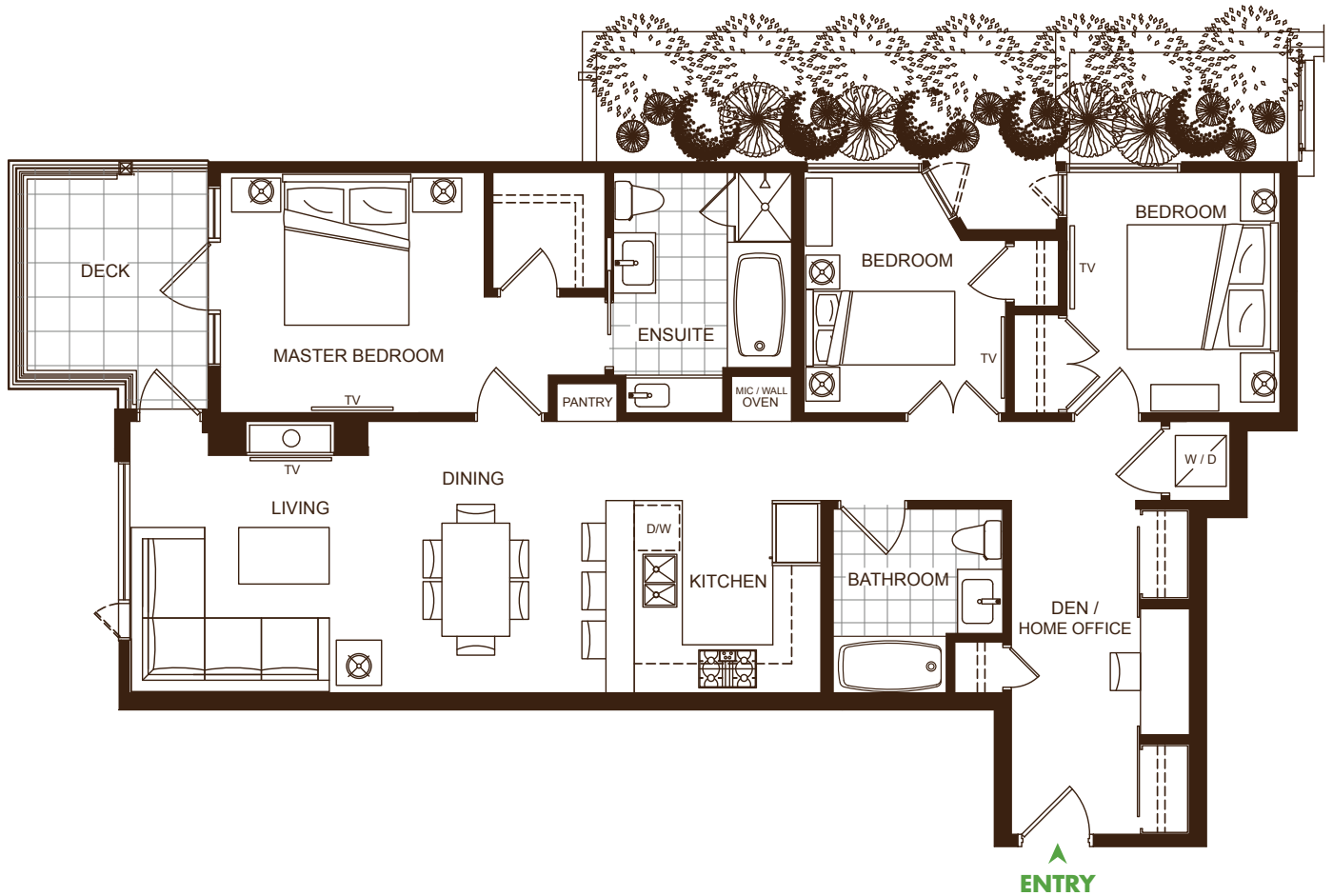
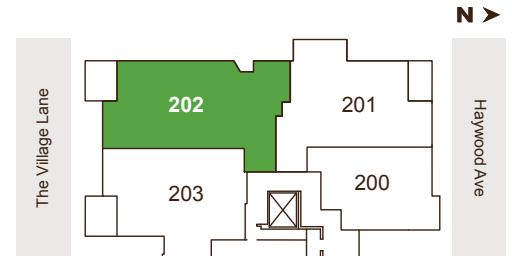
HAYWOOD

VILLAGE LIFE IN DUNDARAVE

SUITE 202

3 BEDROOM + DEN/HOME OFFICE

Approximately 1188 sq. ft.



The Developer reserves the right to make modification and/or substitutions without notice should they be necessary. All square footages, dimensions, specifications and layouts are approximate and should not be relied upon. Suite areas are based on architectural drawings. Please see your Sales Consultant for complete details. E. & O.E.



HAYWOOD

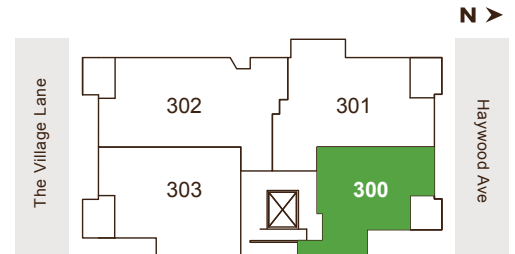
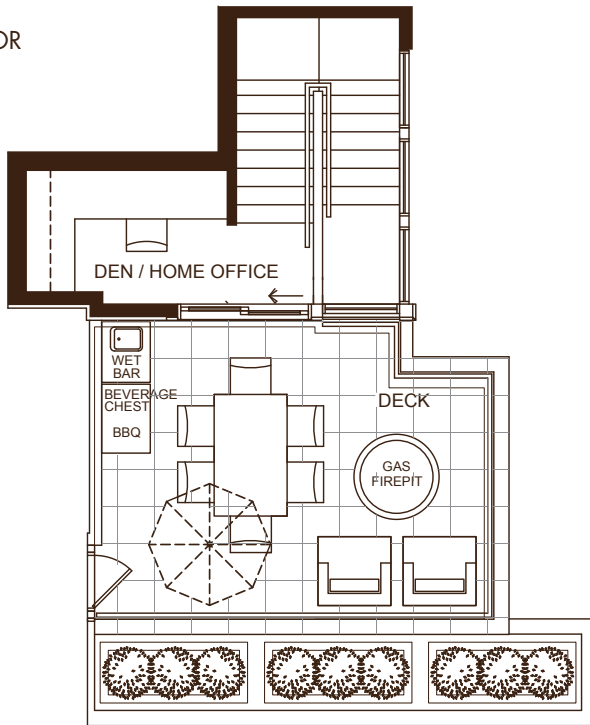
VILLAGE LIFE IN DUNDARAVE

PENTHOUSE 300

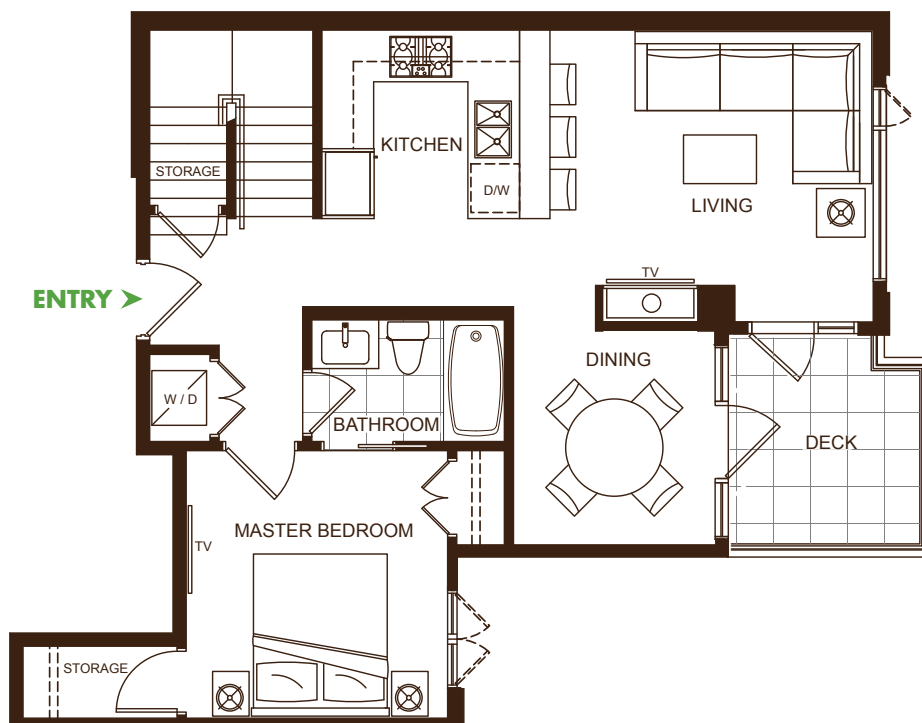
1 BEDROOM + DEN/HOME OFFICE

Approximately 860 sq. ft.

UPPER FLOOR



LOWER FLOOR



The Developer reserves the right to make modification and/or substitutions without notice should they be necessary. All square footages, dimensions, specifications and layouts are approximate and should not be relied upon. Suite areas are based on architectural drawings. Please see your Sales Consultant for complete details. E. & O.E.



HAYWOOD

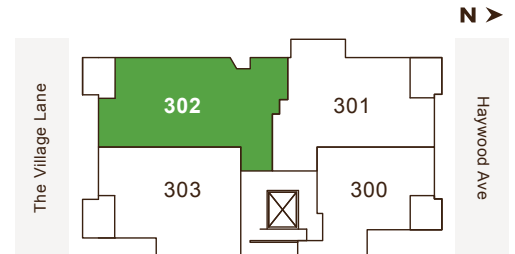
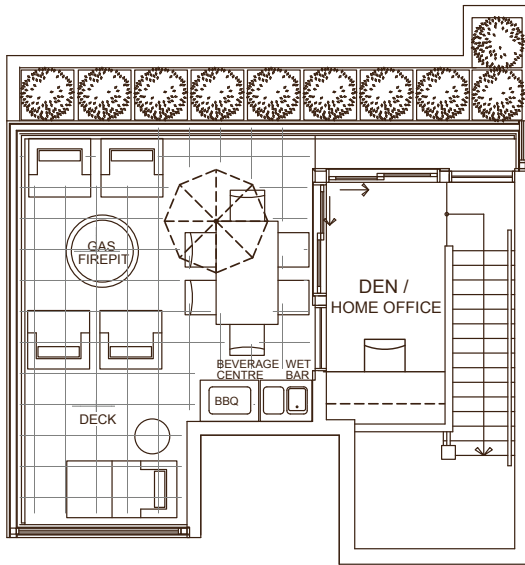
VILLAGE LIFE IN DUNDARAVE

PENTHOUSE 302

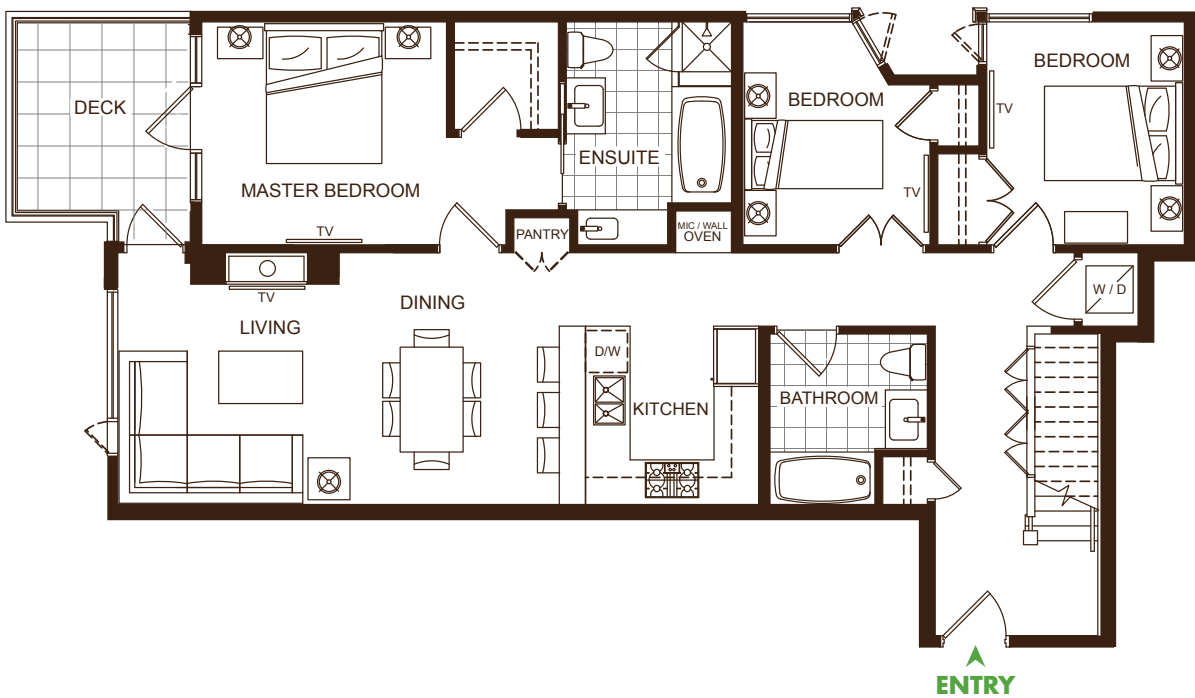
3 BEDROOM + DEN/HOME OFFICE

Approximately 1317 sq. ft.

UPPER FLOOR



LOWER FLOOR



The Developer reserves the right to make modification and/or substitutions without notice should they be necessary. All square footages, dimensions, specifications and layouts are approximate and should not be relied upon. Suite areas are based on architectural drawings. Please see your Sales Consultant for complete details. E. & O.E.



HAYWOOD

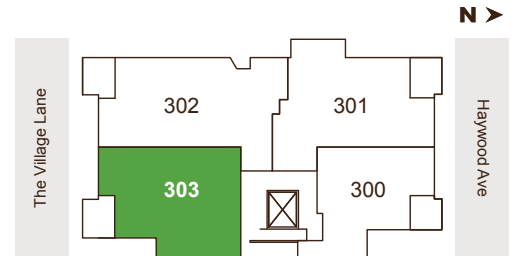
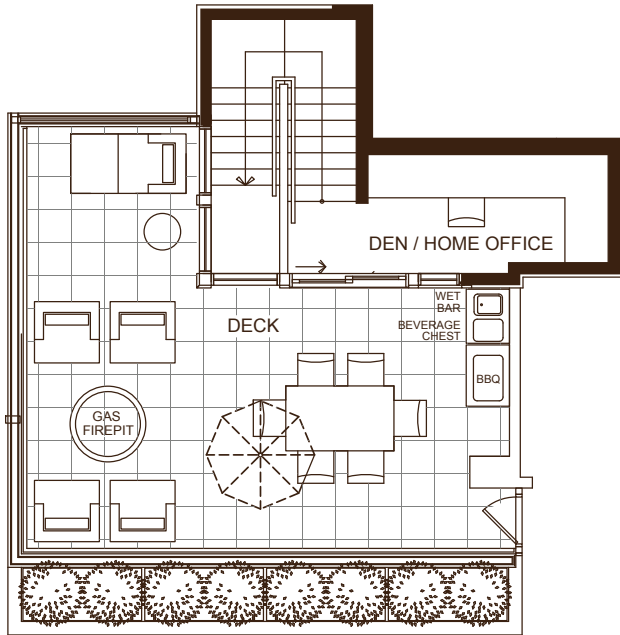
VILLAGE LIFE IN DUNDARAVE

PENTHOUSE 303

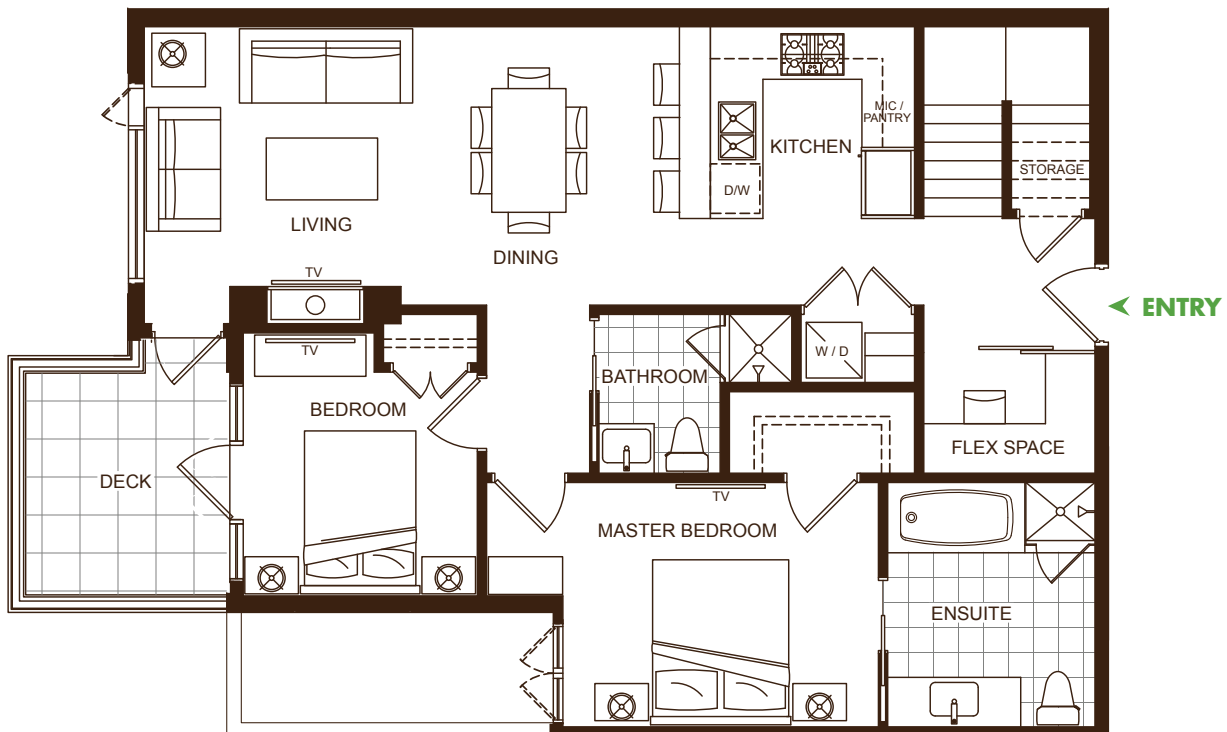
2 BEDROOM, DEN/HOME OFFICE + FLEX SPACE

Approximately 1175 sq. ft.

UPPER FLOOR



LOWER FLOOR



The Developer reserves the right to make modification and/or substitutions without notice should they be necessary. All square footages, dimensions, specifications and layouts are approximate and should not be relied upon. Suite areas are based on architectural drawings. Please see your Sales Consultant for complete details. E. & O.E.