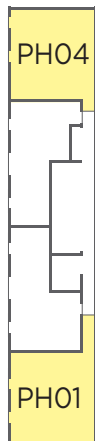
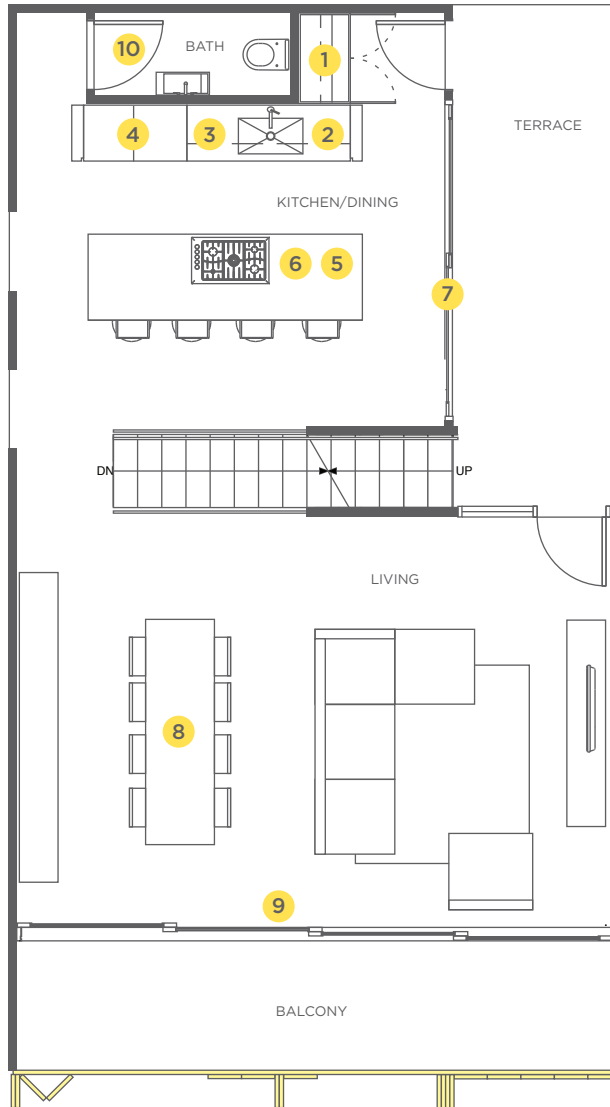


PENTHOUSE (UPPER)

2 BEDROOM + TERRACE, 1374-1422 SF LIVING



Georgia E. St.

Floor 10

- 1 Entry Coat Closet and Shoe Shelves
- 2 Undermount, Stainless Steel, Square Radius Sink and Blanco Spray Faucet
- 3 Integrated Double Fisher & Paykel Dishwasher Drawer
- 4 Two Integrated Blomberg Fridge/Freezer with Double Drawers
- 5 30" Integrated Fisher & Paykel Built-In Oven
- 6 36" Fisher & Paykel Gas Cooktop
- 7 Oversized, Full Height Aluminum Sliding Doors to Outdoor Terrace
- 8 Castore Suspension Dining Room Chandelier
- 9 Oversized, Full Height Aluminum Sliding Doors and Folding Exterior Shutters to Balcony
- 10 Riobel Bathroom Fixtures and Custom Vanity with Integrated Sink and Wall Hung Toilet

THE
FLATS
219 GEORGIA EAST

[T] 604.790.8744

[F] 604.681.1292

343 RAILWAY STREET
4TH FLOOR
VANCOUVER, BC
V6A 1A4

info@theflatsongorgia.com

theflatsongorgia.com

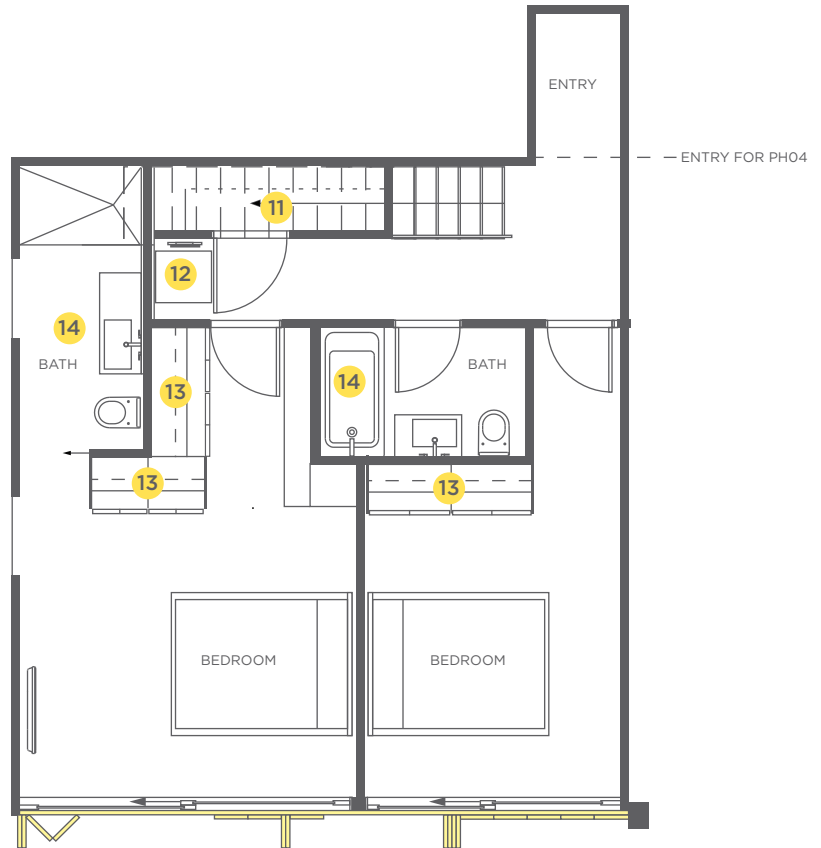
Floorplans and measurements are representational and are not accurate.
Window placement varies throughout building - please refer to architectural plans.
Marketing & Sales by Colliers International Residential Marketing. E.&O.E.



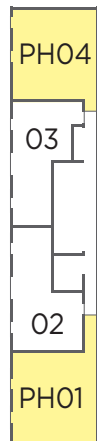
THE
FLATS
219 GEORGIA EAST

PENTHOUSE (LOWER)

2 BEDROOM + TERRACE, 1374-1422 SF LIVING



- 11 Storage and Coat Closet with Shoe Shelving
- 12 Stacked Blomberg Washer Dryer
- 13 Custom Bedroom Wardrobes, with Full Height Doors and Touch Latch Opening
- 14 Riobel Bathroom Fixtures and Custom Vanity with Integrated Sink, Deep Soaker Tub and Wall Hung Toilets



Georgia E. St.

Floor 9

[T] 604.790.8744

[F] 604.681.1292

343 RAILWAY STREET
4TH FLOOR
VANCOUVER, BC
V6A 1A4

info@theflatsongorgia.com

theflatsongorgia.com

Floorplans and measurements are representational and are not accurate.
Window placement varies throughout building - please refer to architectural plans.
Marketing & Sales by Colliers International Residential Marketing. E.&O.E.