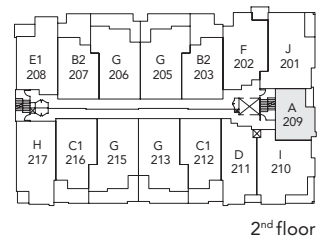
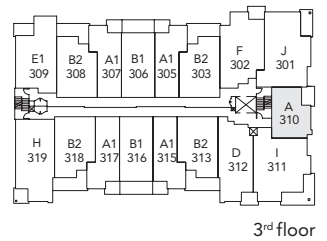
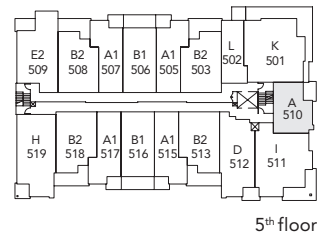
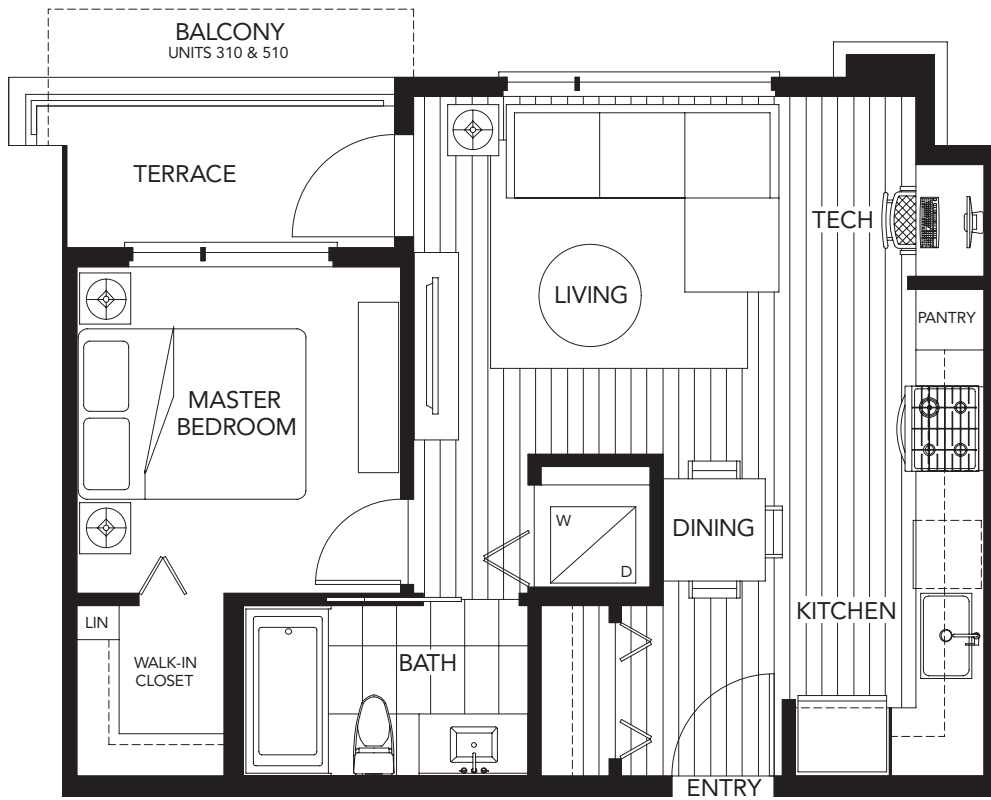
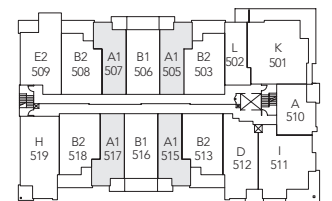
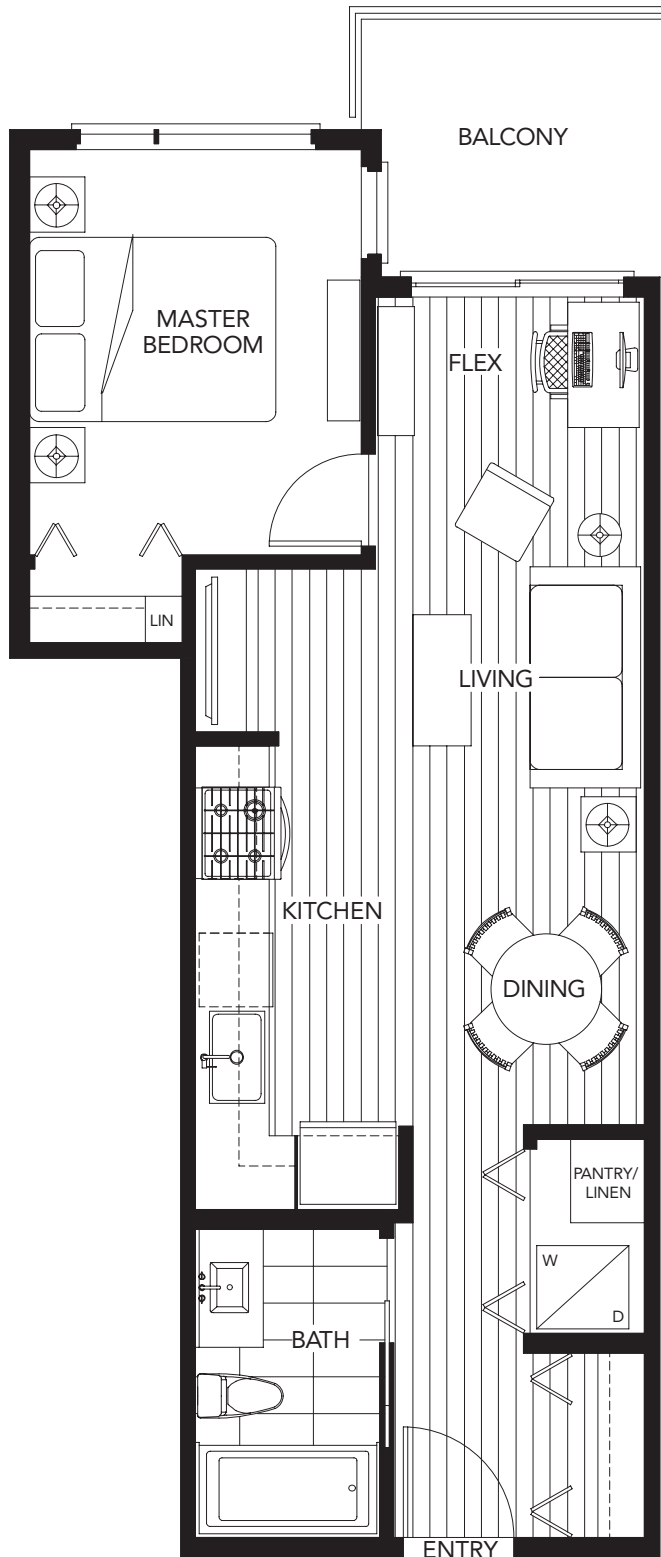


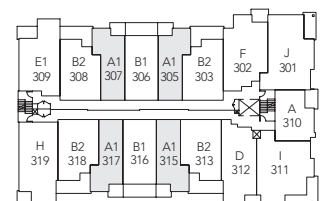
a

1 bedroom + tech nook
530 sq. ft.





5th floor

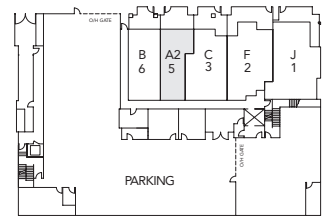
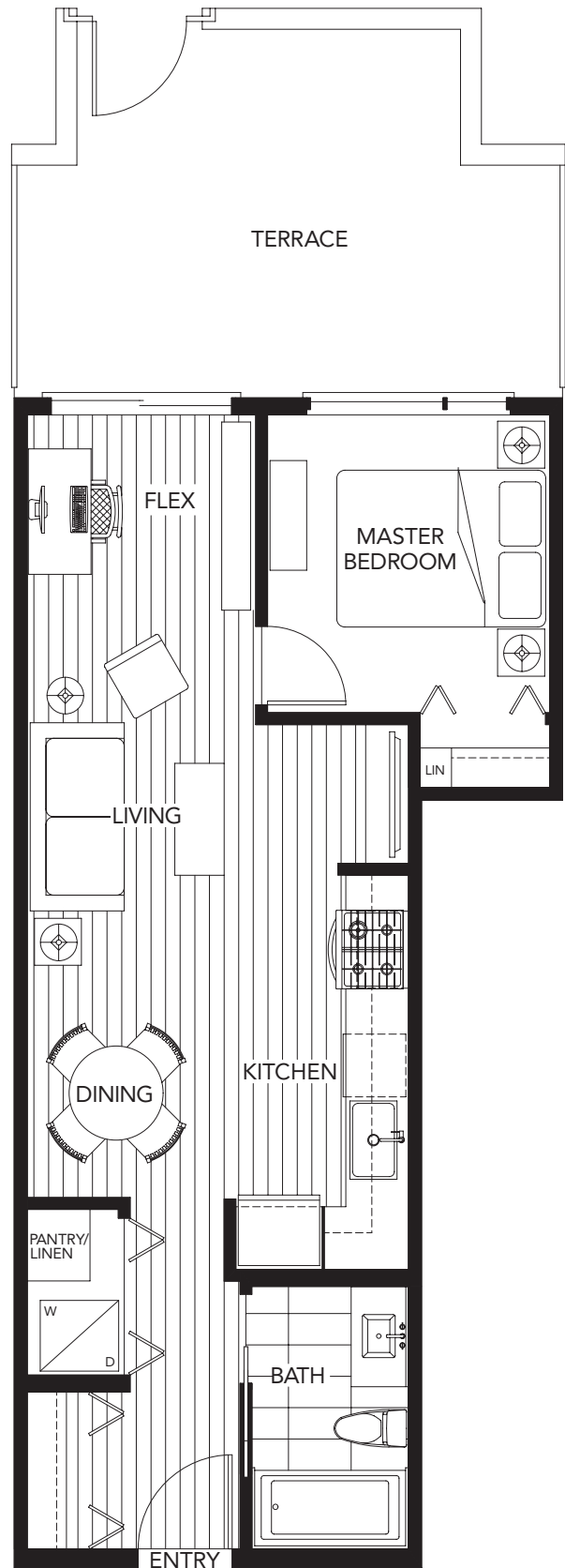


3rd floor



a2

1 bedroom + flex
543 sq. ft.



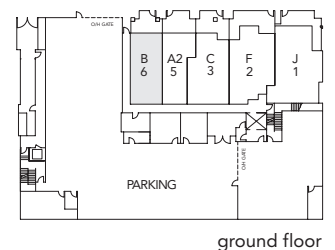
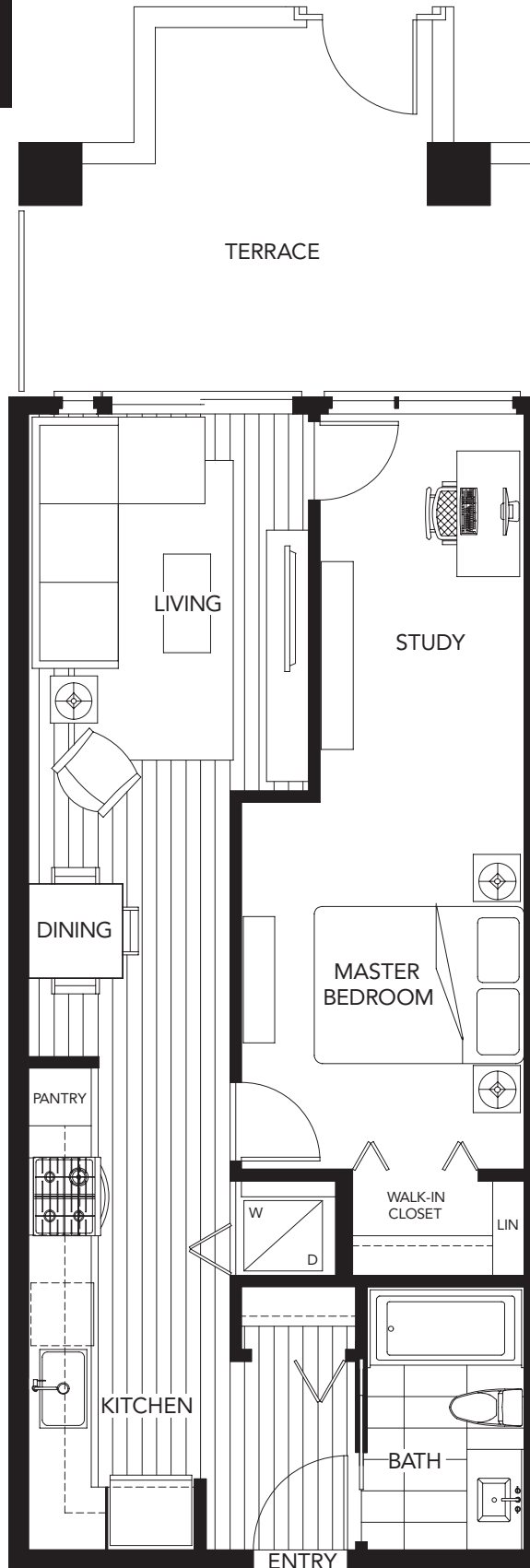
ground floor



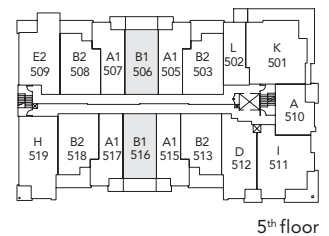
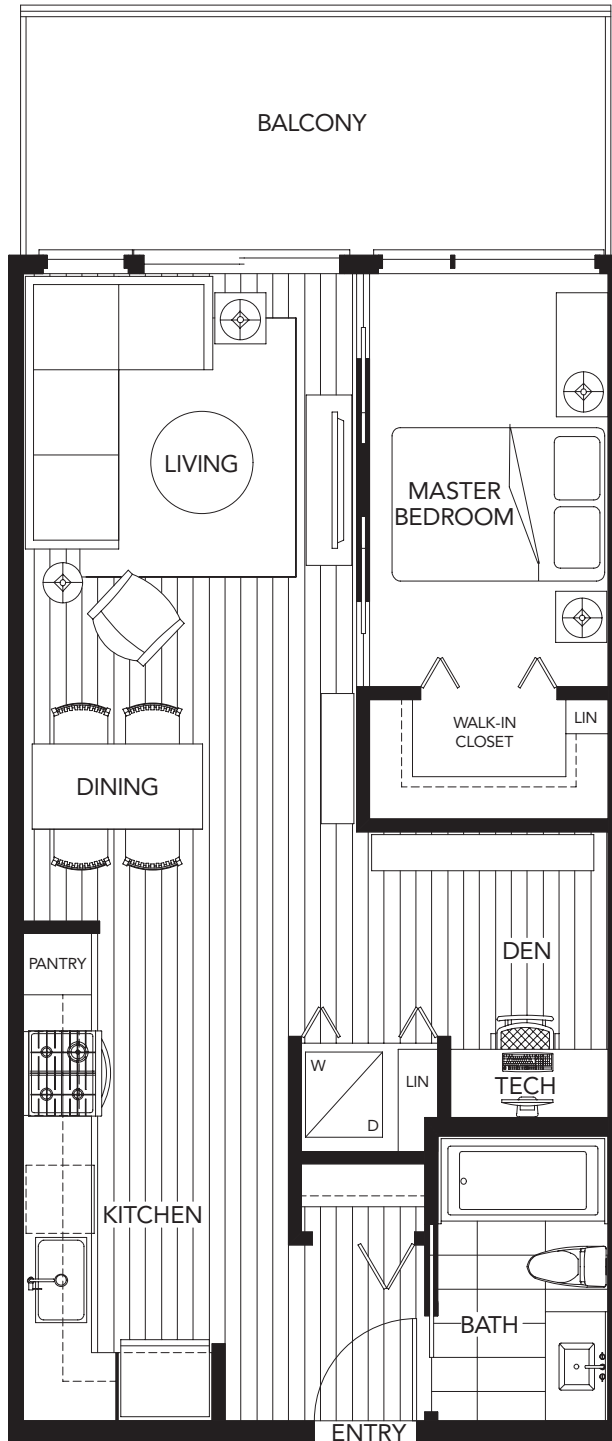
The material provided herein is for general informational purposes only and is not intended to depict as-built post-construction designs. The Developer reserves the right in its discretion to make changes to the floor plans, project designs, specifications, features and dimensions. Square footages are approximate and have been calculated from preliminary strata plan drawings. Actual final dimensions following completion of construction may vary from those set out herein. E.&O.E.

b

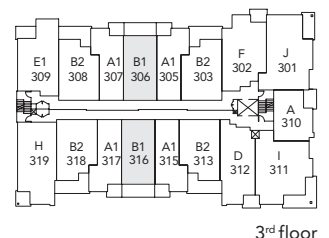
1 bedroom + study
628 sq. ft.



N →

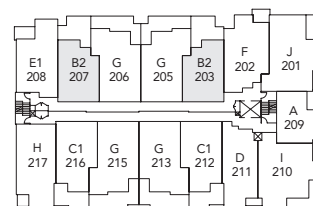
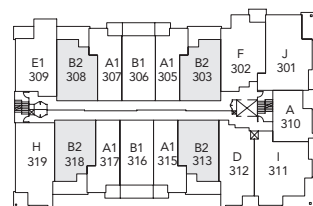
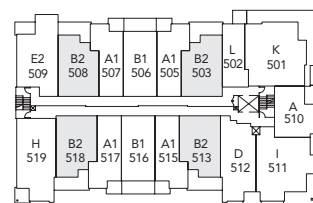
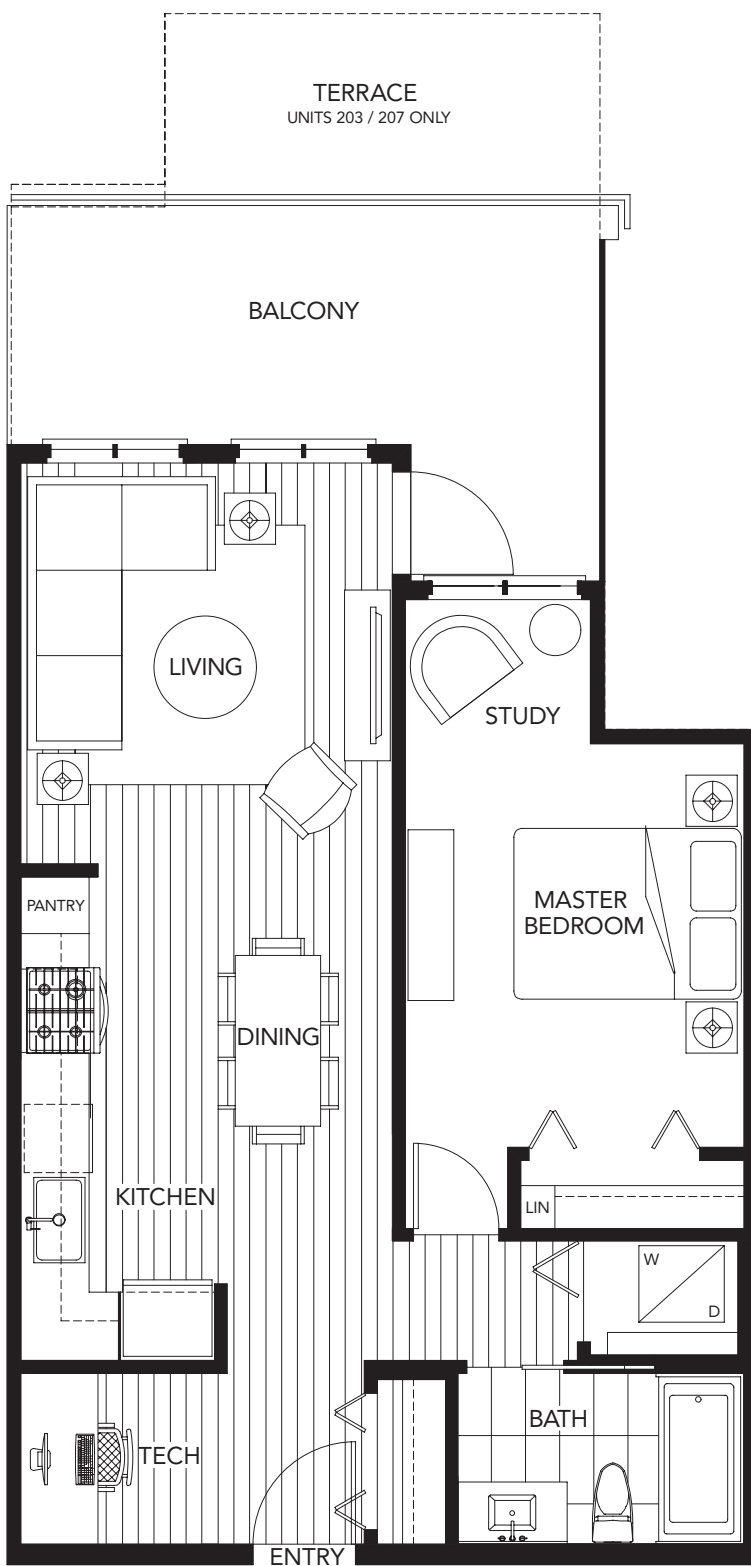


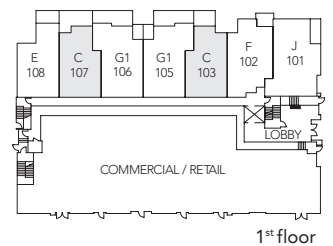
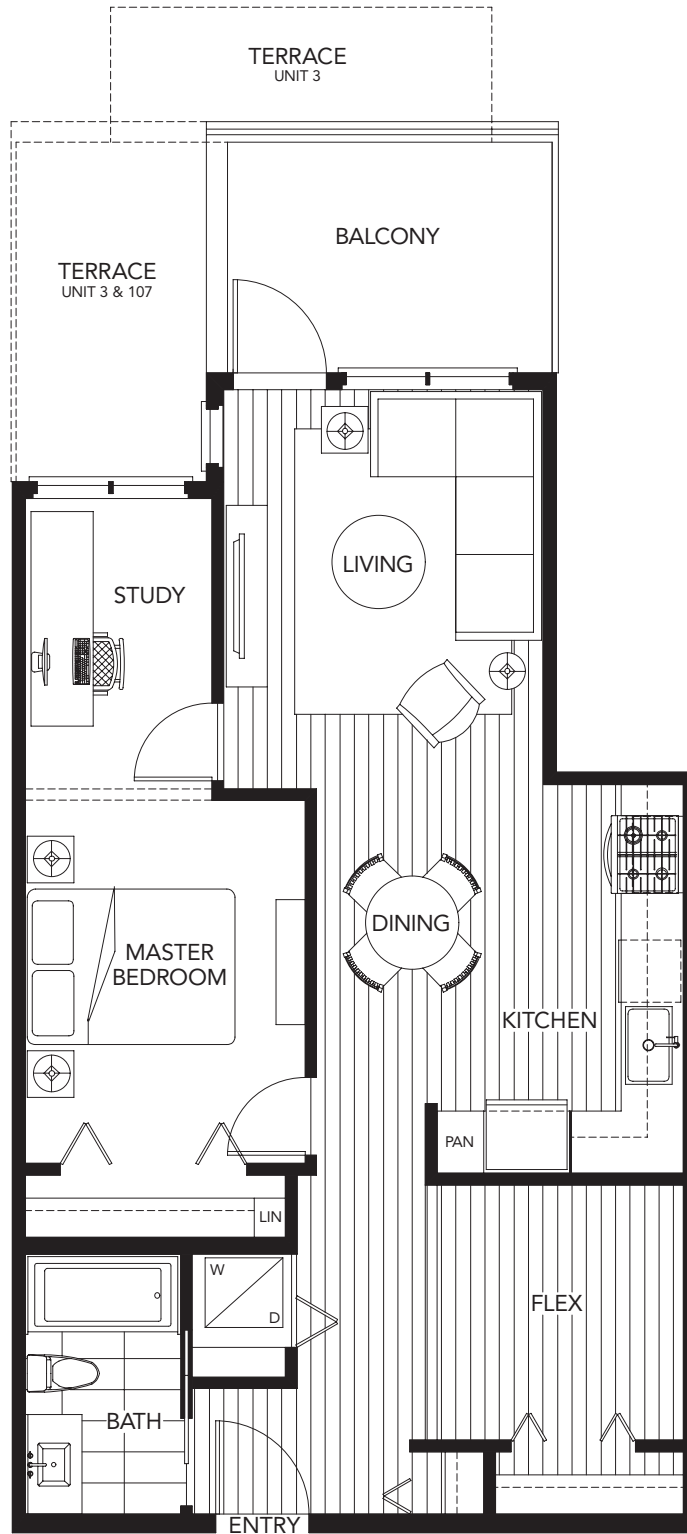
5th floor



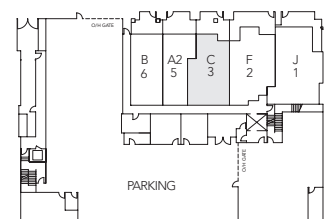
3rd floor





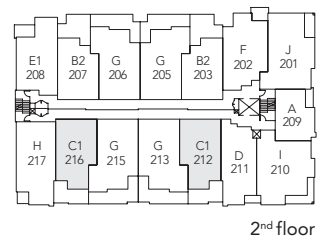
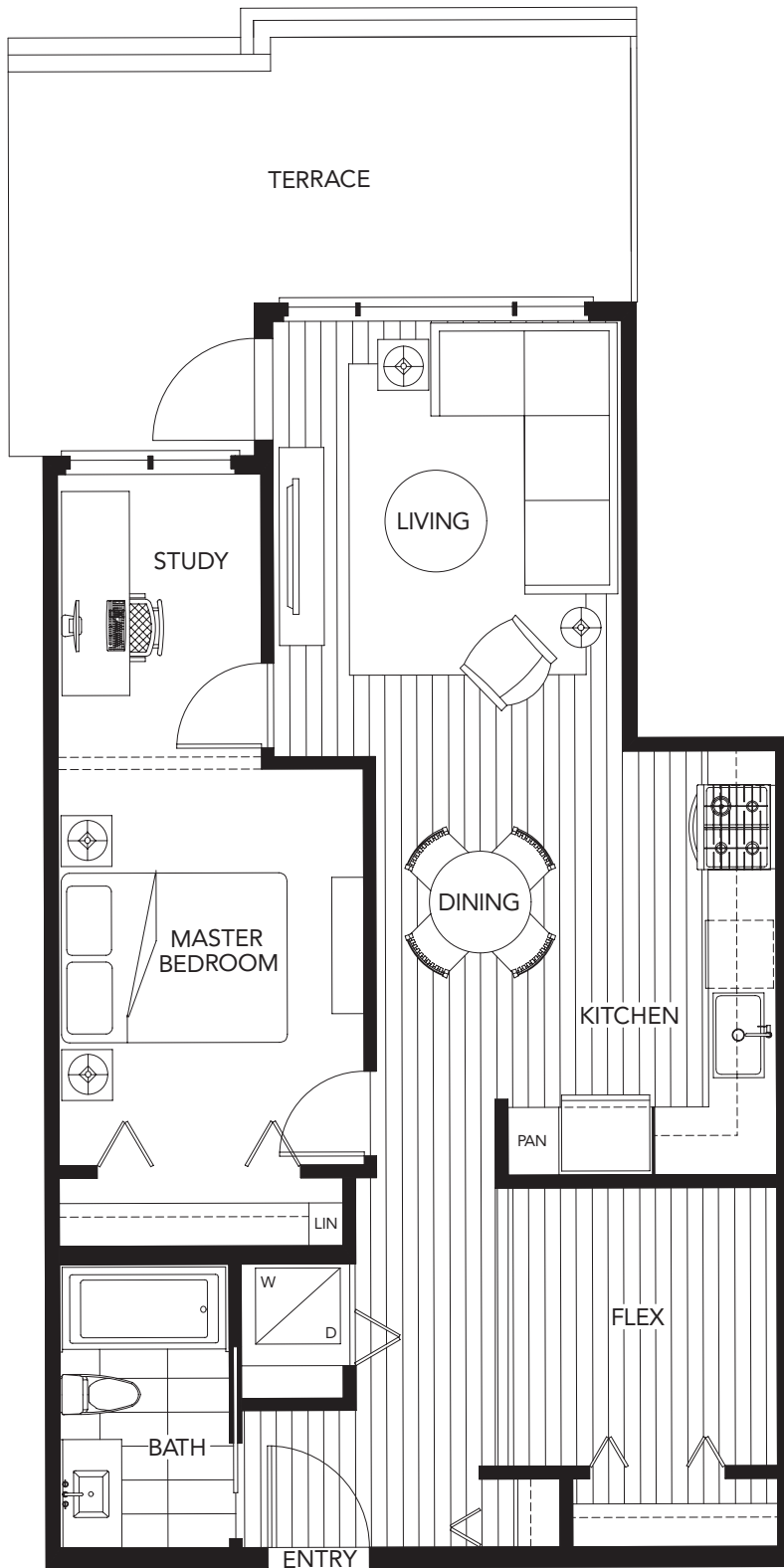


1st floor

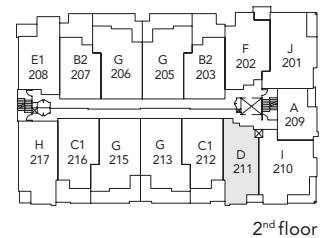
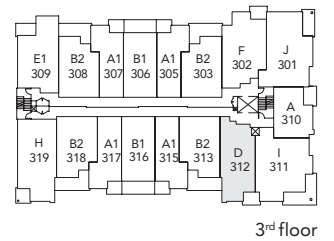
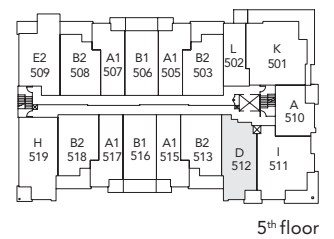
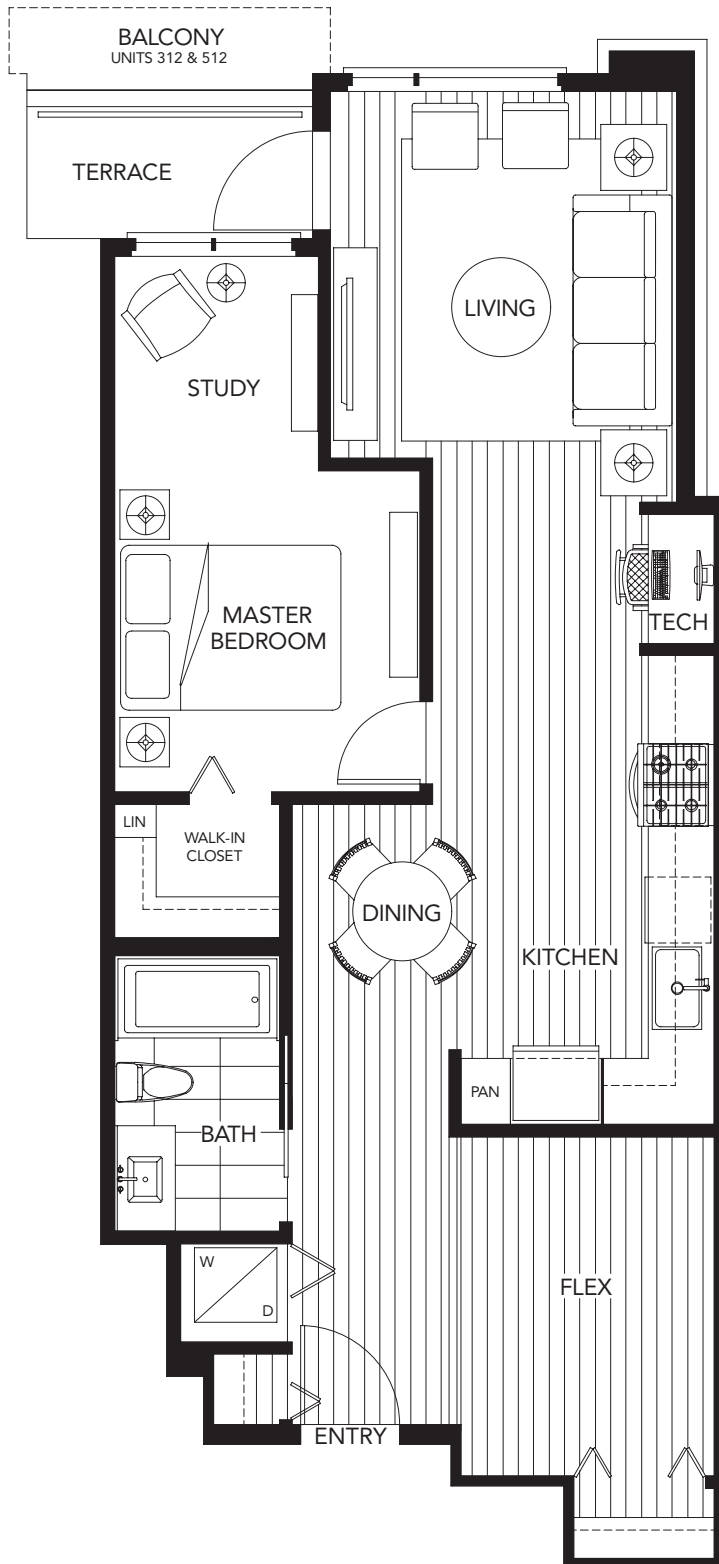


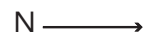
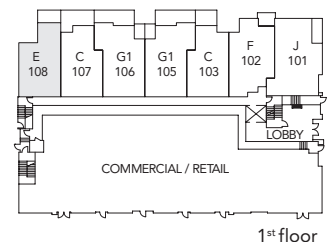
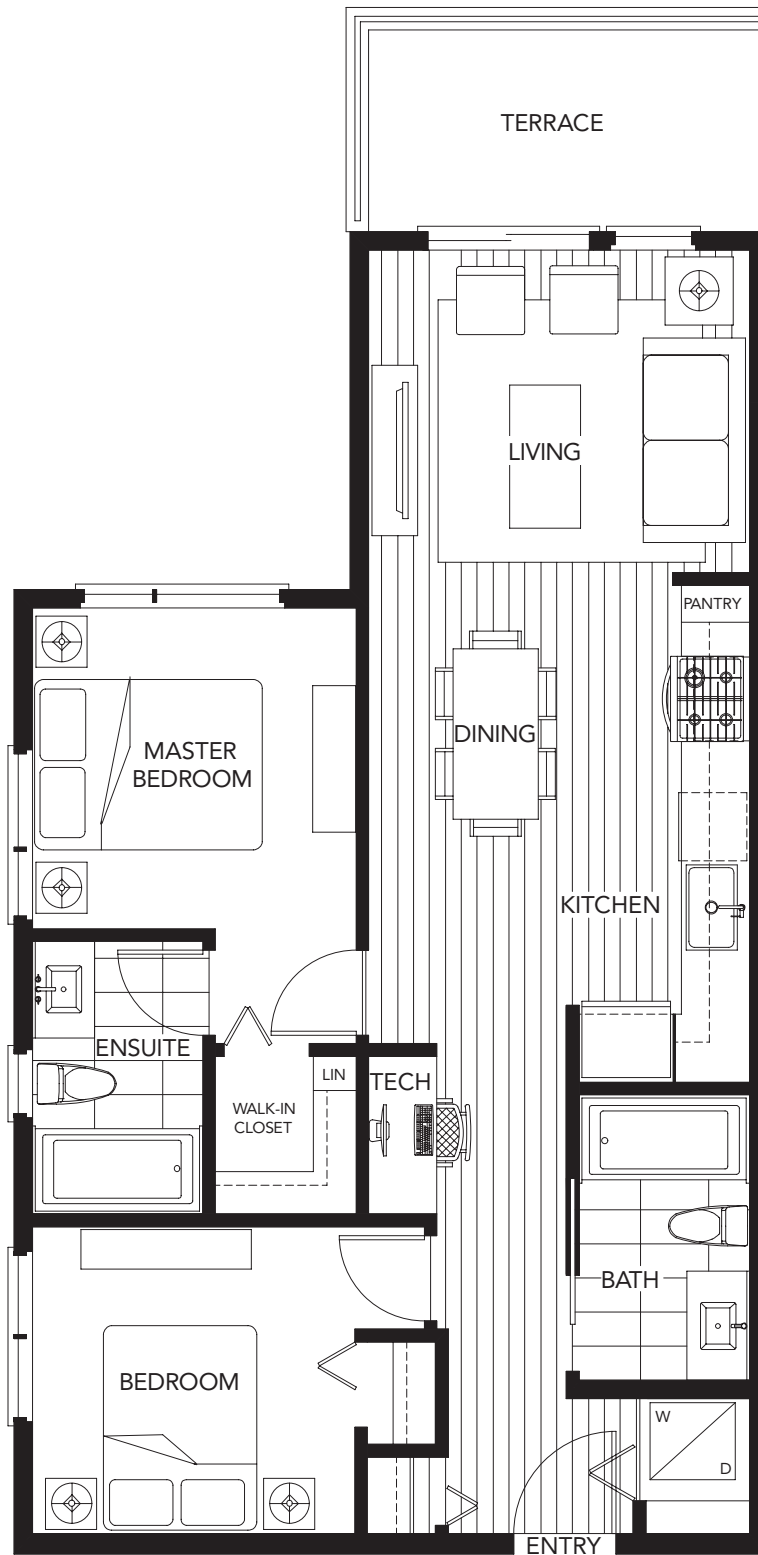
ground floor





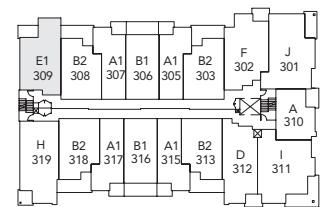
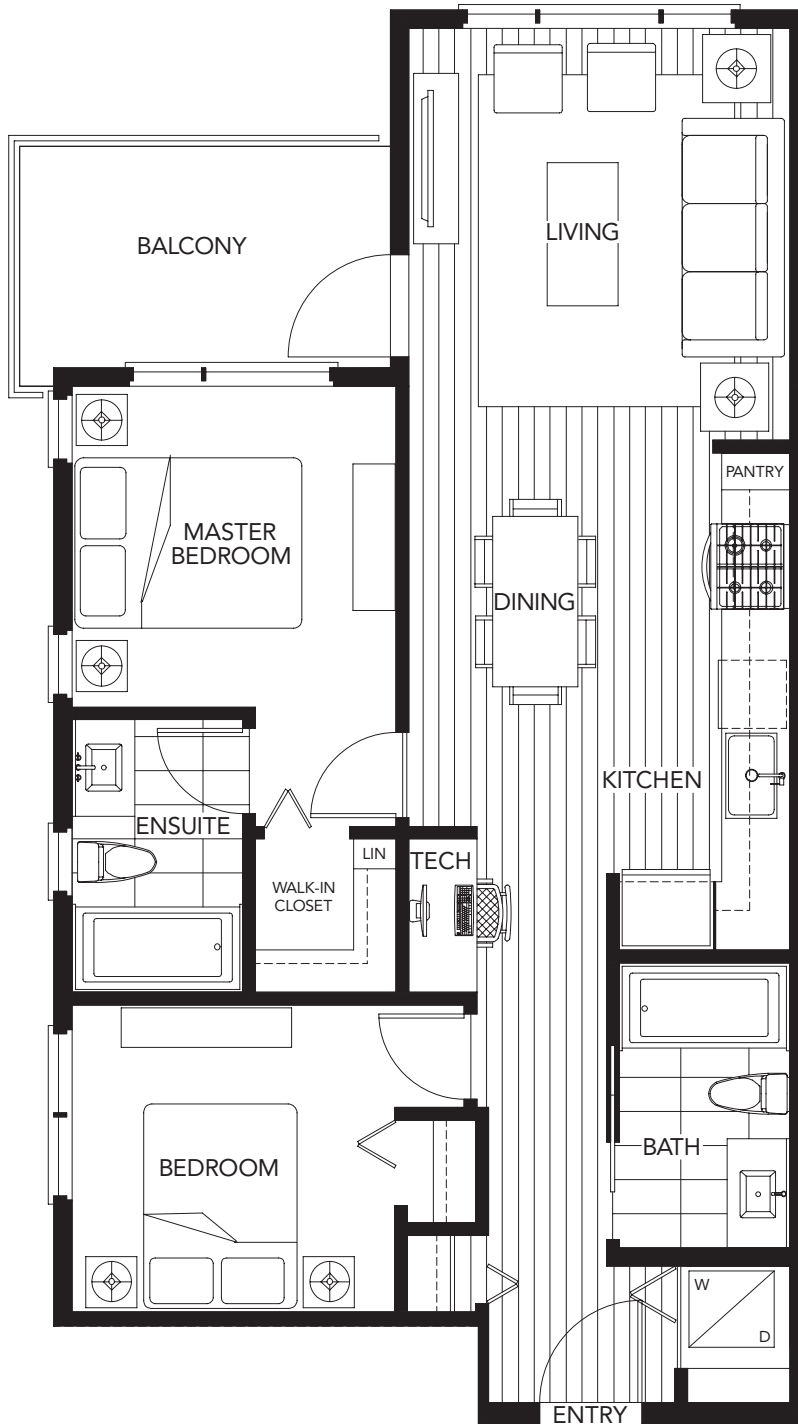
N →



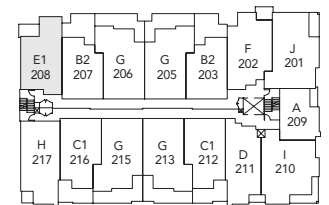


e1

2 bedroom + tech nook
779 sq. ft.



3rd floor



2nd floor

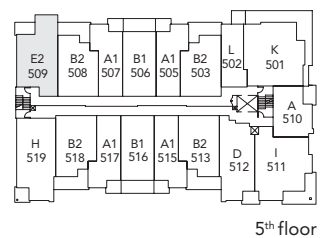
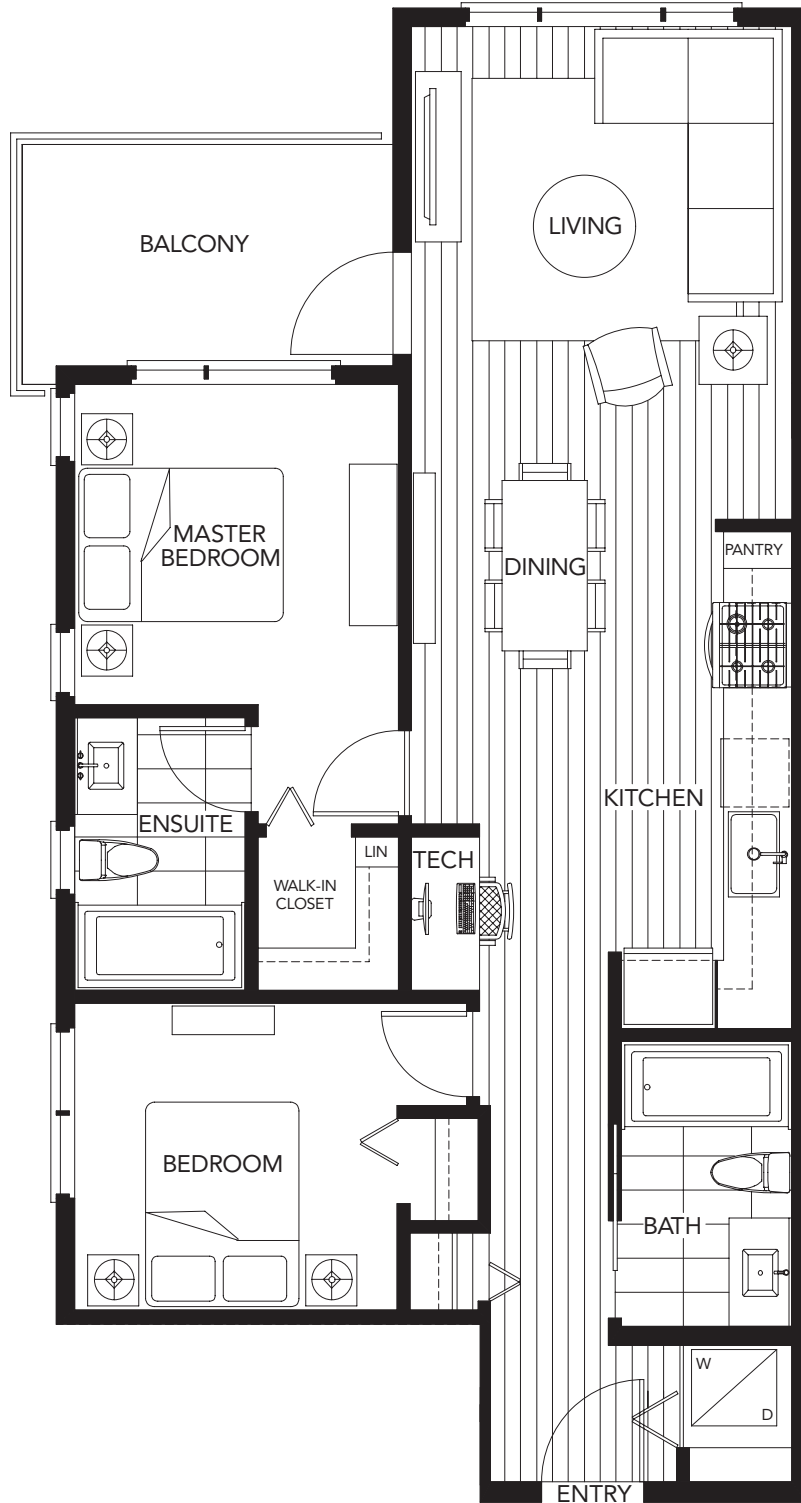


sesame
savour life

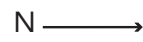
SOLD OUT

e2

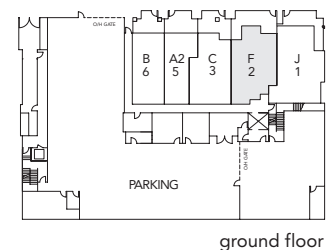
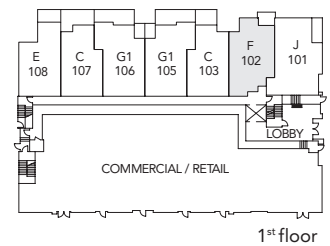
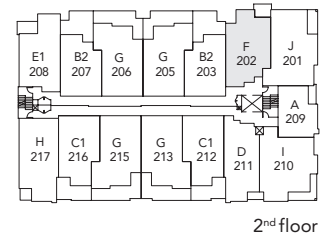
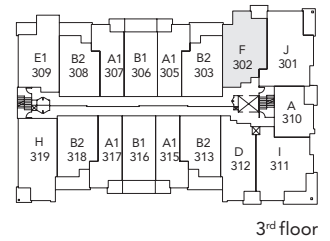
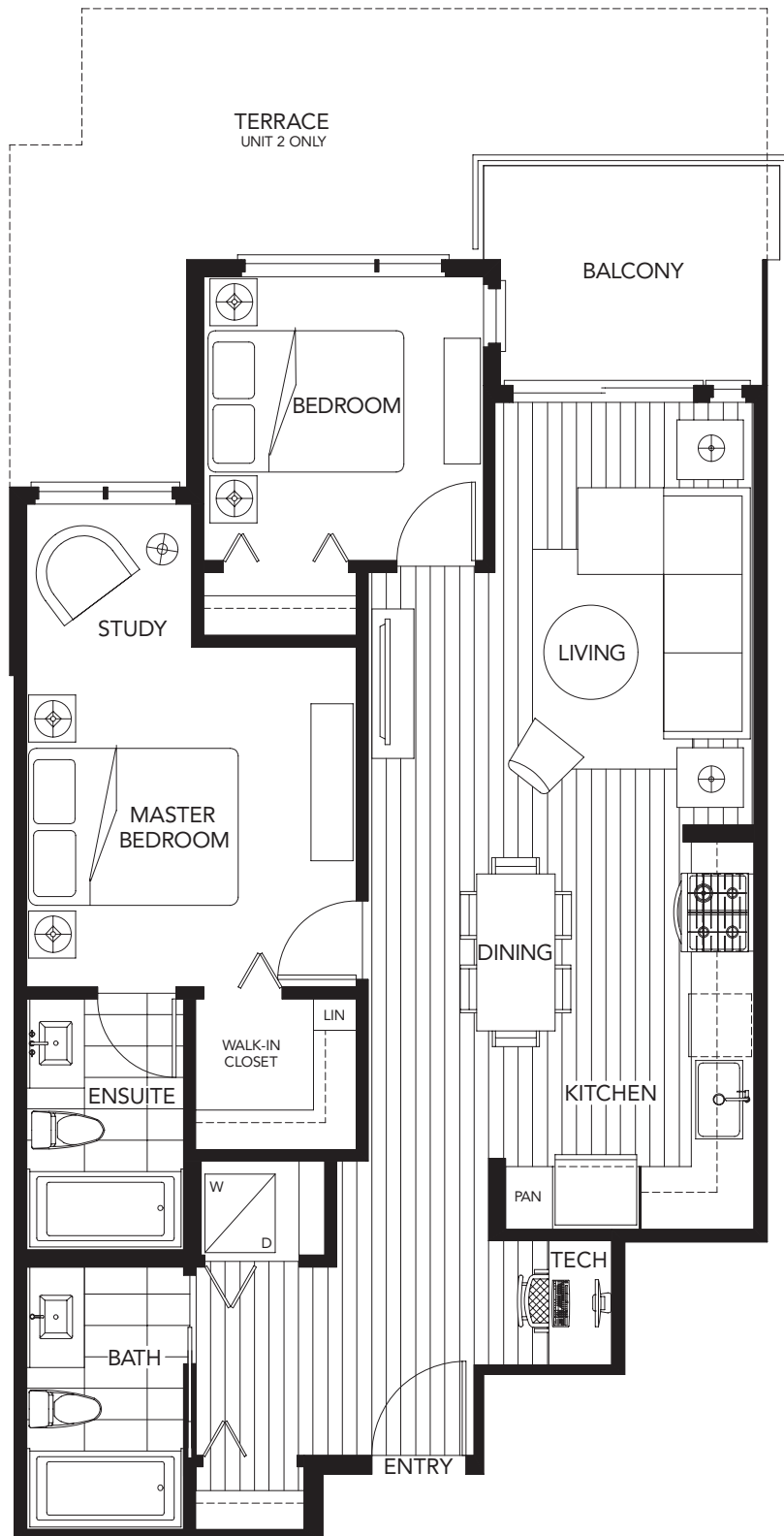
2 bedroom + tech nook
801 sq. ft.

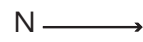
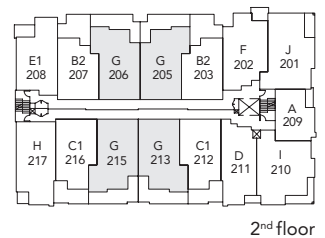
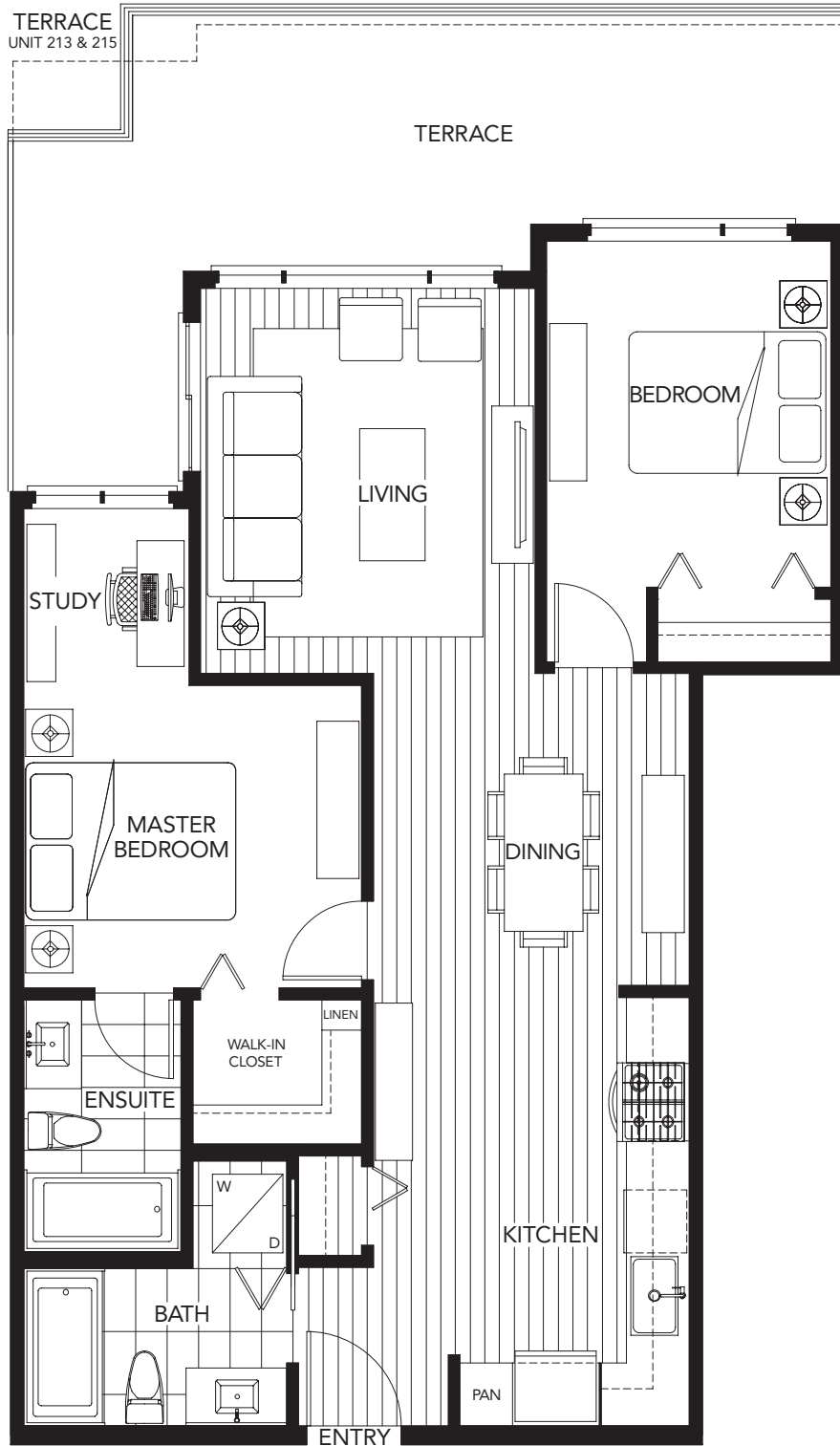


5th floor

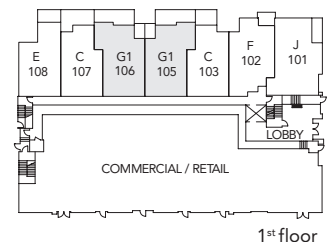
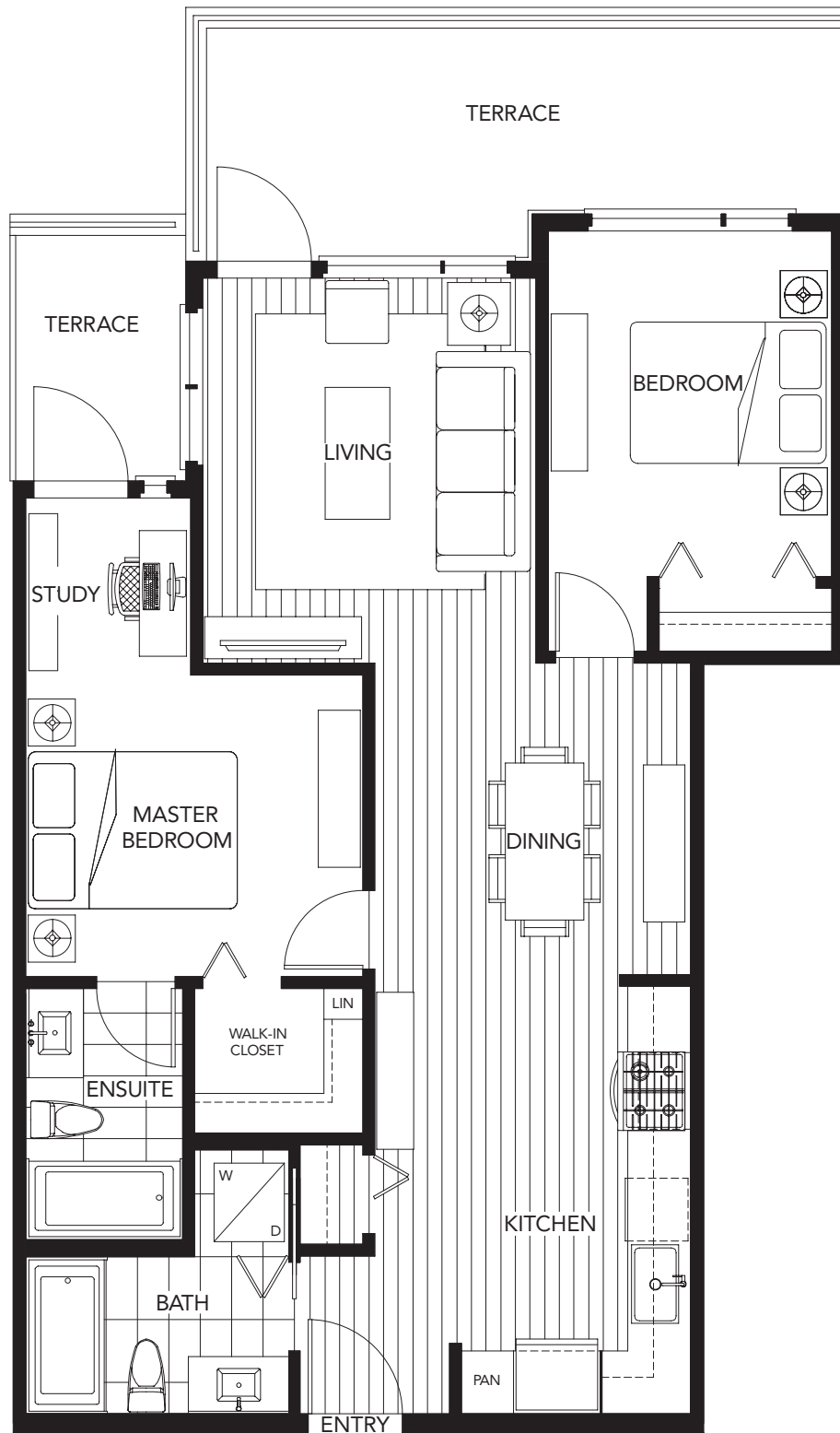


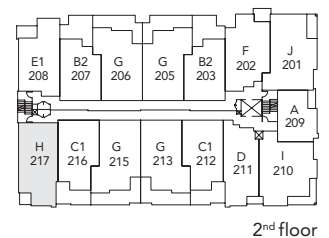
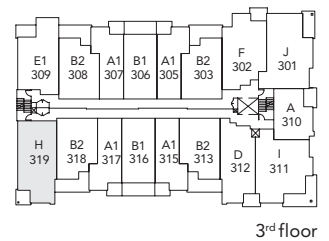
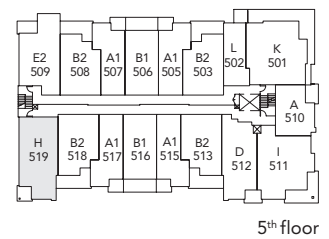
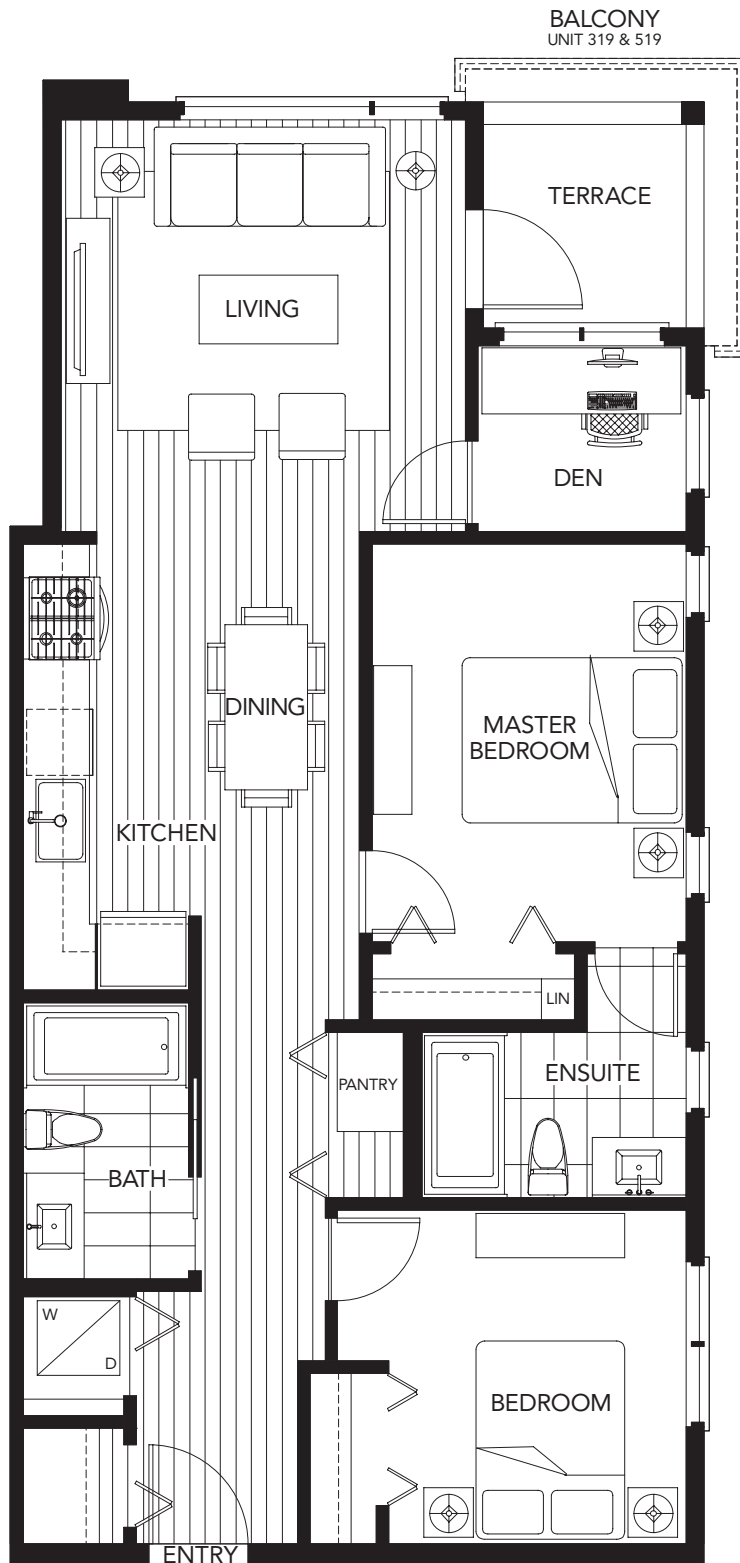
The material provided herein is for general informational purposes only and is not intended to depict as-built post-construction designs. The Developer reserves the right in its discretion to make changes to the floor plans, project designs, specifications, features and dimensions. Square footages are approximate and have been calculated from preliminary strata plan drawings. Actual final dimensions following completion of construction may vary from those set out herein. E.&O.E.

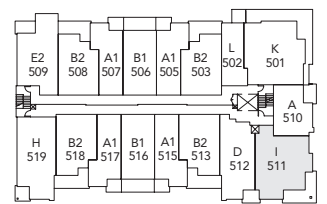
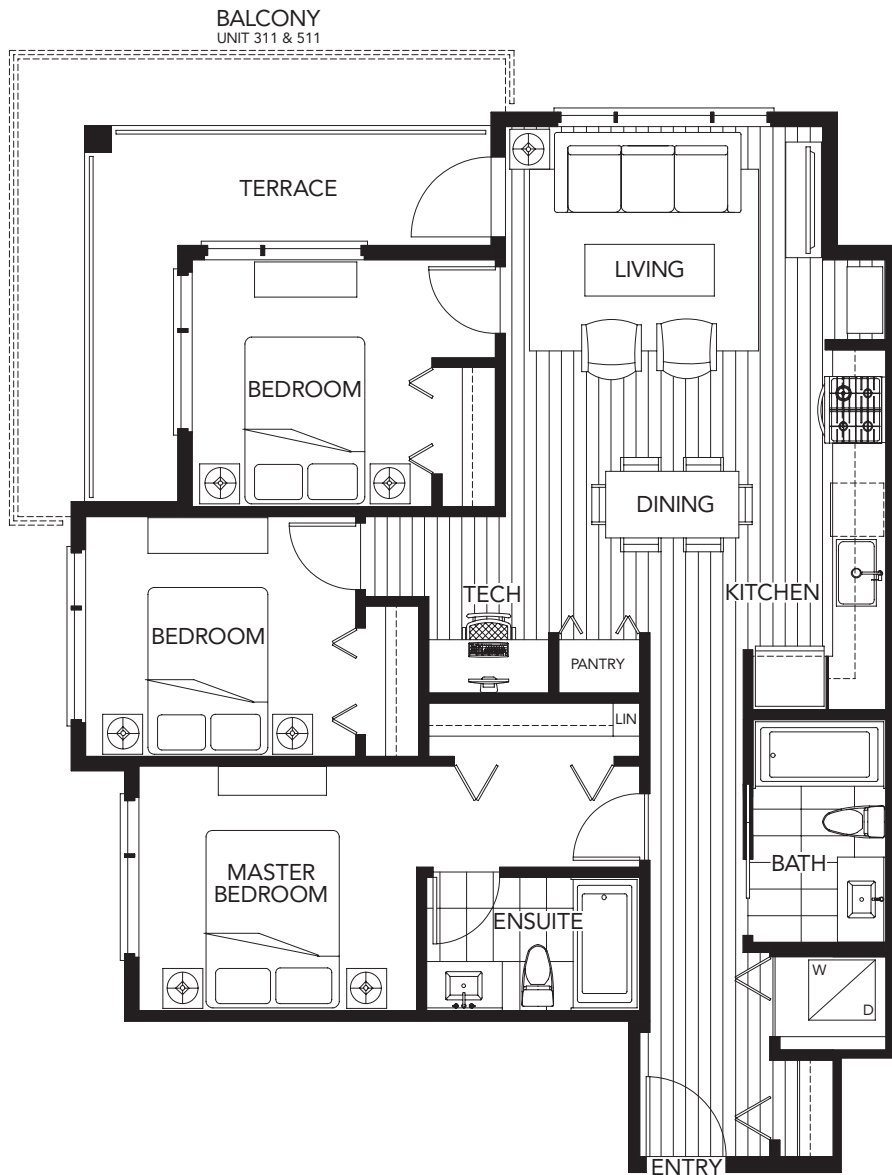




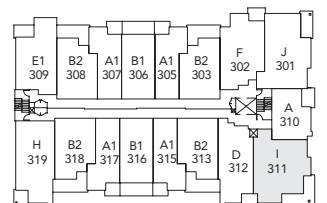
The material provided herein is for general informational purposes only and is not intended to depict as-built post-construction designs. The Developer reserves the right in its discretion to make changes to the floor plans, project designs, specifications, features and dimensions. Square footages are approximate and have been calculated from preliminary strata plan drawings. Actual final dimensions following completion of construction may vary from those set out herein. E.&O.E.



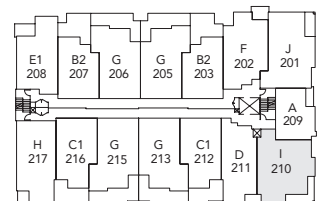




5th floor

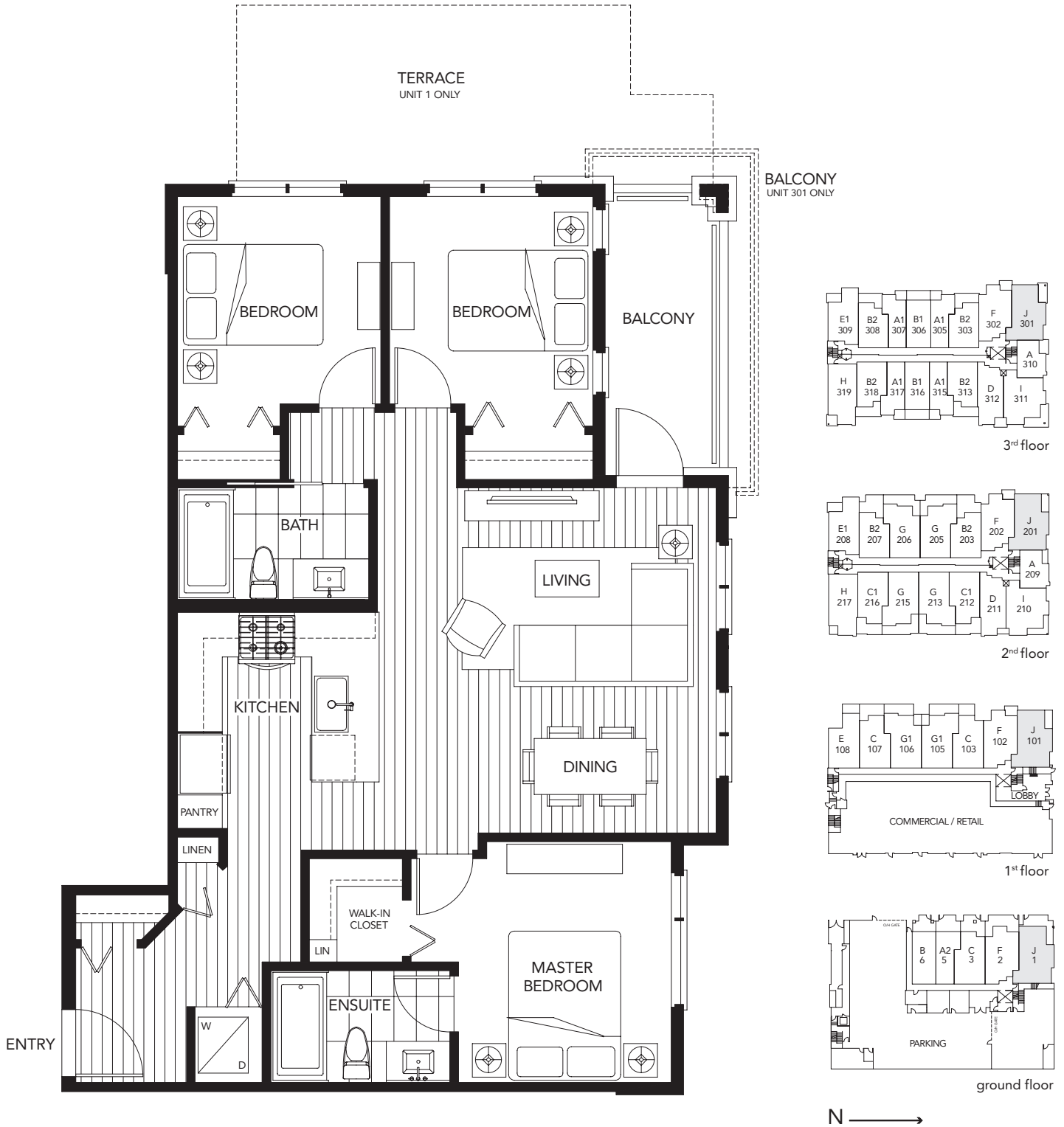


3rd floor

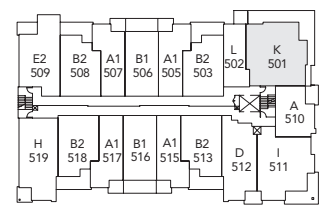
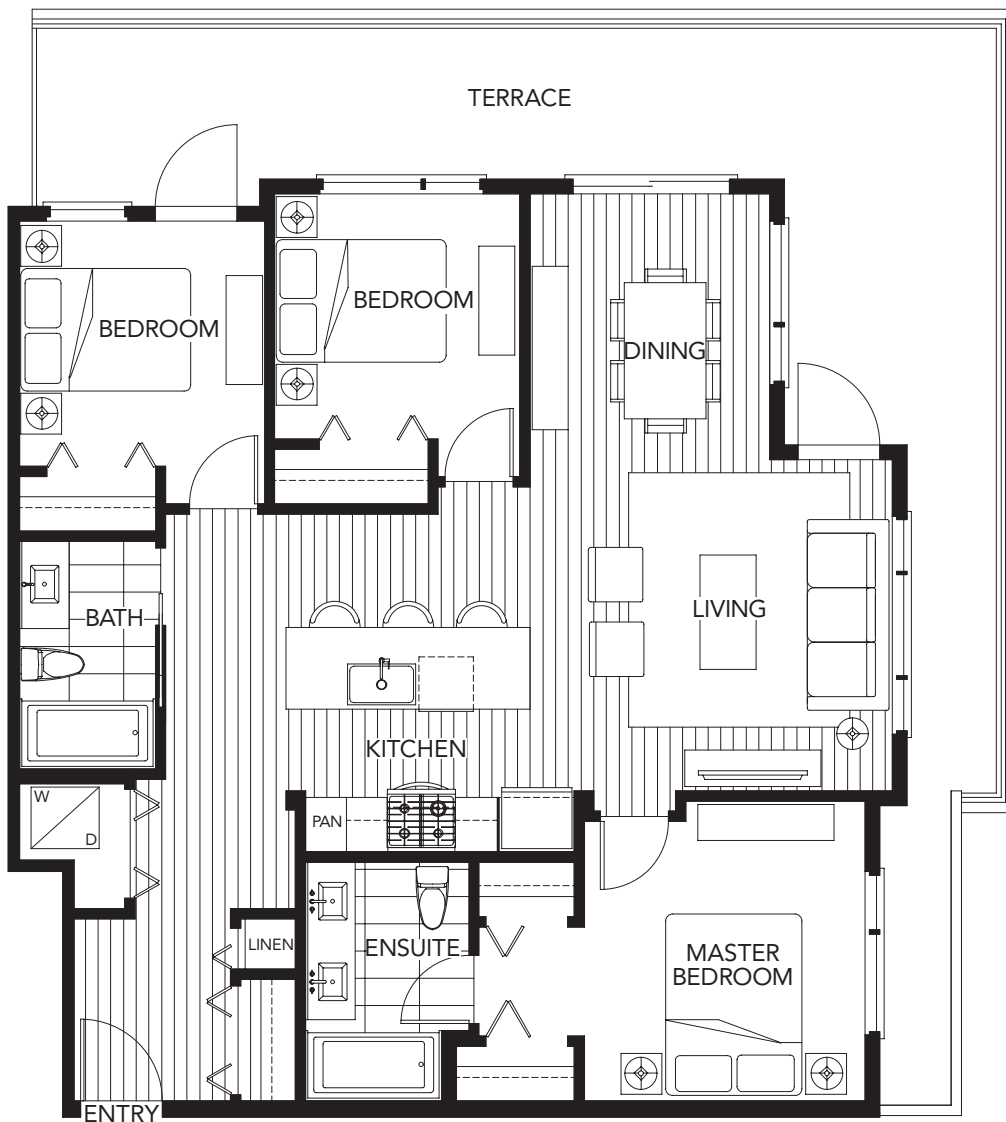


2nd floor



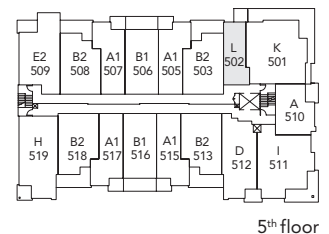
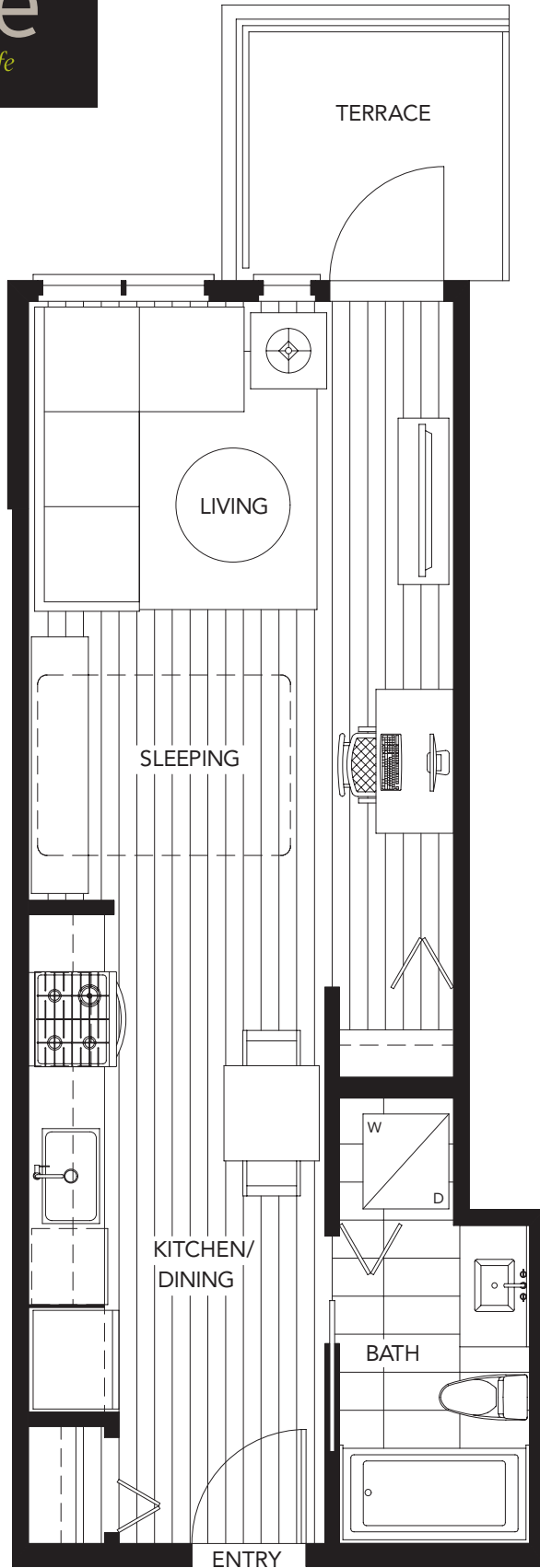


The material provided herein is for general informational purposes only and is not intended to depict as-built post-construction designs. The Developer reserves the right in its discretion to make changes to the floor plans, project designs, specifications, features and dimensions. Square footages are approximate and have been calculated from preliminary strata plan drawings. Actual final dimensions following completion of construction may vary from those set out herein. E.&O.E.



5th floor





N →

inviting interiors

- Interior design by highly-regarded Gannon Ross Designs
- Two contemporary colour palettes to choose from: Walnut or Natural
- Whirlpool Duet full-size stacked front-loading washer and dryer
- Smart glass LowE2 panoramic windows welcome an abundance of natural light and fresh air
- Sleek roller-style shades on all exterior facing windows
- Spacious master bedrooms for ultimate relaxation (select homes)
- Built-in tech nook complete with solid quartz countertop (select homes)
- Scrolled level loop nylon carpet throughout bedrooms for a modern look
- Exotica III Series wide-plank 5.6" laminate hardwood flooring throughout kitchen, den, living and dining areas in "Natural" or "Ebony" complete with 25-year residential warranty
- High-performance laminate hardwood acoustical underlay between floors to reduce sound transfer
- Flat slab-style interior doors with "Bergen" polished chrome lever and solid-core wooden entry door with deadbolt and eye-level viewer
- Decora-style rocker light switches
- 1/2" x 4" flat stock baseboards and 1/2" x 2 1/2" flat stock door trim

heart 'n' soul kitchens

- Premium stainless steel appliance package:
 - Fisher & Paykel Energy Star® 32" fridge with bottom-mount freezer, internal water filtration system, built-in ice maker and water dispenser
 - KitchenAid® thermal oven with frameless cook top, variable time self-cleaning slide-in all-gas 30" range
 - European design high-powered professional-style Venmar Jazz Urban chimney hood fan
 - KitchenAid® Classic Series Tier II Energy Star® dishwasher with sleek, fully integrated console design and adjustable upper rack
- Distinctive dual-toned laminate cabinets with "Frosty" white gloss upper cabinets and "Milwaukee Walnut" or "Urbane Bronze" lower cabinets complete with soft-close hardware
- Kitchens are framed with designer-selected accent paint
- Full-height pantries for added storage (select homes)
- Full-height 19.5" x 2" stacked tile backsplash, hand-set in "Why Not White" or "Why Not Mocha"
- Polished 3/4" solid quartz countertops with eased edge
- "Sonetto" European-style stainless steel undermount sink (single 9"-deep bowl)
- Sleek, polished chrome, single-control faucet with integral pullout sprayer by American Standard

- In-sink waste disposal system
- LED under-cabinet accent strip lighting
- Lazy Susan rotating trays for added convenience (select homes)

beautiful bathrooms

- "Milwaukee Walnut" or "Urbane Bronze" laminate cabinets complete with soft-close hardware
- Polished 3/4" solid quartz countertop with eased edge
- Classic Collection deep soaker tub with integral tiled skirt
- Full-height 24" x 12" stacked porcelain tile tub surround
- Porcelain 24" x 12" porcelain tile floor
- Distinctive mosaic accent tiles in bath surround
- Thoughtfully designed vanities include both drawers and cabinets for maximum organization and convenience
- Rectangular undermount sink with unique tapered bowl
- American Standard "Boulevard" series polished chrome bath and shower collection rain showerhead, single-lever faucet in second bathroom and two-handle widespread faucet in ensuite bathroom
- Stainless steel framed mirror with polished chrome accent light bar above in ensuite
- Chelini Collection dual-flush elongated environmentally conscious water closets
- Modern "Minimaliste" collection polished chrome accessories

green initiatives

- Improved indoor air quality thanks to low VOC paints and flooring throughout
- Smart Location: pedestrian-friendly community with easy access to transit; efficient site-planning for compact housing; and a diverse range of floor plan types
- Water conservation: low-flow toilets, showerheads and faucet aerators, as well as drought-tolerant landscaping
- Energy conservation: high-efficiency instantaneous hot water system; energy-efficient common area lighting; Energy Star® windows, refrigerator, dishwasher and clothes washer; and 2 x 6 R20 exterior wall insulation
- Emissions reduction: pre-wired location in the underground parkade for electrical and hybrid vehicle charging station and electric bike charging station located in one of the secured bicycle storage rooms
- Recycling program: recycling facilities for residents and commercial tenants; recycled materials used in construction; demolition material and up to 75% of construction waste recycled
- Extra-green efforts: native plantings to reduce the need for pesticides and fertilizers; erosion control and vegetation safeguards; soil control and bulk excavating to reduce site disturbance; and environmental workshops with trades and suppliers

flip for more flavour

connected & convenient

- Pedestrian friendly community with groceries and numerous other amenities and services within walking distance
- Telus Future Friendly Homes® come technology ready with the Telus Smart Hub for easy and secure WiFi connectivity and Internet access, CAT5e wiring and multiple pre-wired connections for high-speed cable and Internet
- Pre-wired tech nooks with built-in solid quartz work surfaces (select homes)
- Free Telus TV and High-Speed Internet for one year
- Secure bicycle storage rooms
- Storage lockers at the parking level

exemplary exterior

- West Coast contemporary architecture designed by one of Vancouver's premier firms—the award-winning Rositch Hemphill Architects—to complement the surrounding neighbourhood
- Construction by Marcon, one of the province's leading builders
- Oversized LowE2 glazed windows to optimize sunlight, fresh air and views
- Generous patios and terraces to extend living space outdoors
- Quality materials, both traditional and contemporary, with brick accents, hardie plank lap siding, hardipanel siding, and beaded vinyl and stained wood accent soffits
- Rooftop garden complete with natural gas BBQ, seating area and 360° city and mountain views

peace of mind

- Secure, well-lit underground parkade with emergency panic stations, fob-only access and video surveillance
- Fob-only access lobby with video surveillance, plus enterphone with security camera at lobby and visitor parking
- Elevator with restricted floor access
- State-of-the-art fire protection system including centrally monitored sprinklers and smoke detectors in every home
- Comprehensive new home warranty backed by Travelers Guarantee Company of Canada including 2 years for materials, 5 years for building envelope and 10 years for structural components
- Marcon's dedicated, after-sale customer service team makes living in your home as enjoyable and worry-free as possible