

Plan D2a – Adaptable

2 BEDROOM · 2 BATHROOM

INTERIOR: 875–876 SF

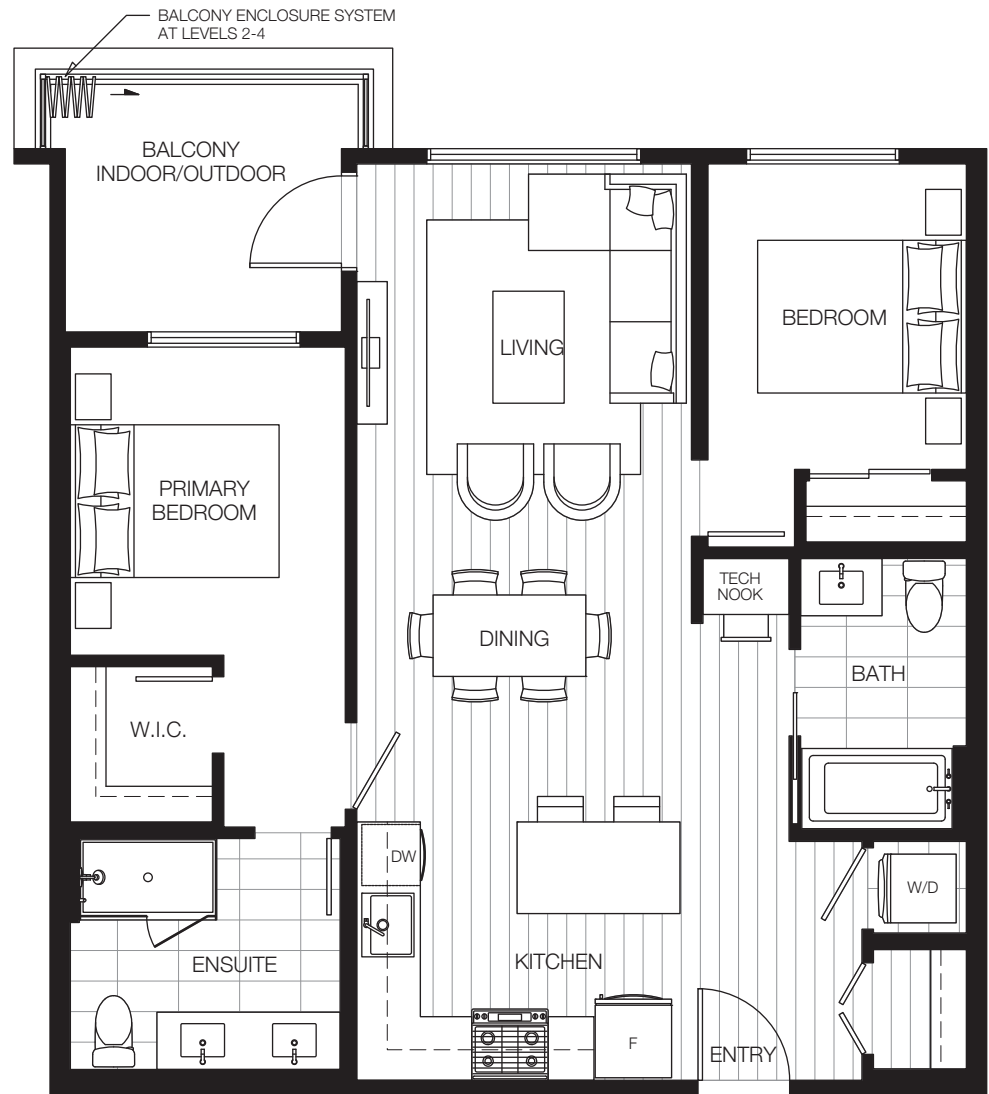
BALCONY: 73–75 SF

TOTAL: 948–952 SF

silva 3
HOMES IN THE HEART OF SURREY

Homes 209, 210, 309, 310, 409 and 410 are adaptable units and include the features listed below:

- Continuous countertop between the kitchen sink and range
- Light switches and electrical outlets installed lower than four feet
- More generous floor space around entrance
- Bathroom wall will accommodate future installation of grab bars
- Bathrooms and interior doorways have more generous clearance for people with mobility challenges



This is not an offering for sale. Any such offering can only be made with a disclosure statement. The developer reserves the right to make changes and modifications to the information contained herein without prior notice. Dimensions, sizes, areas, specifications layout and materials are approximate only and subject to change without notice. E.&O.E.



W WANSON GROUP

MARKETING BY
rennie