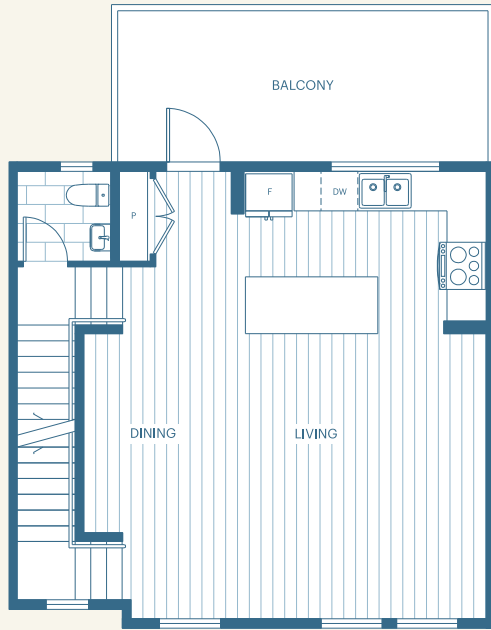
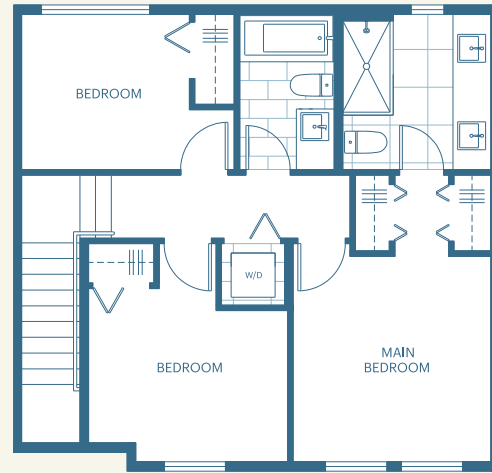


Hyde H Plan 3 Bedroom

1329 sq ft

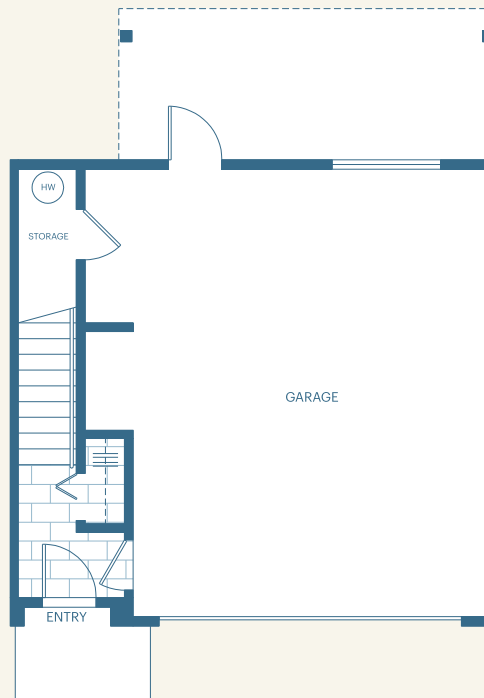


MAIN



UPPER

This home has 3 bedrooms, perfect for growing families. On the upper floor, the main bedroom is the perfect retreat for parents with a walk-through closet and bathroom with a window for natural light. Two more bedrooms and a second bathroom give the kids their own space, while a convenient laundry closet keeps things tidy. Downstairs, the main floor was made for connection. This free-flowing area gives you space to dine and relax, with a big kitchen island that's ideal for sharing a meal with family after a busy day. When the warm summer months come around, the balcony is perfect for dining outside. On the lower floor, you'll find a garage with room for storage and side-by-side parking.



LOWER