

# MARBLE HILL

LUXURY LIVING

Available on Lot 6

6 bedroom | 4.5 bathrooms | 3,525 sq.ft



Front Exterior

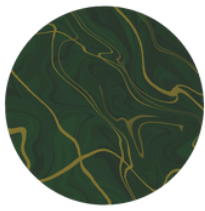


Main Floor  
1141 sq.ft

## Green Marble Plan



The developer, Noura Homes, reserves the right to substitutions and modifications. Any measurements, features and finishes provided are approximate only and should not be relied upon. E&OE.



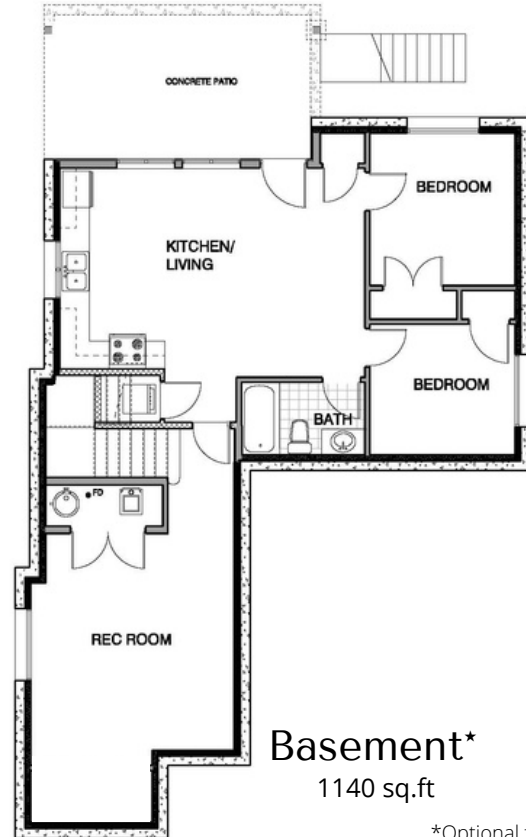
# MARBLE HILL

LUXURY LIVING

Available on Lot 6



Upper Floor  
1242 sq.ft



Basement\*  
1140 sq.ft

\*Optional features available

## Green Marble Plan

The developer, Noura Homes, reserves the right to substitutions and modifications. Any measurements, features and finishes provided are approximate only and should not be relied upon. E&OE.

