



NELSON
& GROVE



CEDAR
TOTAL AREA: 3,212 SQ.FT (Including Unfinished Basement)

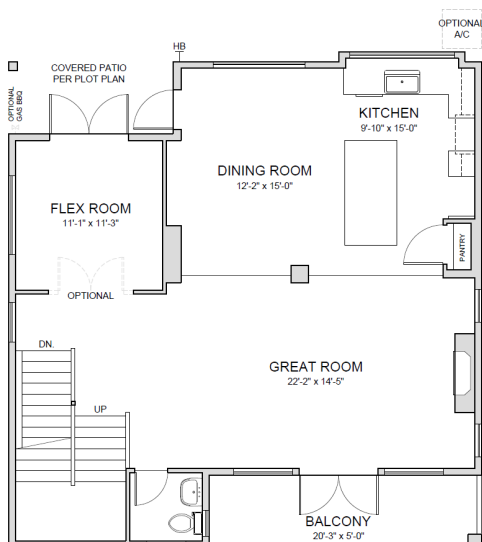
PRELIMINARY Dec. 7/21



UPPER FLOOR - CEDAR 'B'

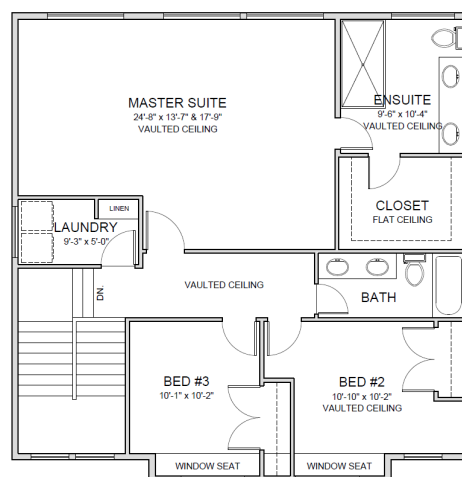


UPPER FLOOR - CEDAR 'C'



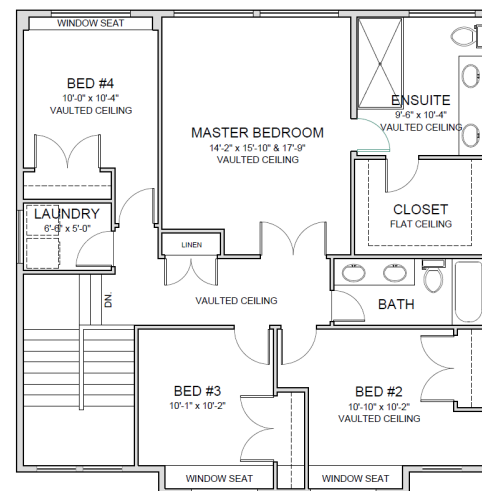
MAIN FLOOR

Total Floor Area: 1,147 sq.ft.
Based on Cedar 'A'



UPPER FLOOR - SITTING ROOM

Total Floor Area: 1,115 sq.ft.
Based on Cedar 'A'



UPPER FLOOR - 4 BEDROOM

Total Floor Area: 1,115 sq.ft.
Based on Cedar 'A'

MORNINGSTAR

THE PURCHASER IS ADVISED THAT THESE PLANS AND OR ELEVATIONS ARE SUBJECT TO CHANGE AT THE SOLE DISCRETION OF MORNINGSTAR HOMES LTD. PENDING CONVERSION TO PROPER WORKING DRAWINGS/CONSTRUCTION DOCUMENTS. SPECIFIC ROOM DIMENSIONS, FLOOR AREAS, AND OR INDIVIDUAL FEATURES/ELEMENTS MAY ALSO BE SUBJECT TO CHANGE AT THE SOLE DISCRETION OF MORNINGSTAR HOMES LTD. MORNINGSTAR HOMES LTD. RESERVES THE RIGHT TO MODIFY AND OR AFFECT CHANGES TO MEET REQUIREMENTS OF THE CITY OF MISSION, CONFORM TO APPLICABLE CITY OF MISSION BY-LAWS, REGISTERED DESIGN GUIDELINES, COVENANTS AND THE BC BUILDING CODE. E.&O.E.



NELSON & GROVE



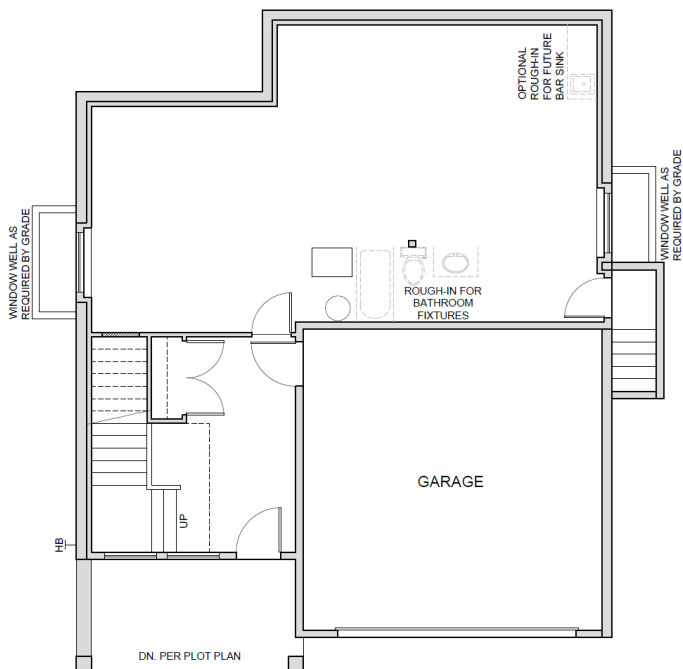
CEDAR 'A'



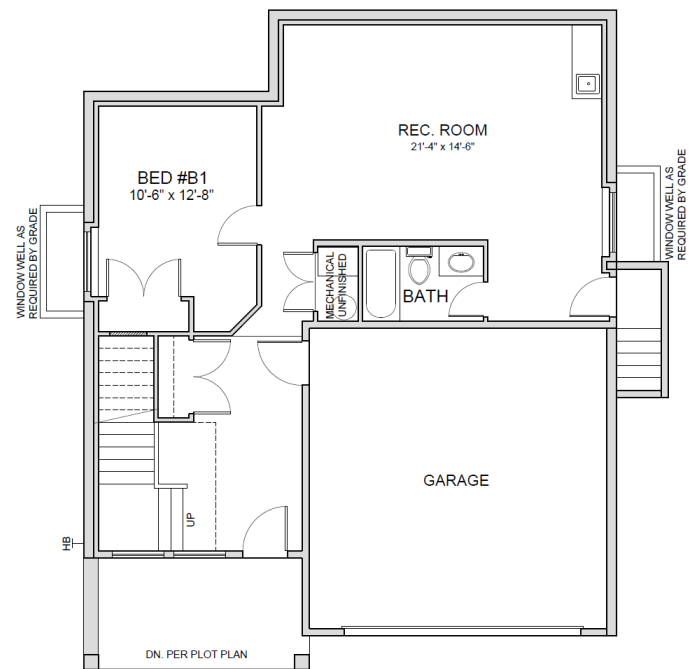
CEDAR 'B'



CEDAR 'C'



UNFINISHED BASEMENT
Total Floor Area: 950 sq.ft.



FINISHED BASEMENT
Total Floor Area: 940 sq.ft.



THE PURCHASER IS ADVISED THAT THESE PLANS AND OR ELEVATIONS ARE SUBJECT TO CHANGE AT THE SOLE DISCRETION OF MORNINGSTAR HOMES LTD. PENDING CONVERSION TO PROPER WORKING DRAWINGS/CONSTRUCTION DOCUMENTS. SPECIFIC ROOM DIMENSIONS, FLOOR AREAS, AND OR INDIVIDUAL FEATURES/ELEMENTS MAY ALSO BE SUBJECT TO CHANGE AT THE SOLE DISCRETION OF MORNINGSTAR HOMES LTD. MORNINGSTAR HOMES LTD. RESERVES THE RIGHT TO MODIFY AND OR AFFECT CHANGES TO MEET REQUIREMENTS OF THE CITY OF MISSION, CONFORM TO APPLICABLE CITY OF MISSION BY-LAWS, REGISTERED DESIGN GUIDELINES, COVENANTS AND THE BC BUILDING CODE. E.&O.E.