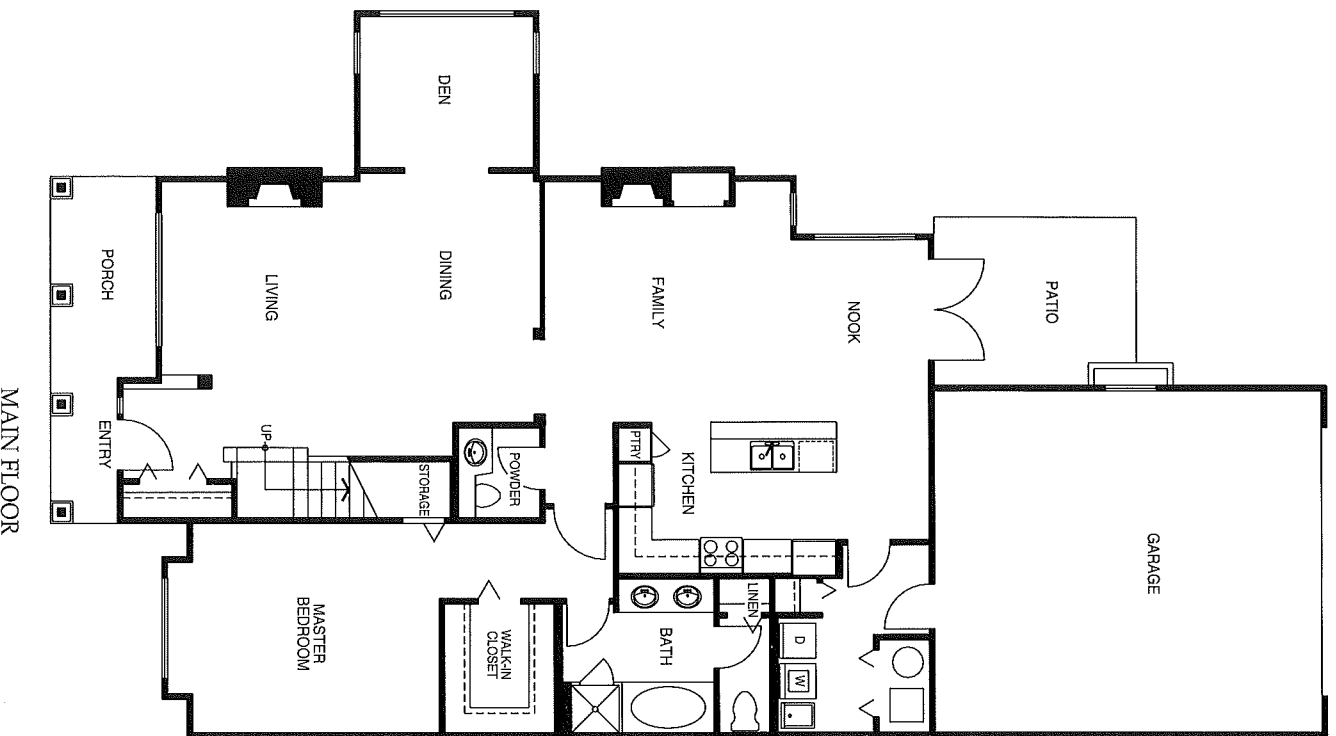


T h e

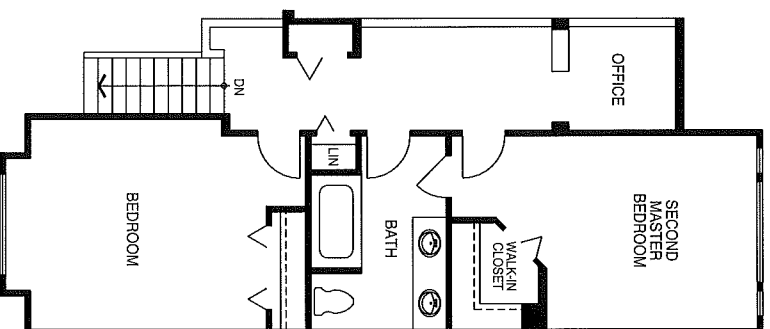
HERON

Plan A3 - Approx. 2,350 sq. ft.

An old-fashioned front porch with traditional street front entry and yard welcomes you to the Heron. The spacious living/dining area features a dramatic vaulted ceiling and a main floor den. The open plan gourmet kitchen offers a large work island with breakfast bar. A sunny nook opens onto the patio. The beautiful master suite is located on the main floor and has a walk-in closet, and sumptuous ensuite bath... soaker tub, dual sinks, walk-in shower, and even a separate water closet. The upstairs provides two large additional bedrooms, a full bath, and a flex room perfect for your at-home office.



MAIN FLOOR



UPPER FLOOR