

T h e

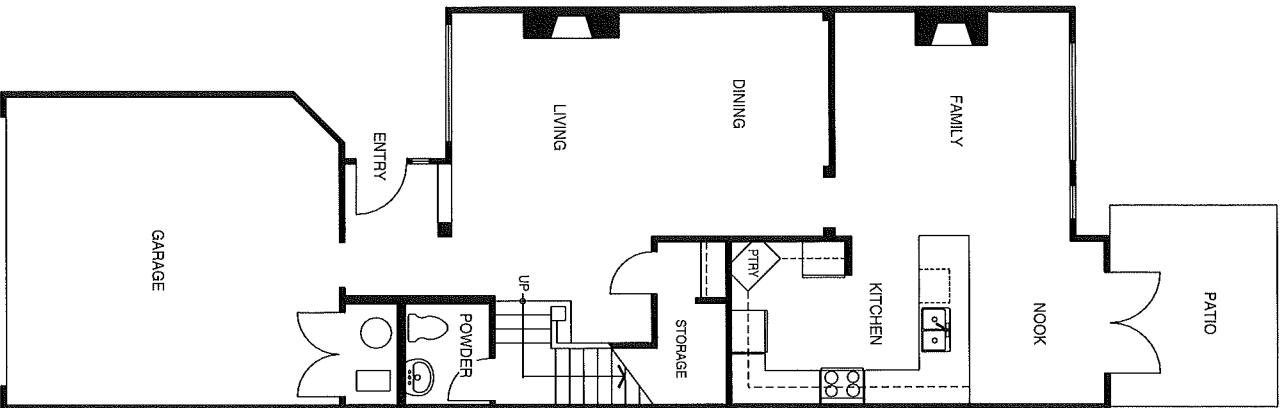
MALLARD

Plan C - Approx. 2,170 sq. ft.

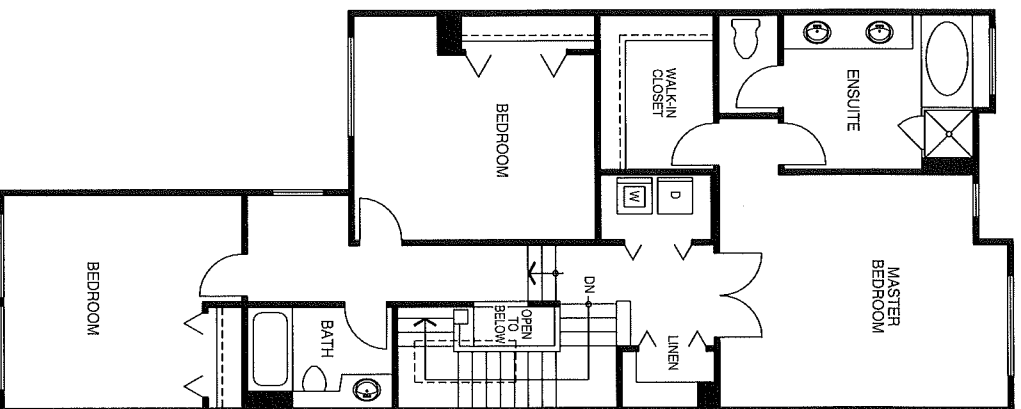
The Mallard is a perfect home for entertaining friends and family. The spacious kitchen is fully-equipped and ready for your gourmet endeavors.

The living room has an elegant raised ceiling and is brightened by a wall of windows and a cozy fireplace- and there's a second fireplace in the family room. In

summertime, a barbecue is all you need to have a garden party on your patio. Upstairs, you'll love the huge master suite, with bright windows gazing over the private back yard. The ensuite offers luxuries like dual vanity sinks, deep soaker tub, separate walk-in shower and private water closet. Two extra bedrooms provide plenty of space for guests or an office.



MAIN FLOOR



UPPER FLOOR