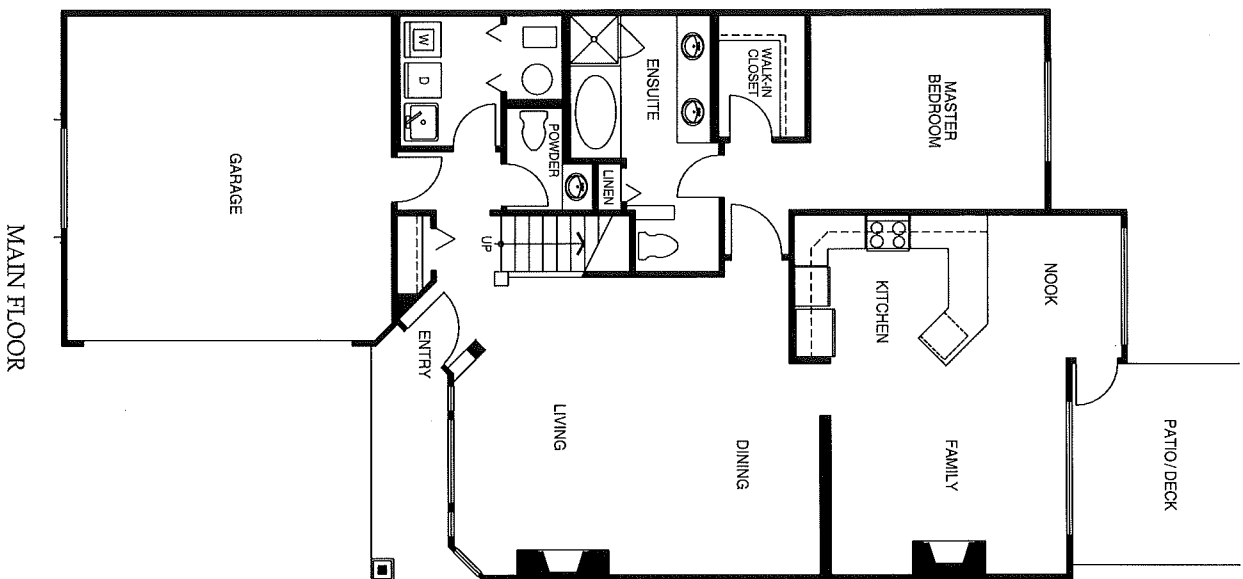


T h e

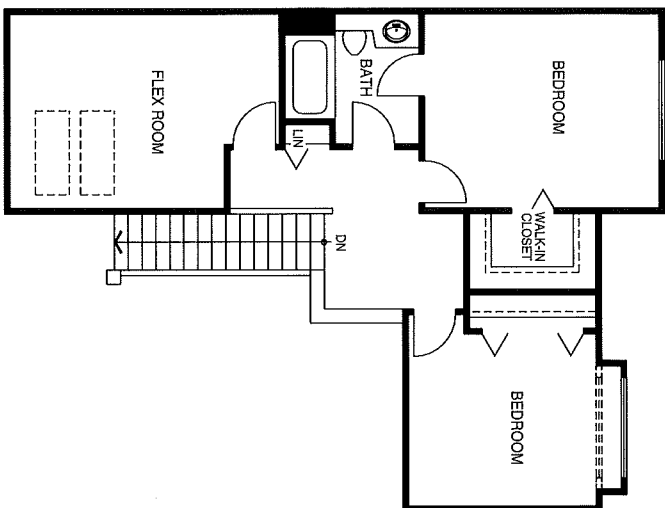
SANDPIPER

Plan B - Approx. 2,040 sq. ft.

The Sandpiper's spacious main floor master suite looks out onto the private backyard and features a luxurious ensuite bath. The kitchen is a gourmet's dream, with plenty of cabinet and counter space. The open plan living/dining room with vaulted ceiling is an elegant setting for entertaining, while the family room with its cozy fireplace provides informal space to relax. Two private bedrooms with plenty of closet space, and a full second bath on the upper level will make visiting friends and family feel right at home. Extra conveniences include a large flex room with opening sky lights - ideal for storage, den or hobby room.



MAIN FLOOR



UPPER FLOOR