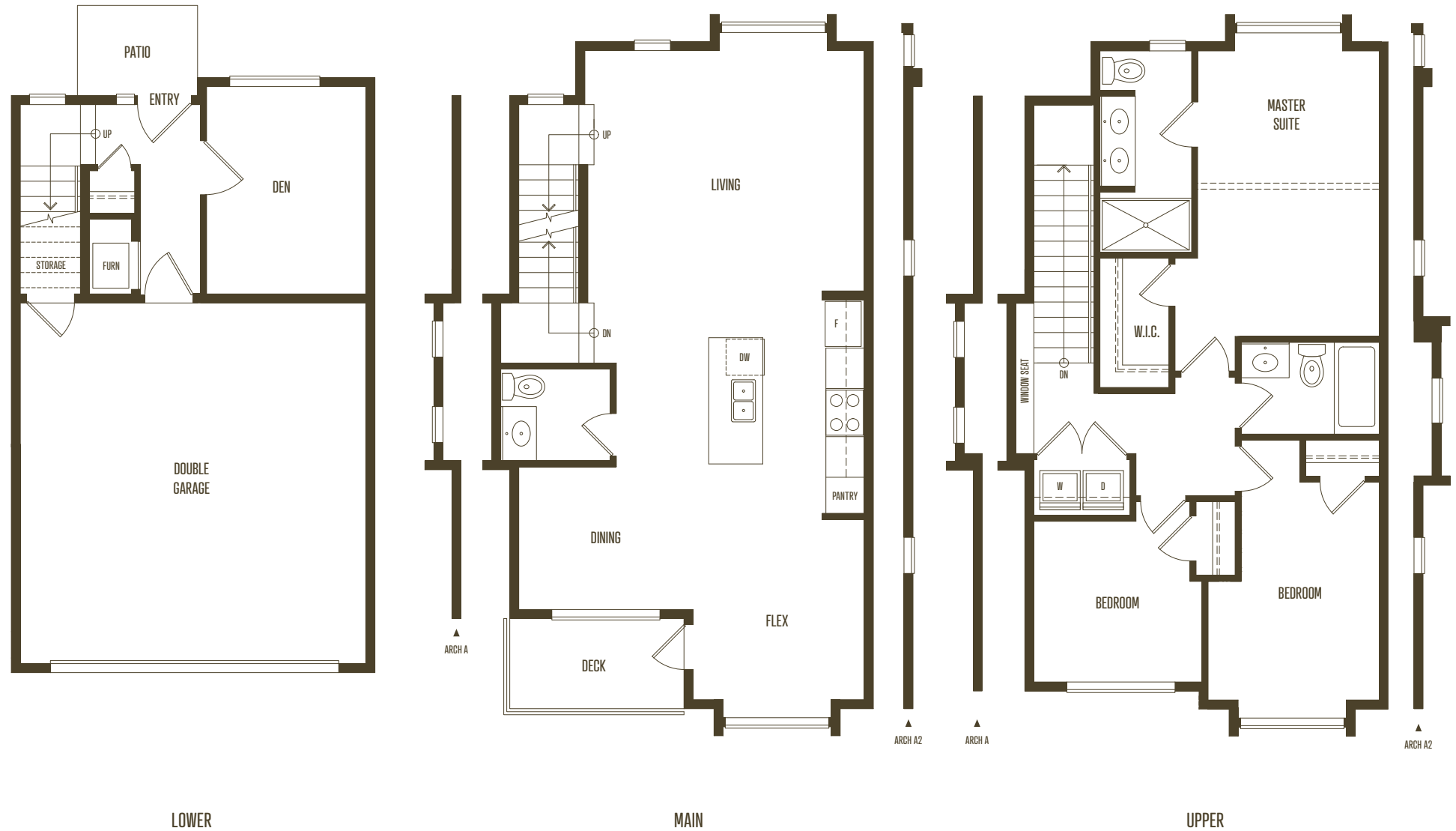


UNION

EST. 1896

A

3 Bedroom
2.5 Bathroom
+ Flex Room
1,646 – 1,679 s.f.



PROUDLY BUILT BY 



Updated: Oct 26/21 In our continuing effort to improve and maintain the high standard of the Union development, the developer reserves the right to modify or change plans, specifications, features and prices without notice. Materials may be substituted with equivalent or better at the developer's sole discretion. All dimensions and sizes are approximate and are based on Architectural measurements. As reverse, flipped, and/or mirrored plans occur throughout the development please see architectural plans for exact unit layout if material to your decision to purchase. Please ask one of the helpful sales staff to reference the most recent set of architectural construction drawings for most up to date dimensions and other details. Please refer to disclosure statement for specific offering details. E. & O.E. Sales and Marketing provided by Fifth Avenue Real Estate Marketing Ltd. 604-583-2212

UNIONLANGLEY.com