

# Andromeda

3 Bedrooms • 2.5 Bathrooms  
1,837 Sq. Ft.



A three-storey detached home, Andromeda offers a traditional layout with two private balconies, a spacious walk-in pantry, and a den. The open concept main floor is the perfect entertaining space, with a beautiful kitchen and living room opening right onto your covered deck.



1631 Summer Crescent Kelowna, BC V1P 1T2  
SolsticeSales@parkbridge.com  
250-491-3353

**SolsticeTowerRanch.com**

**pma**brethour  
PMA BRETHOUR REALTY GROUP BROKERAGE

Parkbridge Lifestyle Communities Inc. makes no warranty or representation, expressed or implied, concerning the accuracy or completeness of the information contained within. This is not an offer to sell, nor an offer to buy, to residents of any province or state in which registration or other legal requirements have not been fulfilled. Features, amenities and floorplan specifications represent the builder's current concepts and plans and are subject to change without notice. Substitution of materials shall be of equal or greater value. Actual usable floor space may vary from stated floor area. E. & O. E.

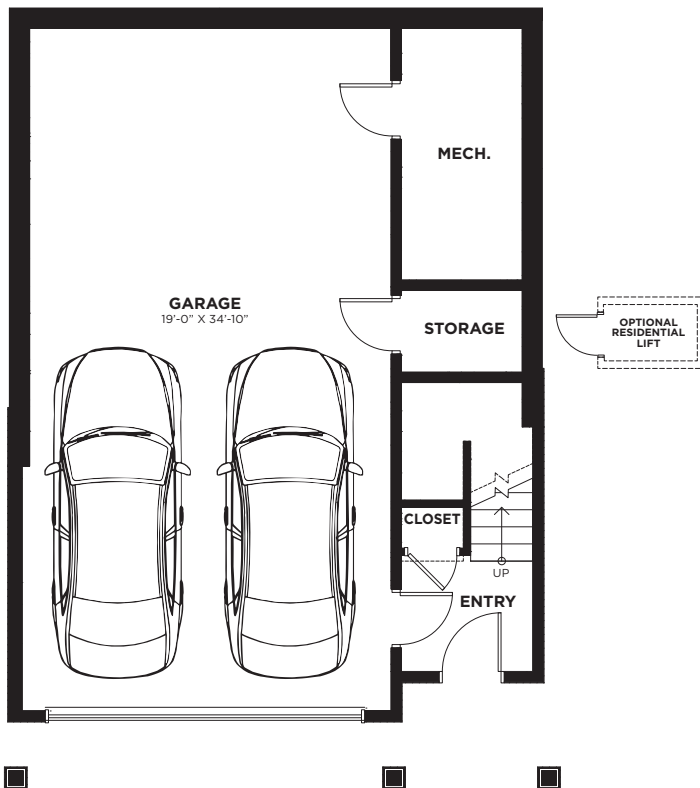
2022.07.20

# Andromeda

3 Bedrooms • 2.5 Bathrooms  
1,837 Sq. Ft.

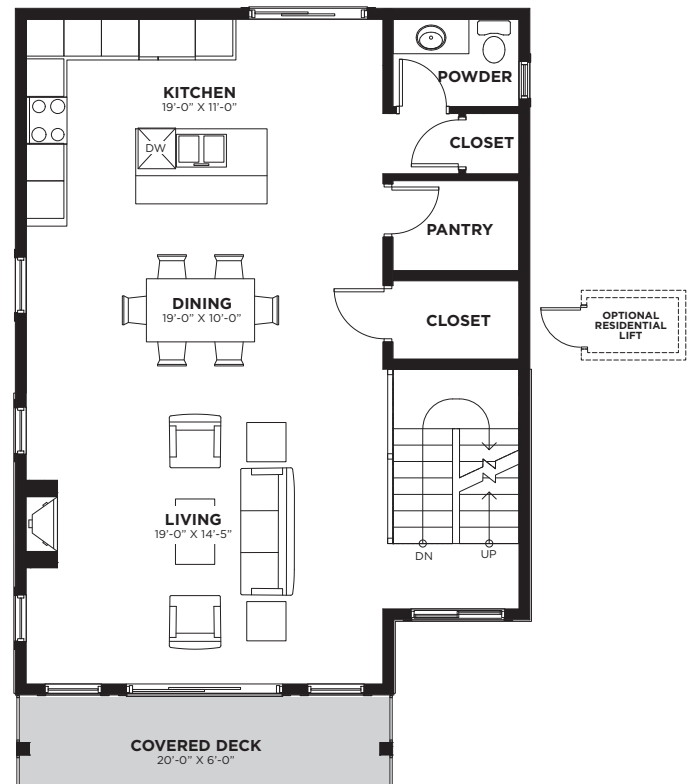
## ENTRY LEVEL

Total floorspace 125 Sq. Ft.  
Garage 852 Sq. Ft.



## MIDDLE LEVEL

Total floorspace 896 Sq. Ft.  
Excluding stairs



# Andromeda

3 Bedrooms • 2.5 Bathrooms  
1,837 Sq. Ft.

## UPPER LEVEL

Total floorspace 816 Sq. Ft.

