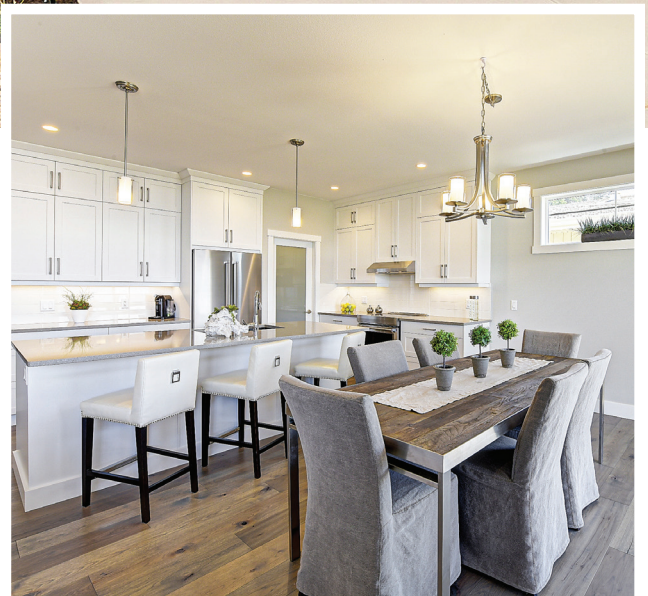


Pegasus II

3 Bedrooms • 3 Bathrooms
2,906 Sq. Ft.



An open concept kitchen, living, and dining room is the perfect place to live, entertain, and relax. Pegasus also offers a finished basement, flexroom with direct access to the private patio.



1631 Summer Crescent Kelowna, BC V1P 1T2
SolsticeSales@parkbridge.com
250-491-3353
SolsticeTowerRanch.com

pma brethour
PMA BRETHOUR REALTY GROUP BROKERAGE

Parkbridge Lifestyle Inc. makes no warranty or representation, expressed or implied, concerning the accuracy or completeness of the information contained within. This is not an offer to sell, nor an offer to buy, to residents of any province or state in which registration or other legal requirements have not been fulfilled. Features, amenities and floorplan specifications represent the builder's current concepts and plans and are subject to change without notice. Substitution of materials shall be of equal or greater value. Actual usable floor space may vary from stated floor area. E. & O. E.

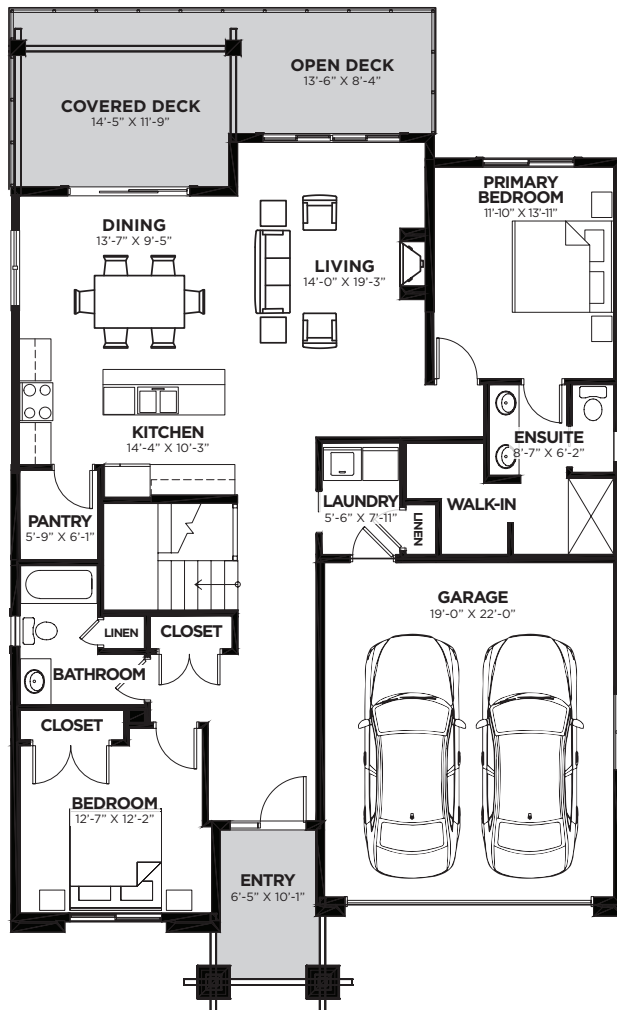
2022.10.26

Pegasus II

3 Bedrooms • 3 Bathrooms
2,906 Sq. Ft.

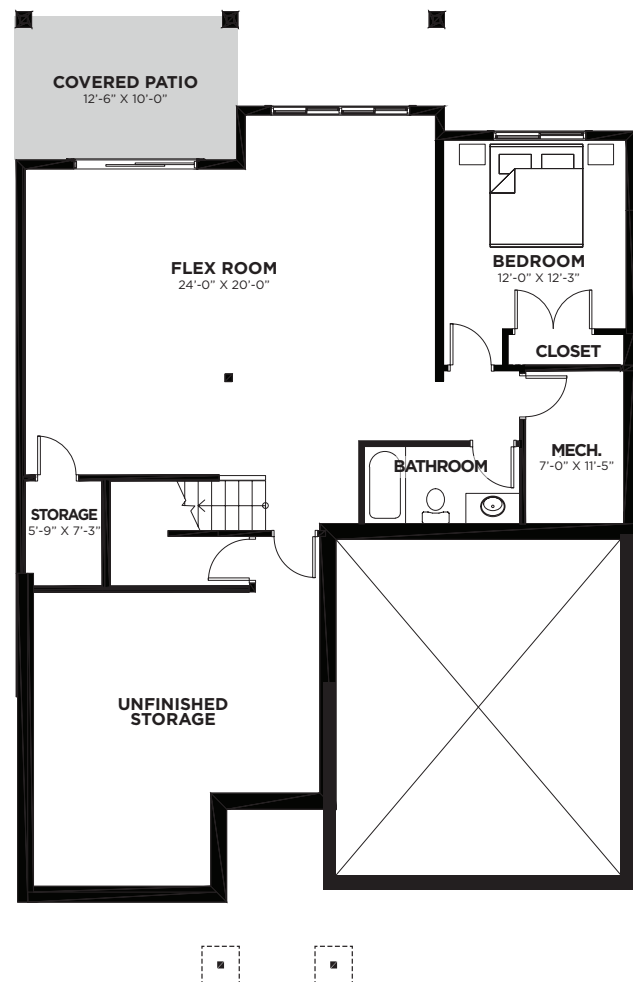
ENTRY LEVEL

Total floorspace 1,478 Sq. Ft.
Garage 450 Sq. Ft.



LOWER LEVEL

Total floorspace 1,428 Sq. Ft.
Finished basement



Parkbridge Lifestyle Inc. makes no warranty or representation, expressed or implied, concerning the accuracy or completeness of the information contained within. This is not an offer to sell, nor an offer to buy, to residents of any province or state in which registration or other legal requirements have not been fulfilled. Features, amenities and floorplan specifications represent the builder's current concepts and plans and are subject to change without notice. Substitution of materials shall be of equal or greater value. Actual usable floor space may vary from stated floor area. E. & O. E.