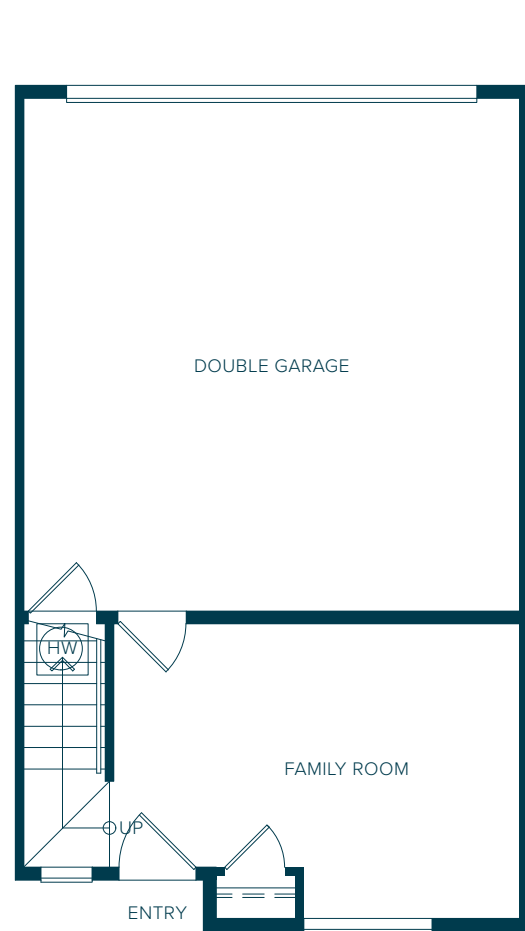


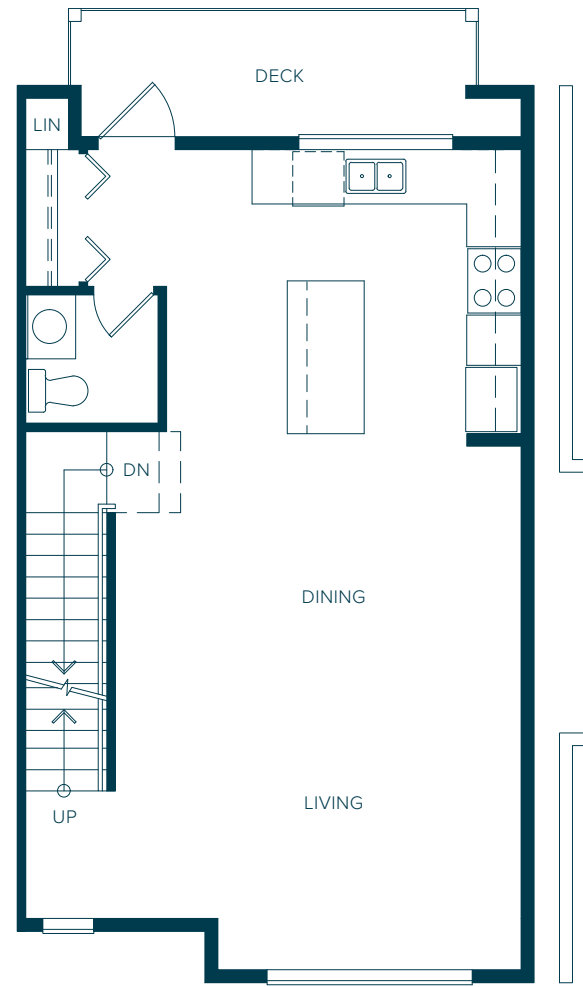
A

3 Bedroom
2.5 Bathroom
+ Family Room
1,595 – 1,694 s.f.

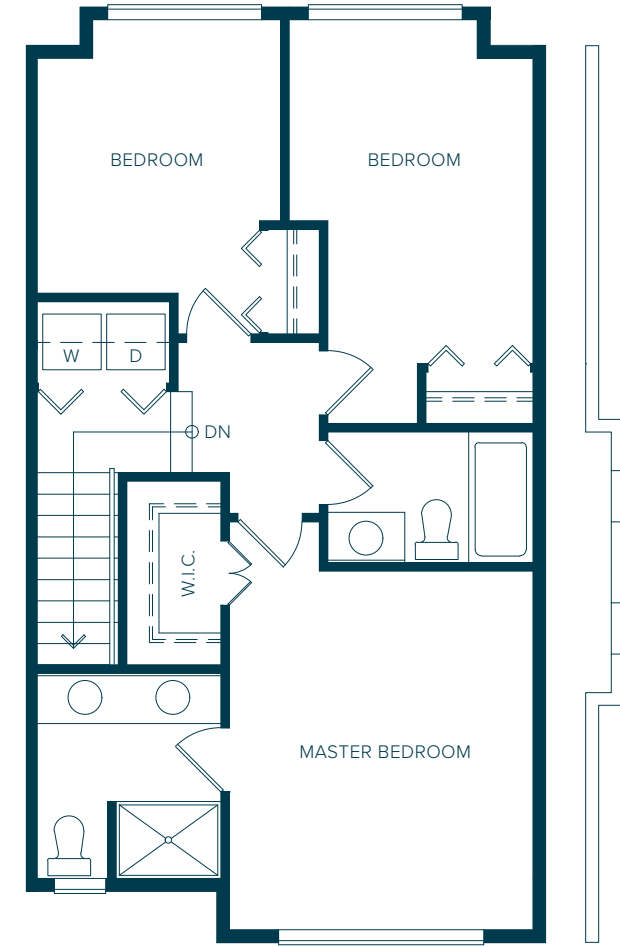
Spacious open layout with gorgeous island kitchen! There is even a window over the sink. BBQ Deck properly positioned off the kitchen and convenient main floor powder room make entertaining a breeze. Large master bedroom fits a King size bed with full walk-in closet and spa inspired ensuite with dual sinks make getting ready together easier than ever! Enjoy family time in the spacious and convenient family room.



LOWER
235 s.f.



MAIN
655 s.f.



UPPER
709 s.f.