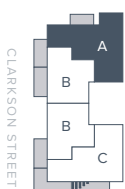
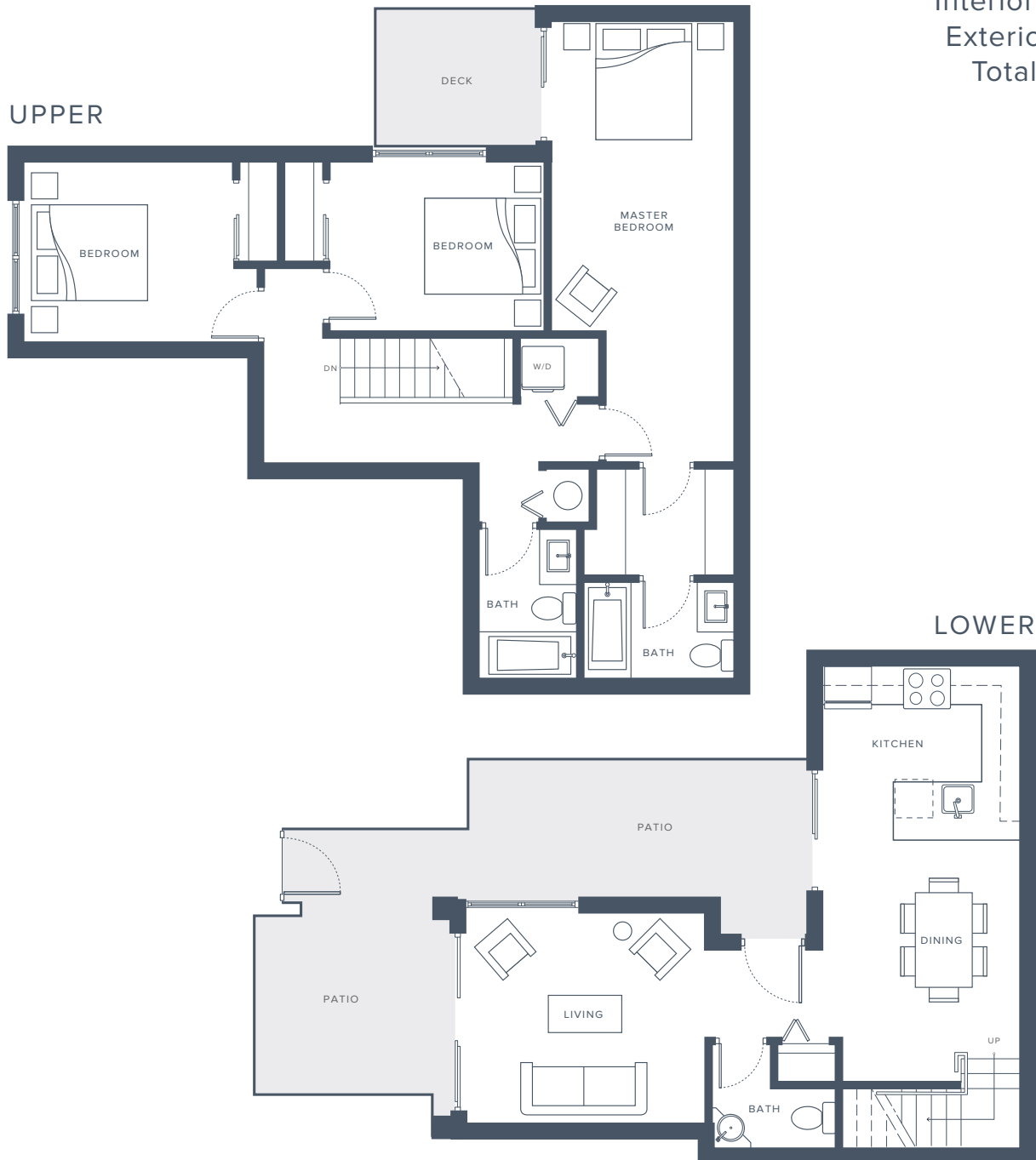


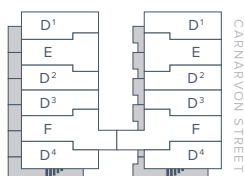
IRVING

# Plan Type A

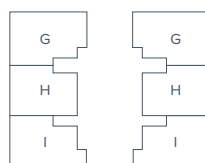
3 Bedroom + 2.5 Bathroom  
Interior 1,403 SF  
Exterior 356 SF  
Total 1,759 SF



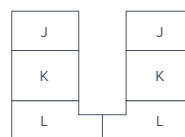
1ST FLOOR



MAIN FLOOR



5TH FLOOR



PENTHOUSE

218 Carnarvon Street  
New Westminster

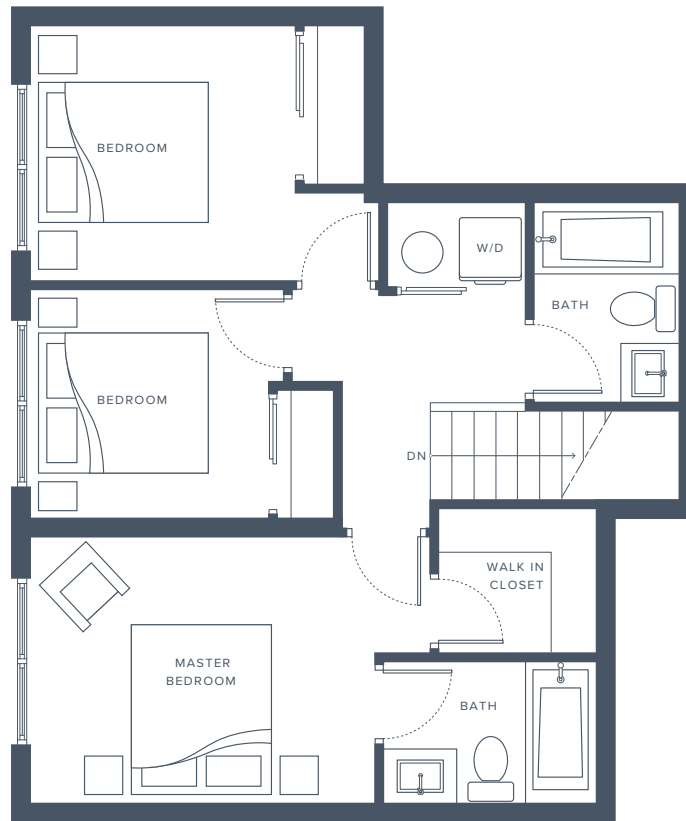
[www.irvingliving.ca](http://www.irvingliving.ca)

IRVING

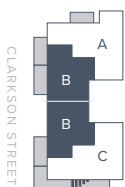
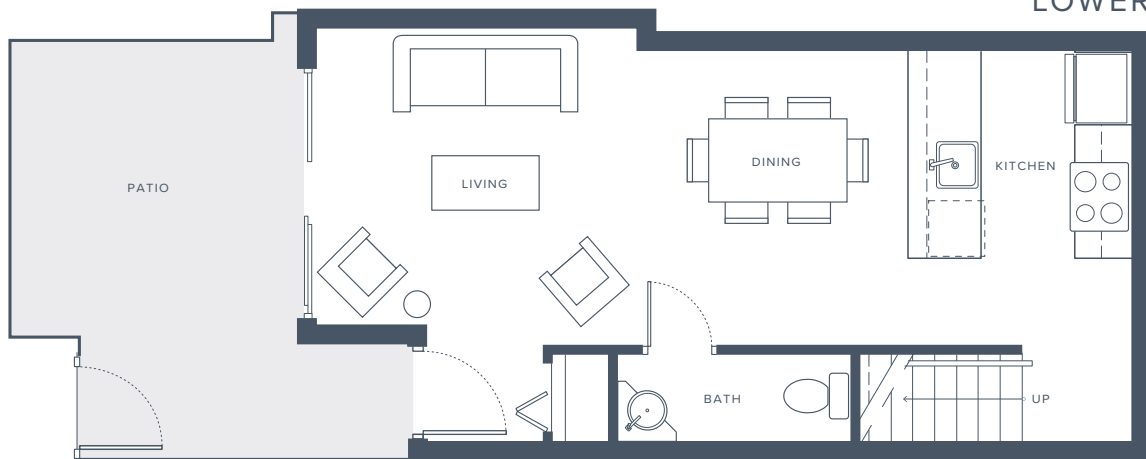
# Plan Type B

## UPPER

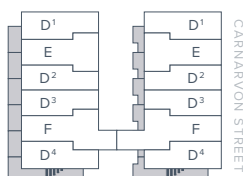
3 Bedroom + 2.5 Bathroom  
Interior 1,073 SF  
Exterior 169 SF  
Total 1,242 SF



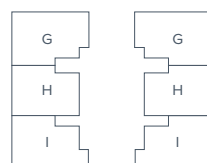
## LOWER



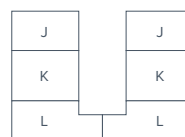
1ST FLOOR



MAIN FLOOR



5TH FLOOR



PENTHOUSE

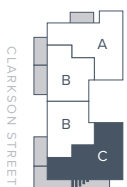
218 Carnarvon Street  
New Westminster

[www.irvingliving.ca](http://www.irvingliving.ca)

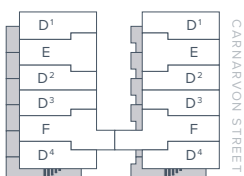
IRVING

# Plan Type C

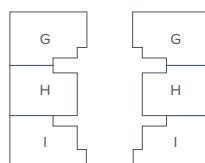
3 Bedroom + 2.5 Bathroom  
Interior 1,290 SF  
Total 1,290 SF



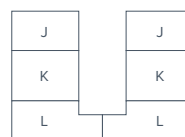
1ST FLOOR



MAIN FLOOR



5TH FLOOR



PENTHOUSE

218 Carnarvon Street  
New Westminster

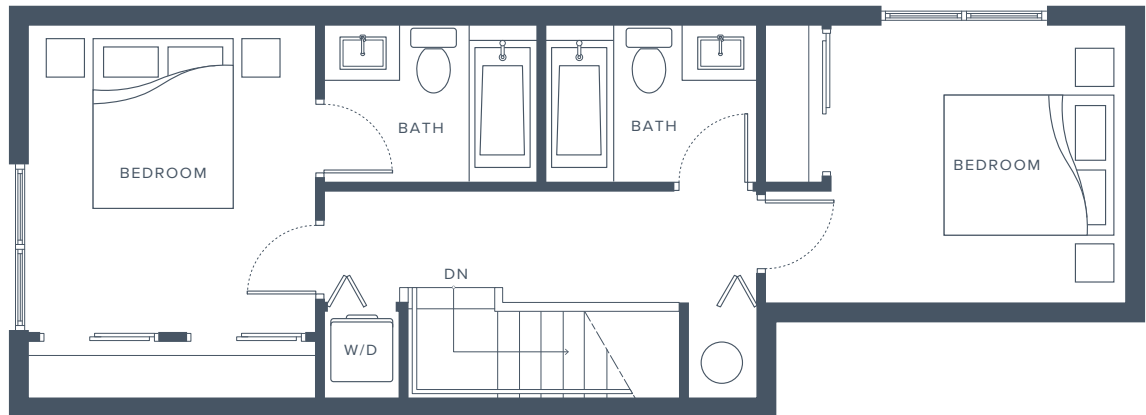
[www.irvingliving.ca](http://www.irvingliving.ca)

IRVING

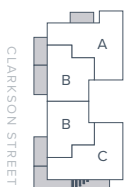
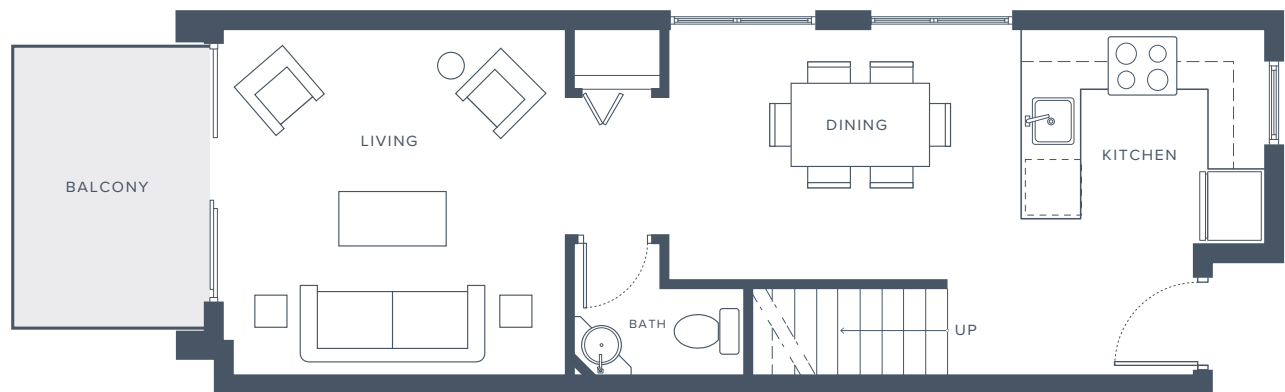
# Plan Type D<sup>1</sup>

2 Bedroom + 2.5 Bathroom  
Interior 1,074 - 1,080 SF  
Exterior 85 SF  
Total 1,159 - 1,165 SF

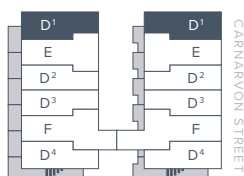
## UPPER



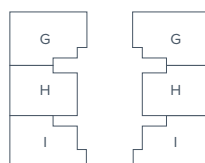
## LOWER



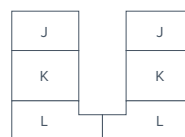
1ST FLOOR



MAIN FLOOR



5TH FLOOR



PENTHOUSE

218 Carnarvon Street  
New Westminster

[www.irvingliving.ca](http://www.irvingliving.ca)

IRVING

# Plan Type D<sup>2</sup>

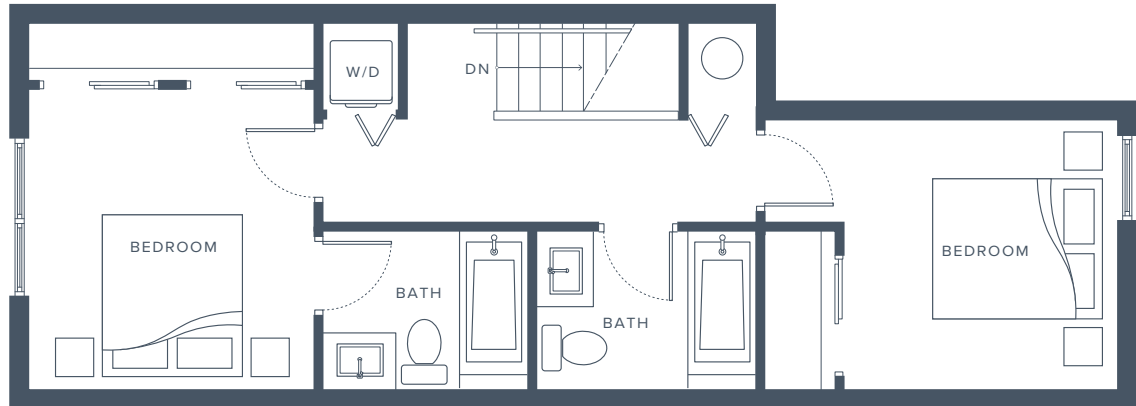
2 Bedroom + 2.5 Bathroom

Interior 991 - 997 SF

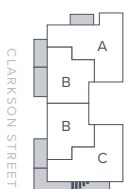
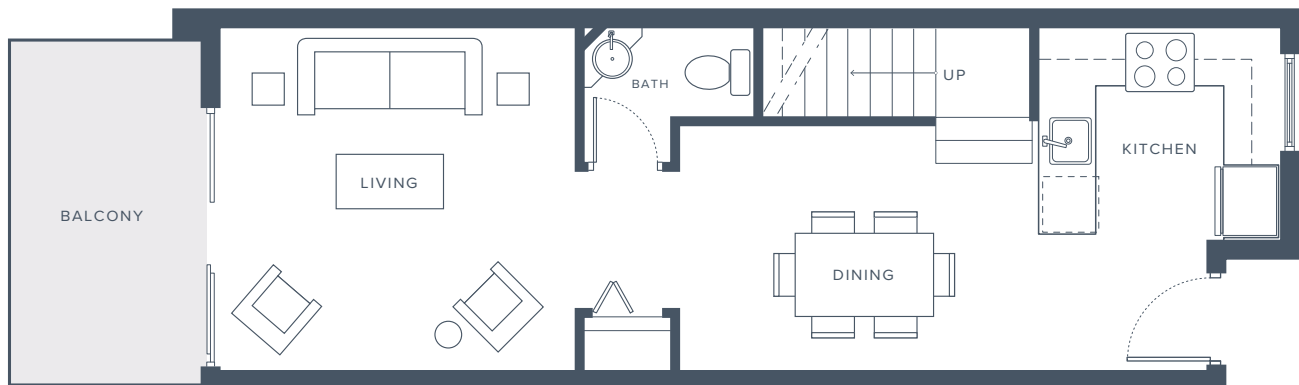
Exterior 85 SF

Total 1,076 - 1,082 SF

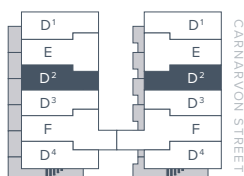
## UPPER



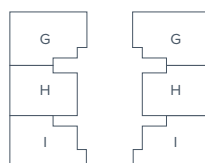
## LOWER



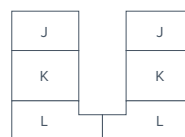
1ST FLOOR



MAIN FLOOR



5TH FLOOR



PENTHOUSE

218 Carnarvon Street  
New Westminster

[www.irvingliving.ca](http://www.irvingliving.ca)

IRVING

# Plan Type D<sup>3</sup>

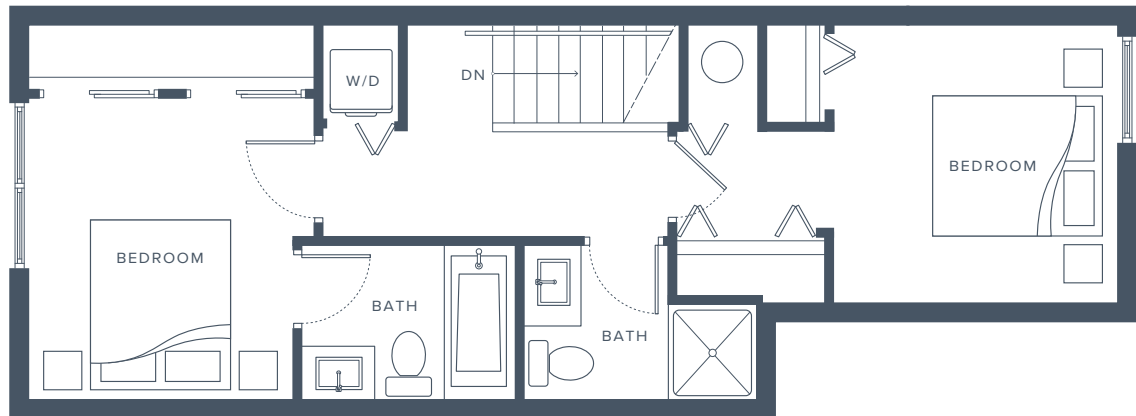
2 Bedroom + 2.5 Bathroom

Interior 990 - 996 SF

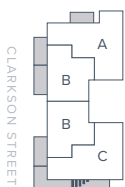
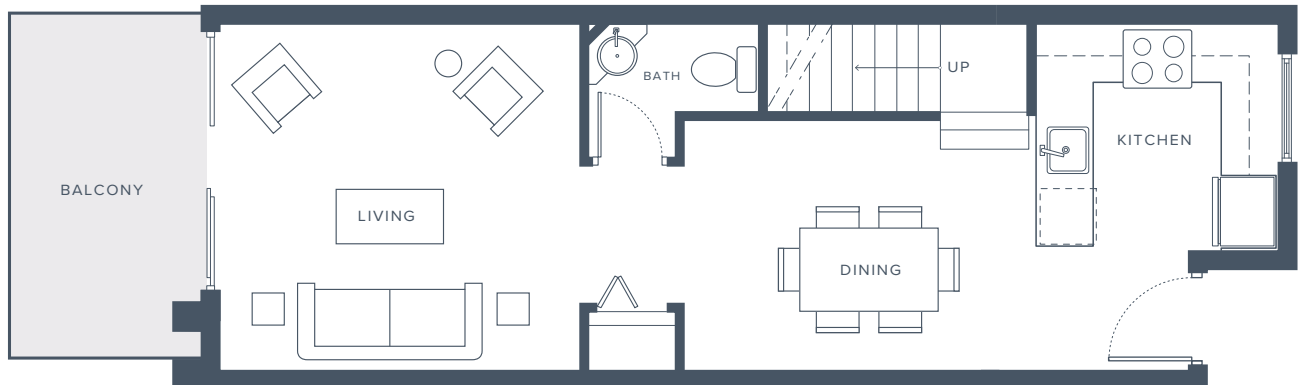
Exterior 85 SF

Total 1,075 - 1,081 SF

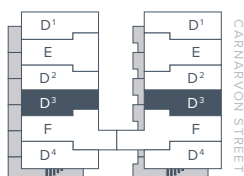
## UPPER



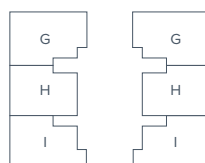
## LOWER



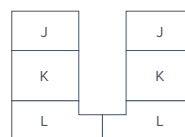
1ST FLOOR



MAIN FLOOR



5TH FLOOR



PENTHOUSE

218 Carnarvon Street  
New Westminster

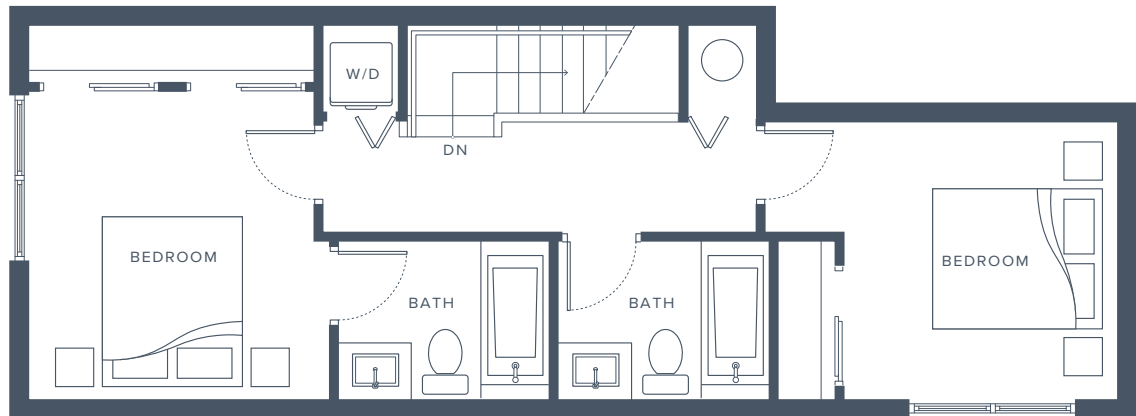
[www.irvingliving.ca](http://www.irvingliving.ca)

IRVING

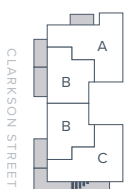
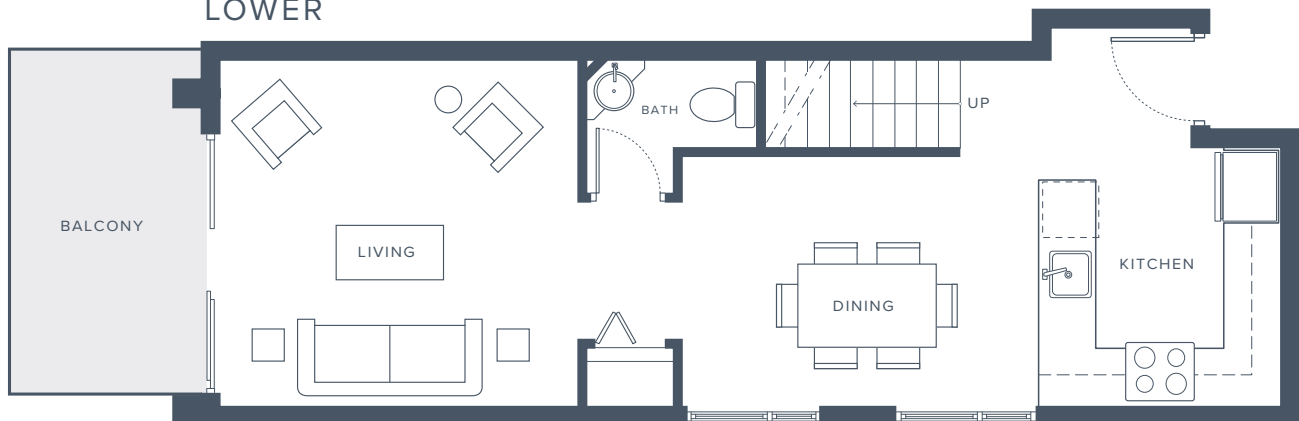
# Plan Type D<sup>4</sup>

2 Bedroom + 2.5 Bathroom  
Interior 1,081 - 1,084 SF  
Exterior 85 SF  
Total 1,166 - 1,169 SF

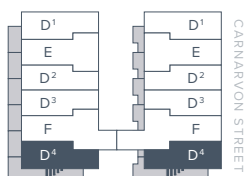
## UPPER



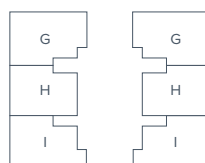
## LOWER



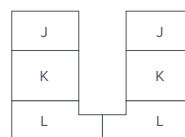
1ST FLOOR



MAIN FLOOR



5TH FLOOR



PENTHOUSE

218 Carnarvon Street  
New Westminster

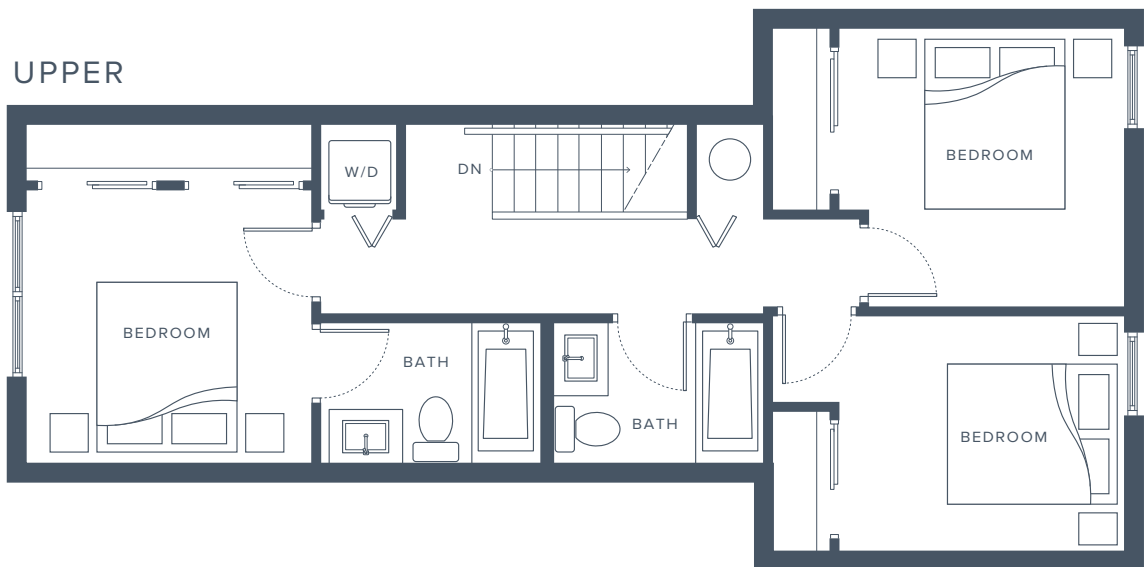
[www.irvingliving.ca](http://www.irvingliving.ca)

IRVING

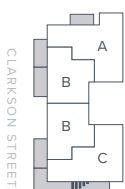
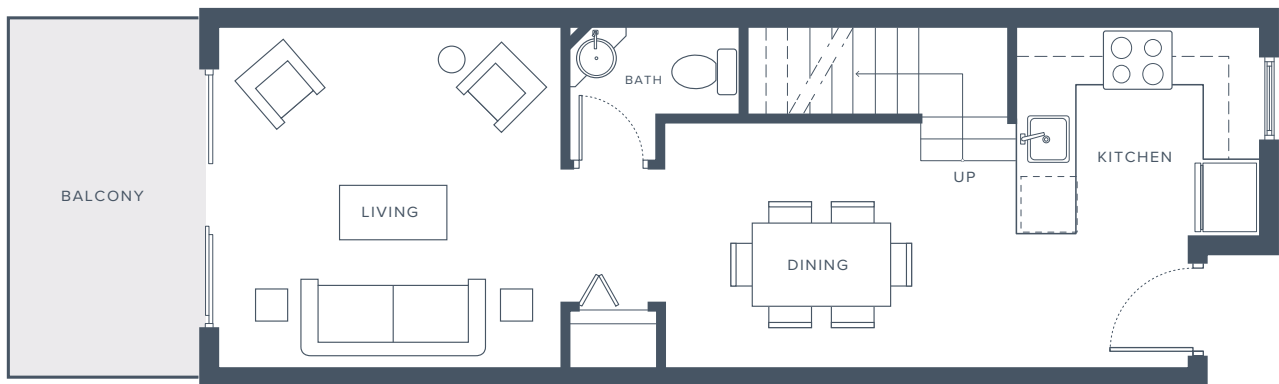
# Plan Type E

3 Bedroom + 2.5 Bathroom  
Interior 1,125 - 1,130 SF  
Exterior 89 SF  
Total 1,214 - 1,219 SF

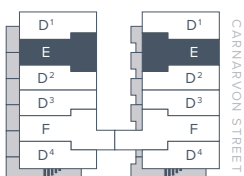
UPPER



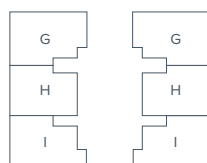
LOWER



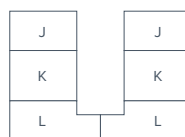
1ST FLOOR



MAIN FLOOR



5TH FLOOR



PENTHOUSE

218 Carnarvon Street  
New Westminster

[www.irvingliving.ca](http://www.irvingliving.ca)



IRVING

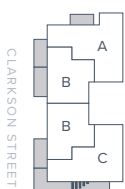
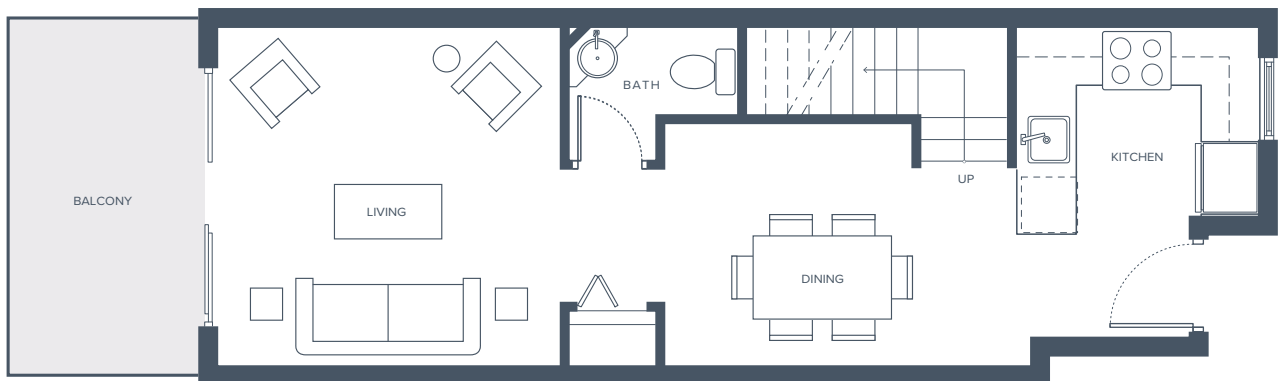
# Plan Type F

3 Bedroom + 2.5 Bathroom  
Interior 1,207 - 1,267 SF  
Exterior 90 SF  
Total 1,297 - 1,357 SF

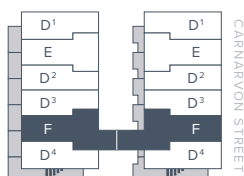
UPPER



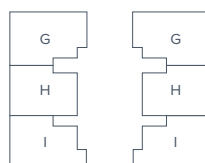
LOWER



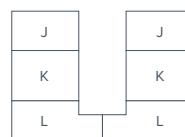
1ST FLOOR



MAIN FLOOR



5TH FLOOR



PENTHOUSE

218 Carnarvon Street  
New Westminster

[www.irvingliving.ca](http://www.irvingliving.ca)

IRVING

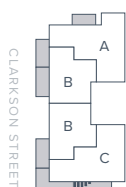
# Plan Type G

3 Bedroom + 2 Bathroom

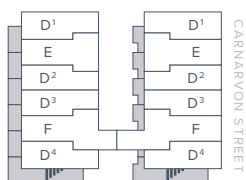
Interior 1,034 SF

Exterior 80 SF

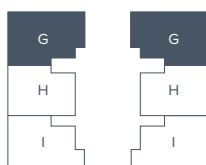
Total 1,114 SF



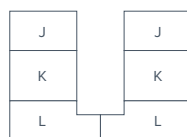
1ST FLOOR



MAIN FLOOR



5TH FLOOR



PENTHOUSE

218 Carnarvon Street  
New Westminster

[www.irvingliving.ca](http://www.irvingliving.ca)

IRVING

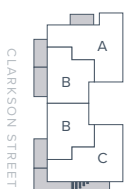
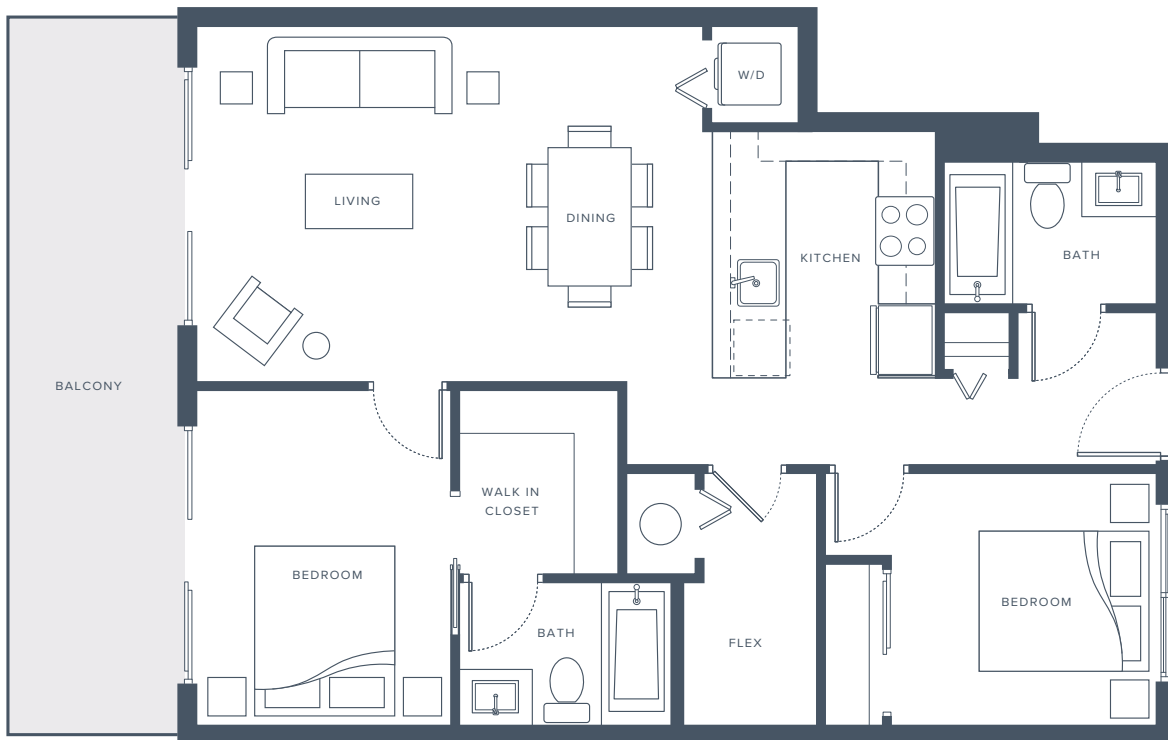
# Plan Type H

2 Bedroom + 2 Bathroom

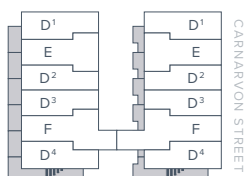
Interior 883 SF

Exterior 160 SF

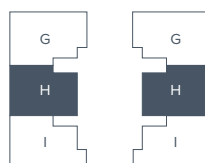
Total 1,043 SF



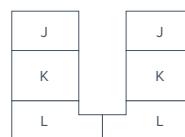
1ST FLOOR



MAIN FLOOR



5TH FLOOR



PENTHOUSE

218 Carnarvon Street  
New Westminster

[www.irvingliving.ca](http://www.irvingliving.ca)

IRVING

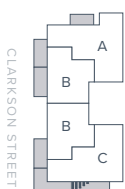
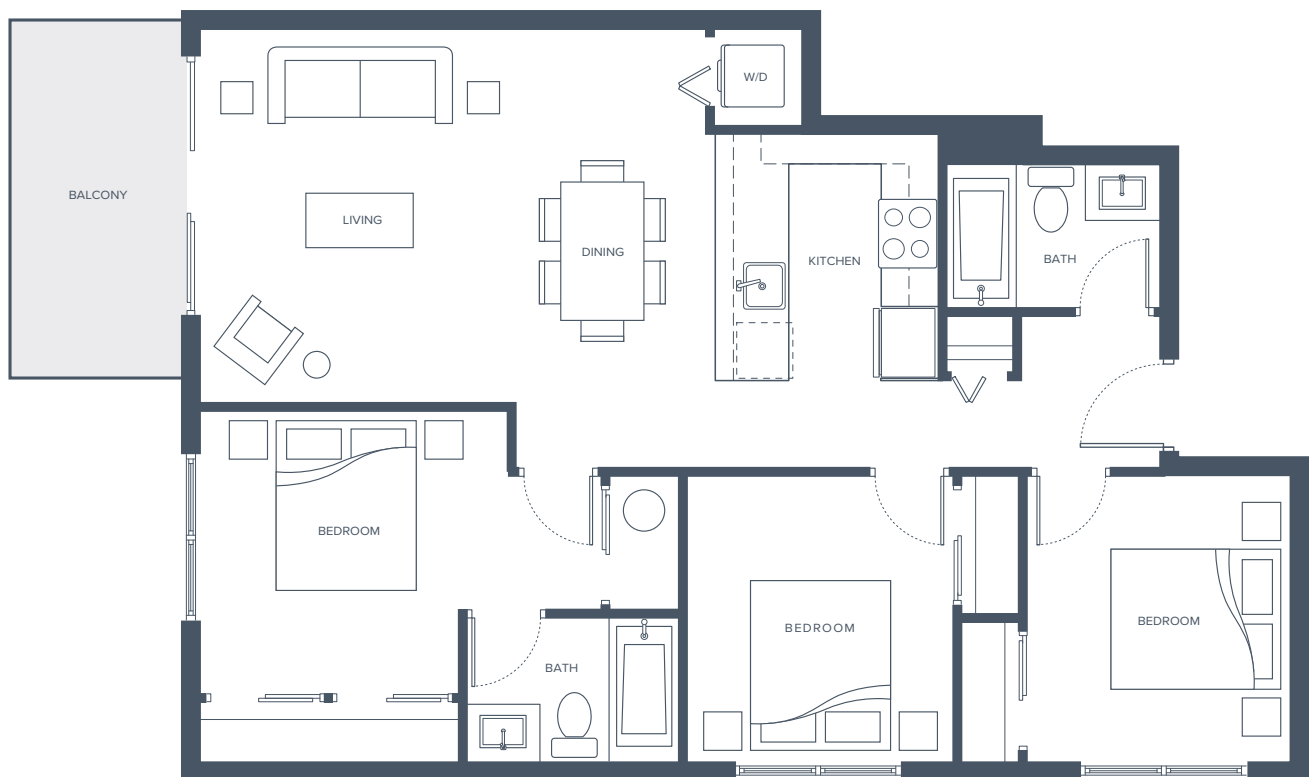
# Plan Type I

3 Bedroom + 2 Bathroom

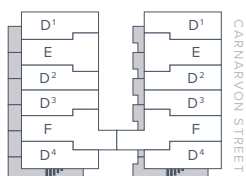
Interior 947 - 951 SF

Exterior 80 SF

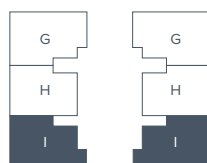
Total 1,027 - 1,031 SF



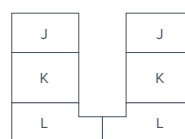
1ST FLOOR



MAIN FLOOR



5TH FLOOR



PENTHOUSE

218 Carnarvon Street  
New Westminster

[www.irvingliving.ca](http://www.irvingliving.ca)

IRVING

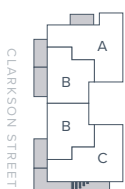
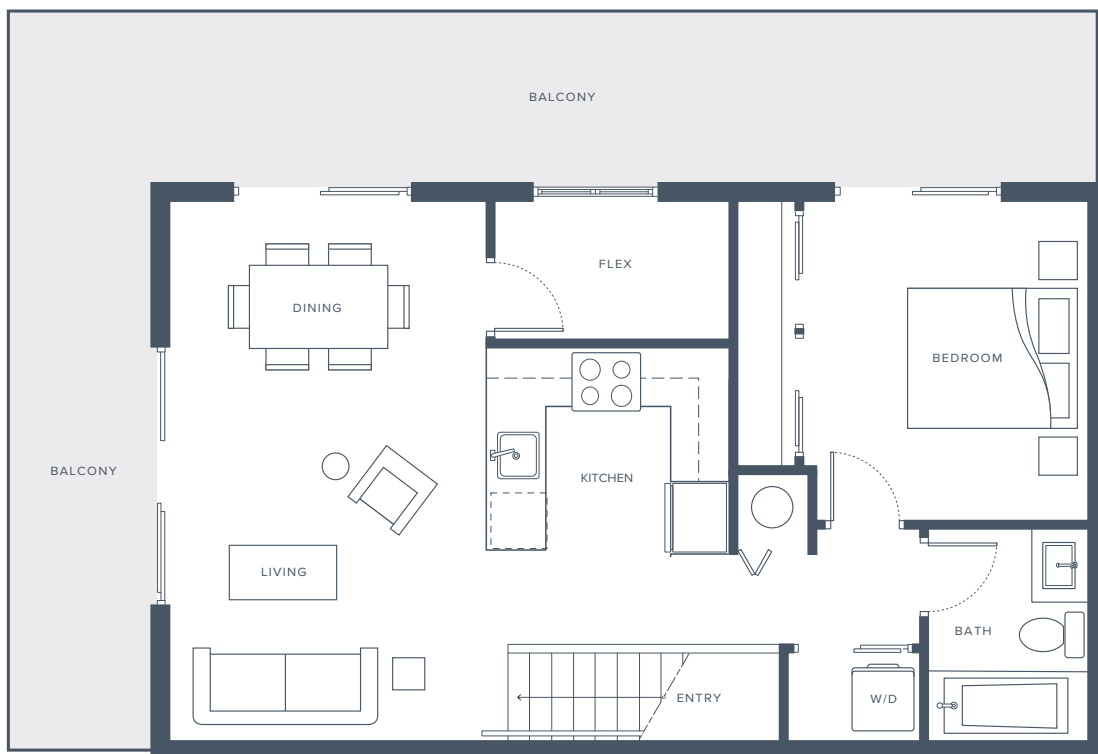
# Plan Type J

1 Bedroom + 1 Bathroom

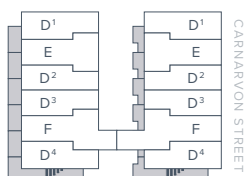
Interior 770 - 771 SF

Exterior 374 SF

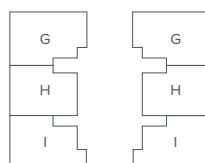
Total 1,144 - 1,145 SF



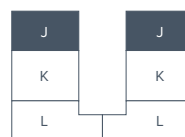
1ST FLOOR



MAIN FLOOR



5TH FLOOR



PENTHOUSE

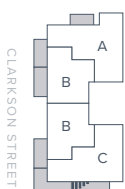
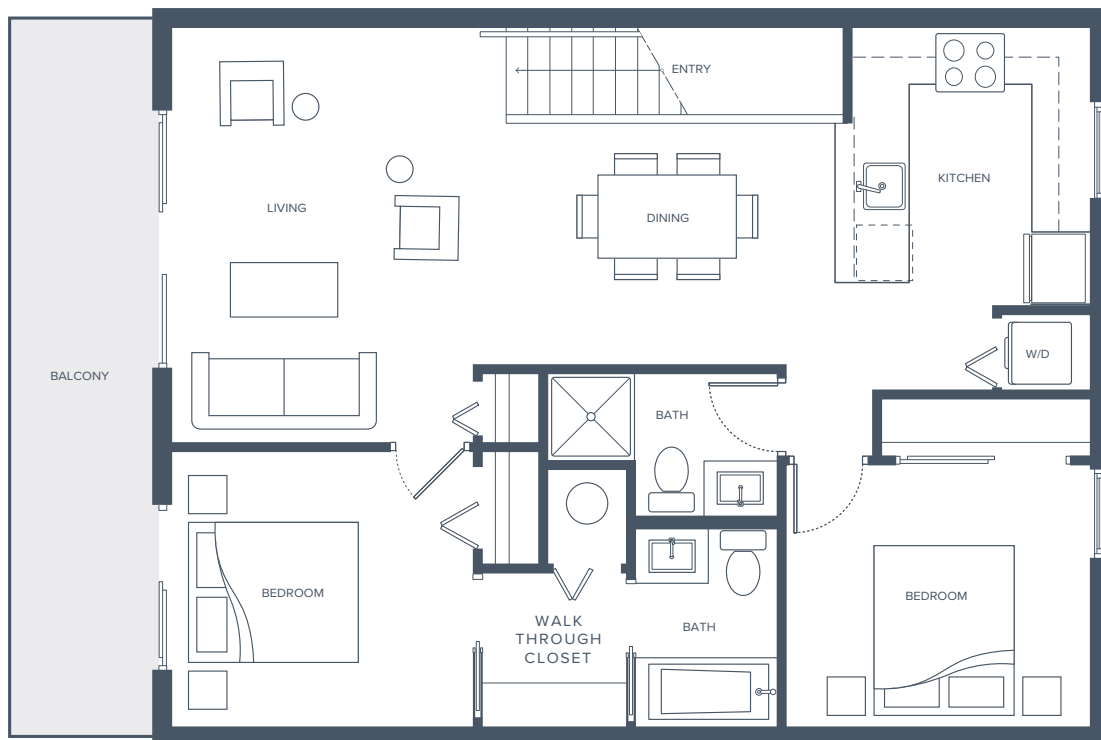
218 Carnarvon Street  
New Westminster

[www.irvingliving.ca](http://www.irvingliving.ca)

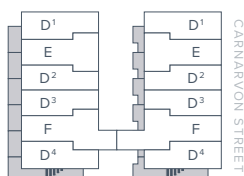
IRVING

# Plan Type K

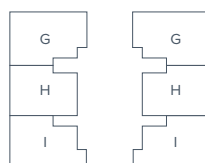
2 Bedroom + 2 Bathroom  
Interior 958 SF  
Exterior 143 SF  
Total 1,101 SF



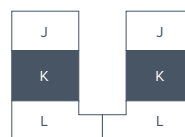
1ST FLOOR



MAIN FLOOR



5TH FLOOR



PENTHOUSE

218 Carnarvon Street  
New Westminster

[www.irvingliving.ca](http://www.irvingliving.ca)

IRVING

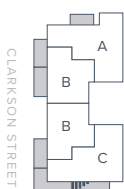
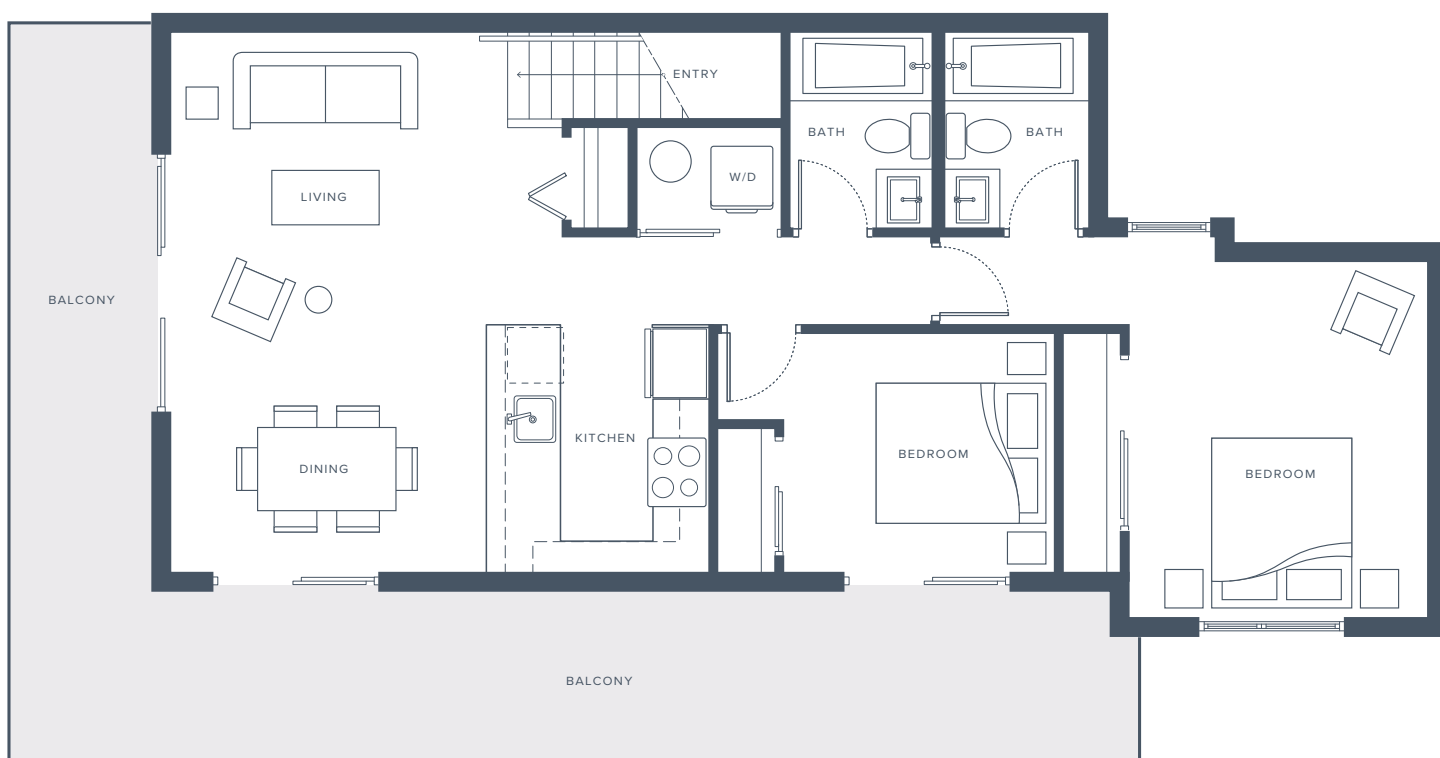
# Plan Type L

2 Bedroom + 2 Bathroom

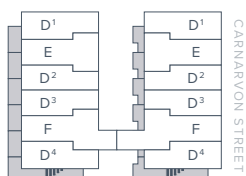
Interior 947 - 951 SF

Exterior 380 SF

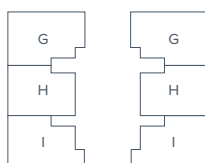
Total 1,327 - 1,331 SF



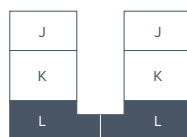
1ST FLOOR



MAIN FLOOR



5TH FLOOR



PENTHOUSE

218 Carnarvon Street  
New Westminster

[www.irvingliving.ca](http://www.irvingliving.ca)