

MENKES

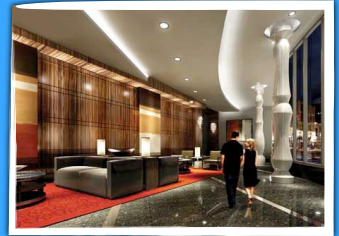
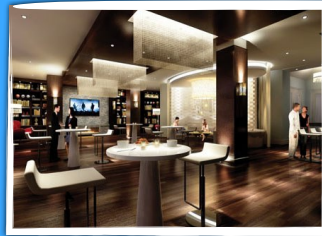


GIBSON SQUARE

Gibson Square is located in the heart of North York, on Yonge Street. The complex is minutes away to an array of shops, restaurants, theatres, and entertainment venues. With easy access to the subway and highway 401, Downtown Toronto and the rest of the GTA are close by.

As residents step into the elegant and luxurious lobby, they are greeted by a sophisticated black granite staircase, leading up to the second floor Gibson Club, home to a slew of amenities including two party rooms, a fitness centre, swimming pool, billiards room, a home theatre, and an outdoor rooftop garden.

PHOTO GALLERY



FLOOR PLANS

Please see the next pages for floor plan layouts.

Name	SQFT	View	Price	Floors	Balcony	Locker	Parking
Apollo	567		\$316,990		Yes	No	No
Stratos	588		\$332,490		Yes	No	No
Orion	595		\$336,490		Yes	No	No
Vista	681		\$390,490		Yes	No	No
Skyline	691		\$405,490		Yes	No	No
Venus	698		\$381,490		Yes	No	No
Breeze	712		\$402,490		Yes	No	No
Luna	813		\$437,490		Yes	No	No
Juno	814		\$442,490		Yes	No	No
Starview	819		\$437,490		Yes	No	No
Jupiter	841		\$467,490		Yes	No	No
Panorama	858		\$446,490		Yes	No	No
Azure	873		\$473,490		Yes	No	No
Pinnacle	893		\$473,490		Yes	No	No
Solara	920		\$506,490		Yes	No	No
Saturn	997				Yes	No	No
Infinity	998		\$555,490		Yes	No	No

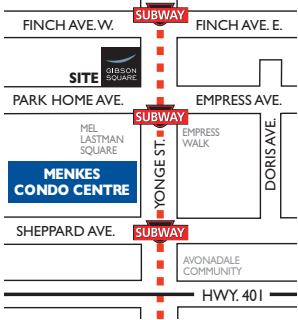
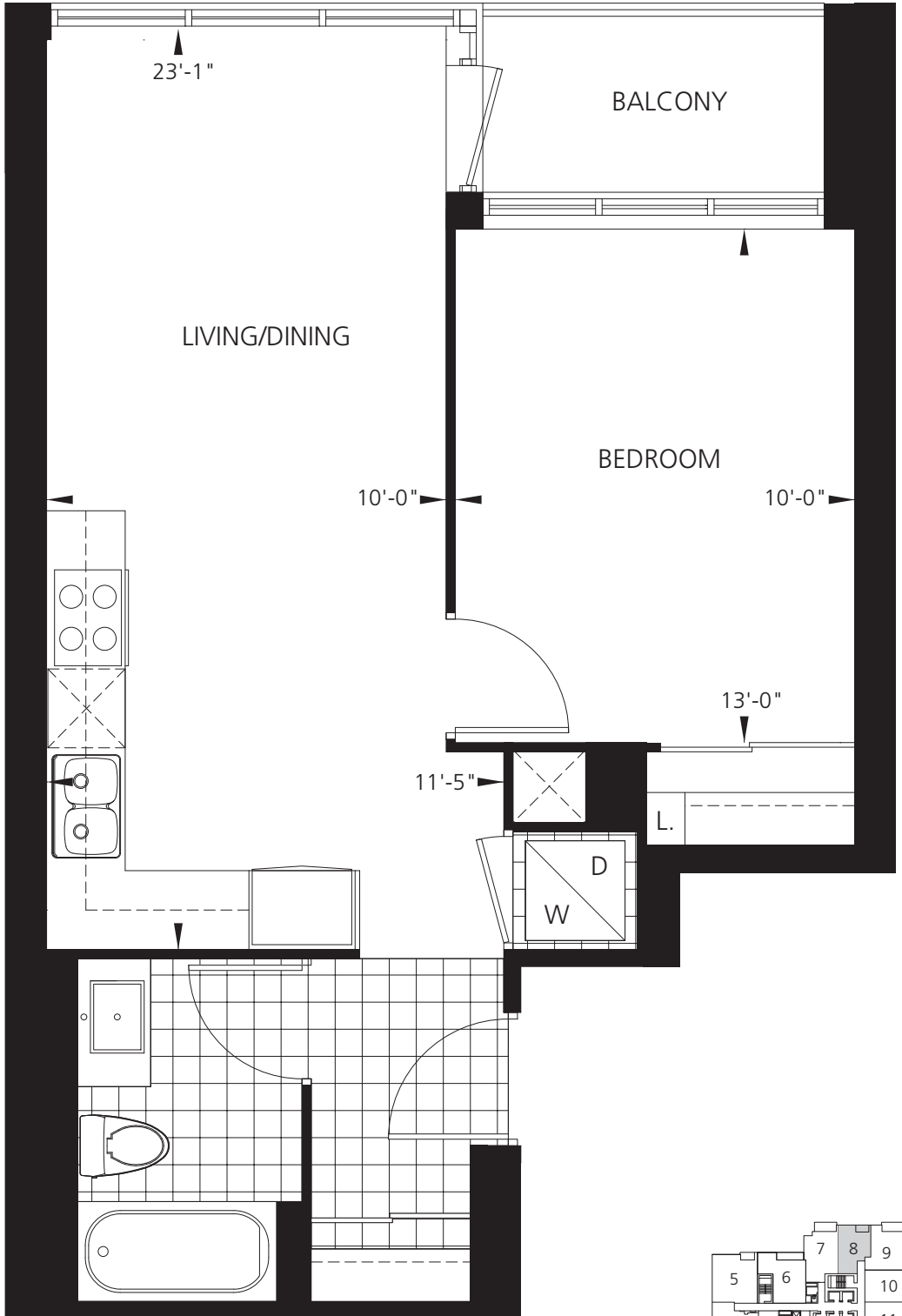


Apollo

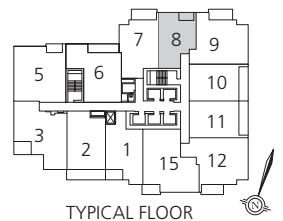
567 sq.ft. - 1 Bedroom Residence



- North York City Centre's most desirable condominiums with direct underground subway access
- 2 spectacular glass and steel towers soaring 42 storeys in height
- Modern classic 2 storey lobby with 24 hour Concierge
- 20,000 sq. ft. Gibson Club with full recreation centre including indoor swimming pool and roof garden
- Direct underground access to Empress Walk Shopping Centre including Loblaws, restaurants and cinemas



Menkes New Condo Centre
 4954 Yonge Street, south of Mel Lastman Square, on the west side.
Hours:
 Monday to Thursday 12 noon to 6 pm
 Friday, Saturday, Sunday and holidays 12 noon to 5 pm
Tel: 416.730.9722



The dimensions shown on this plan are approximate only. Actual useable floor space within the unit may vary from any stated floor areas or dimensions on this plan. For more information on the method used for calculating the floor area of any unit, reference should be made to Builder Bulletin No. 22 published by Tarion.

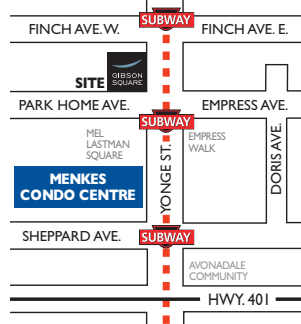


Stratos

588 sq.ft. - 1 Bedroom Residence



- North York City Centre's most desirable condominiums with direct underground subway access
- 2 spectacular glass and steel towers soaring 42 storeys in height
- Modern classic 2 storey lobby with 24 hour Concierge
- 20,000 sq. ft. Gibson Club with full recreation centre including indoor swimming pool and roof garden
- Direct underground access to Empress Walk Shopping Centre including Loblaws, restaurants and cinemas



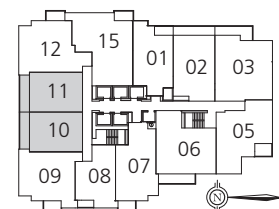
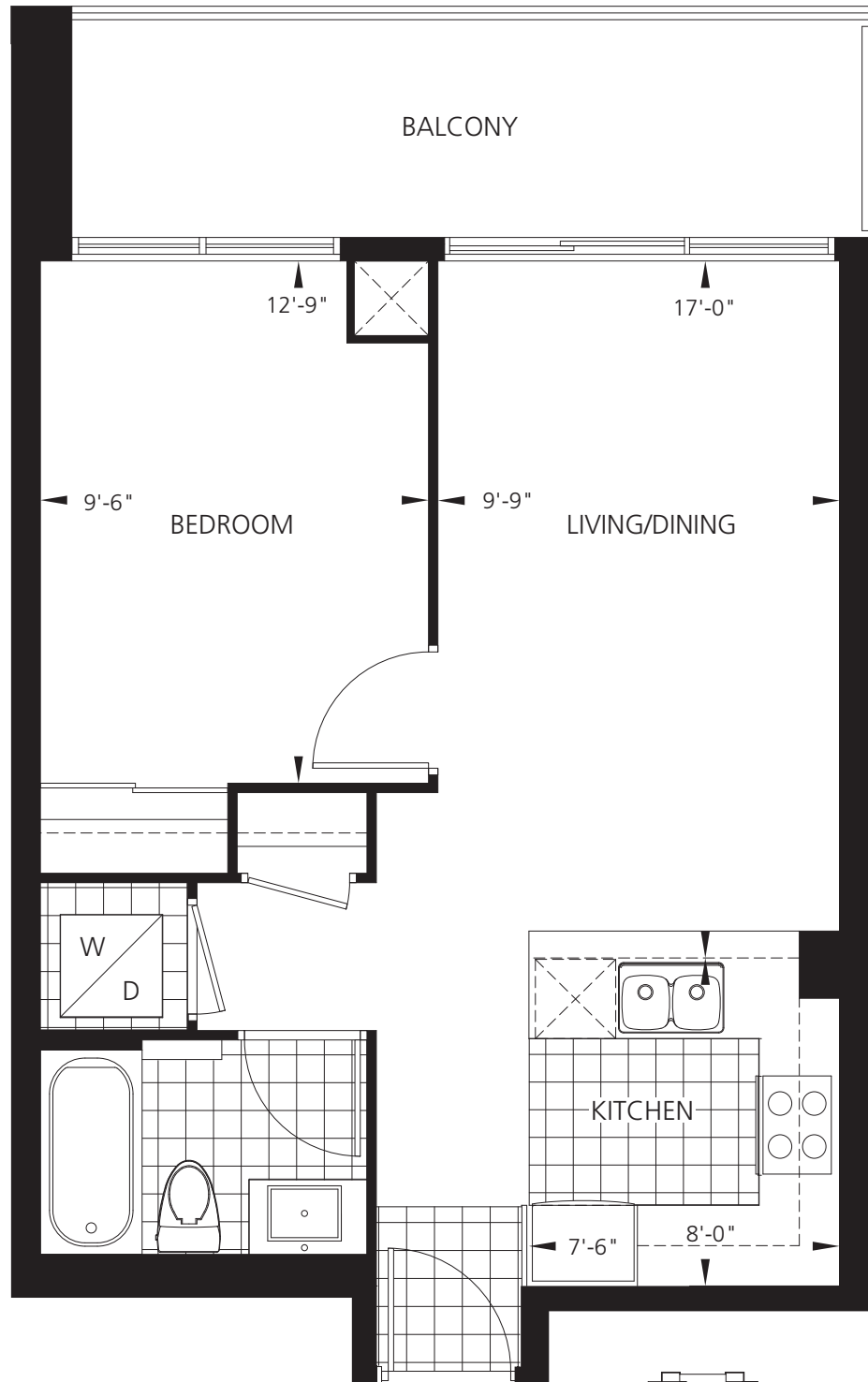
Condo Centre Hours:

Monday to Thursday
12 noon to 6 pm
Friday, Saturday, Sunday and holidays
12 noon to 5 pm

Tel: 416.730.9722



menkes.com



TYPICAL FLOOR



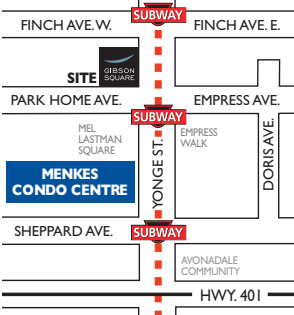
Orion

595 sq.ft. - 1 Bedroom Residence



TOWER TWO

- North York City Centre's most desirable condominiums with direct underground subway access
- 2 spectacular glass and steel towers soaring 42 storeys in height
- Modern classic 2 storey lobby with 24 hour Concierge
- 20,000 sq. ft. Gibson Club with full recreation centre including indoor swimming pool and roof garden
- Direct underground access to Empress Walk Shopping Centre including Loblaws, restaurants and cinemas



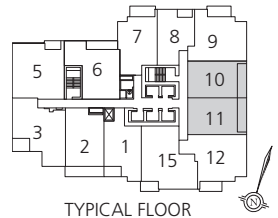
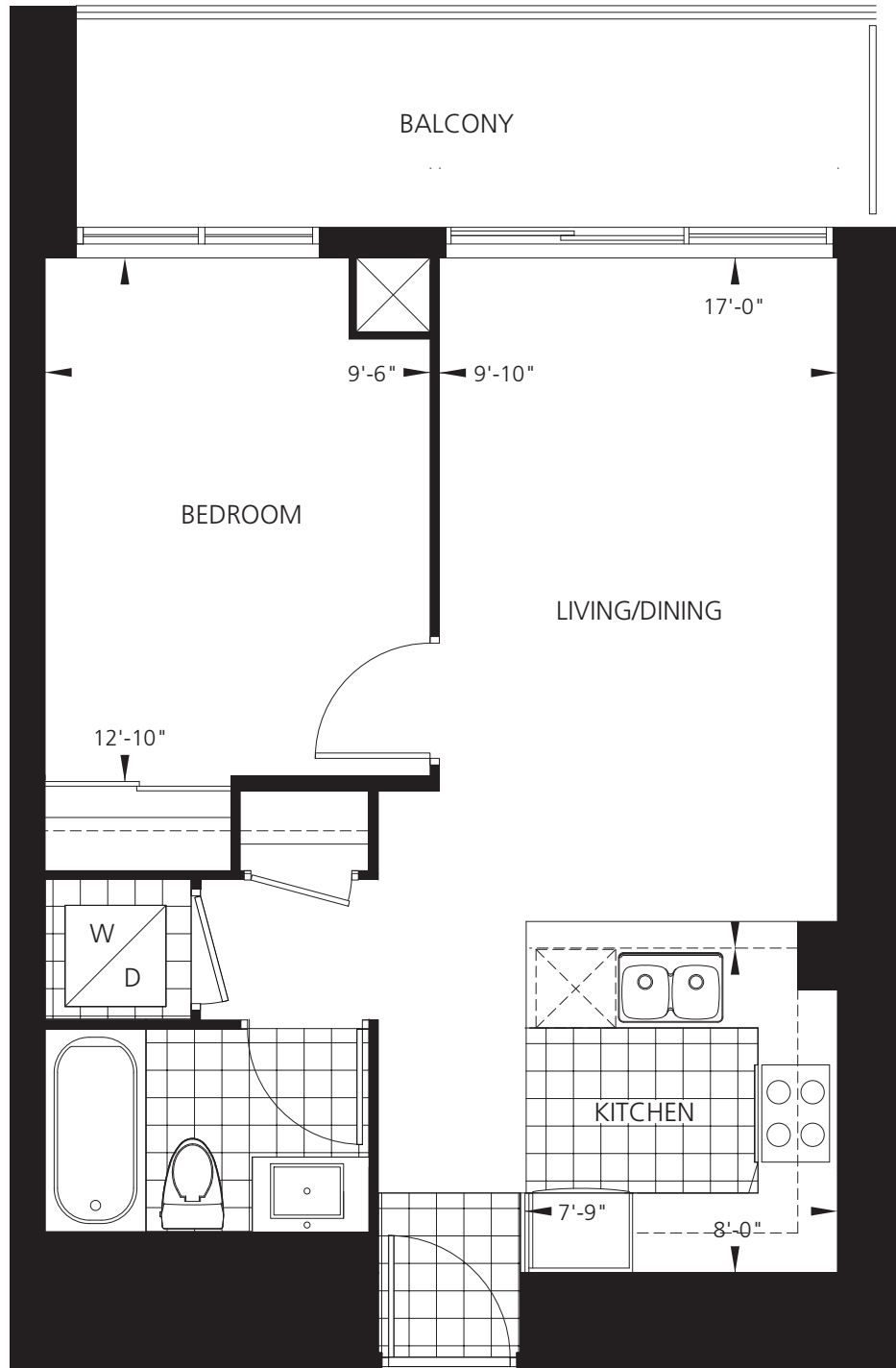
Menkes New Condo Centre
4954 Yonge Street, south of Mel Lastman Square, on the west side.

Hours:
Monday to Thursday 12 noon to 6 pm
Friday, Saturday, Sunday and holidays 12 noon to 5 pm

Tel: 416.730.9722



menkes.com



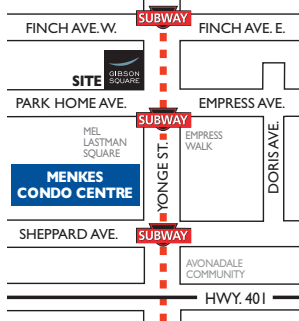


Vista

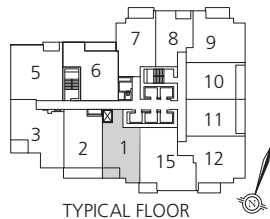
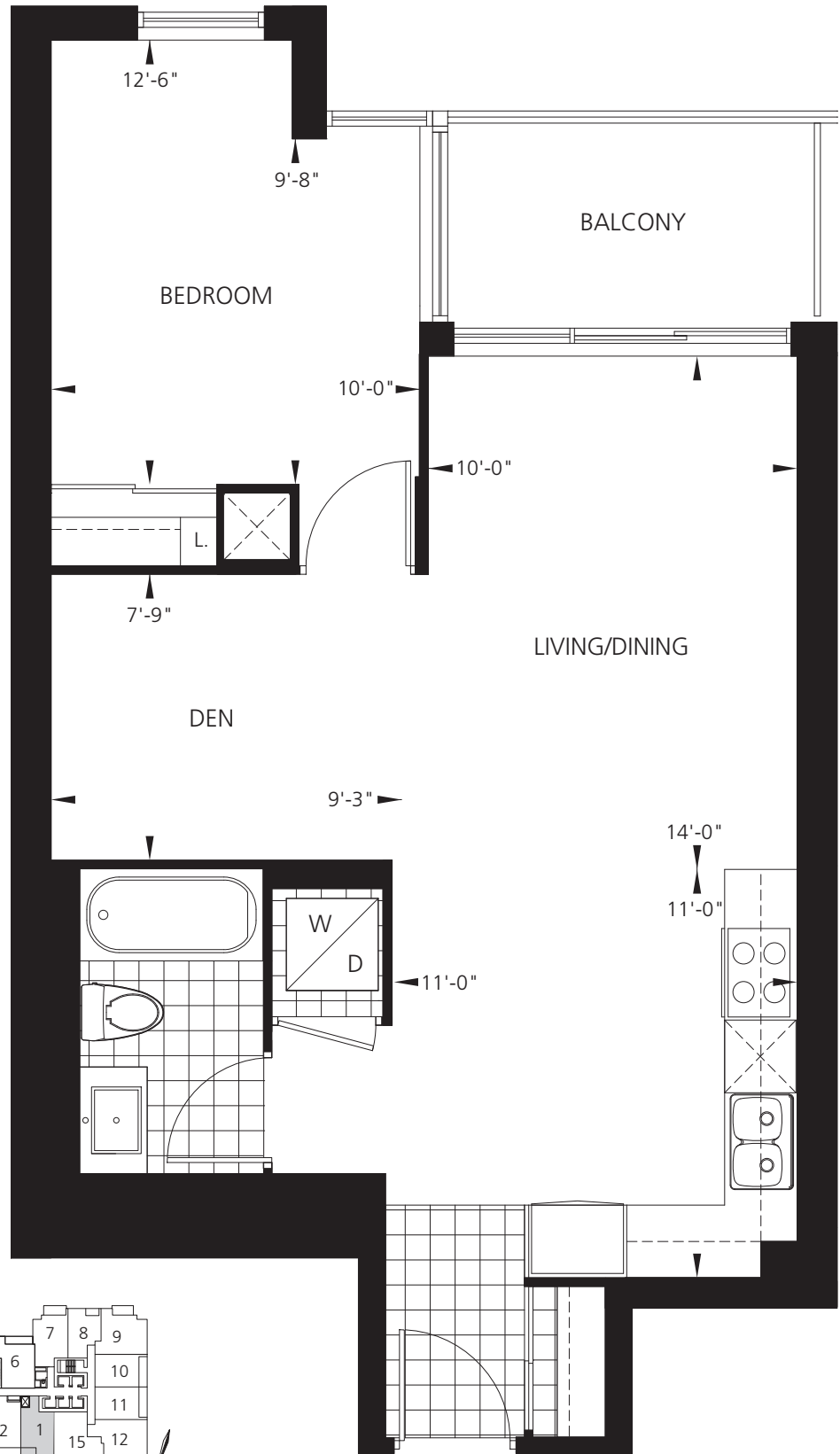
681 sq.ft. - 1 Bedroom Plus Den Residence



- North York City Centre's most desirable condominiums with direct underground subway access
- 2 spectacular glass and steel towers soaring 42 storeys in height
- Modern classic 2 storey lobby with 24 hour Concierge
- 20,000 sq. ft. Gibson Club with full recreation centre including indoor swimming pool and roof garden
- Direct underground access to Empress Walk Shopping Centre including Loblaws, restaurants and cinemas



Menkes New Condo Centre
 4954 Yonge Street, south of Mel Lastman Square, on the west side.
Hours:
 Monday to Thursday 12 noon to 6 pm
 Friday, Saturday, Sunday and holidays
 12 noon to 5 pm
Tel: 416.730.9722





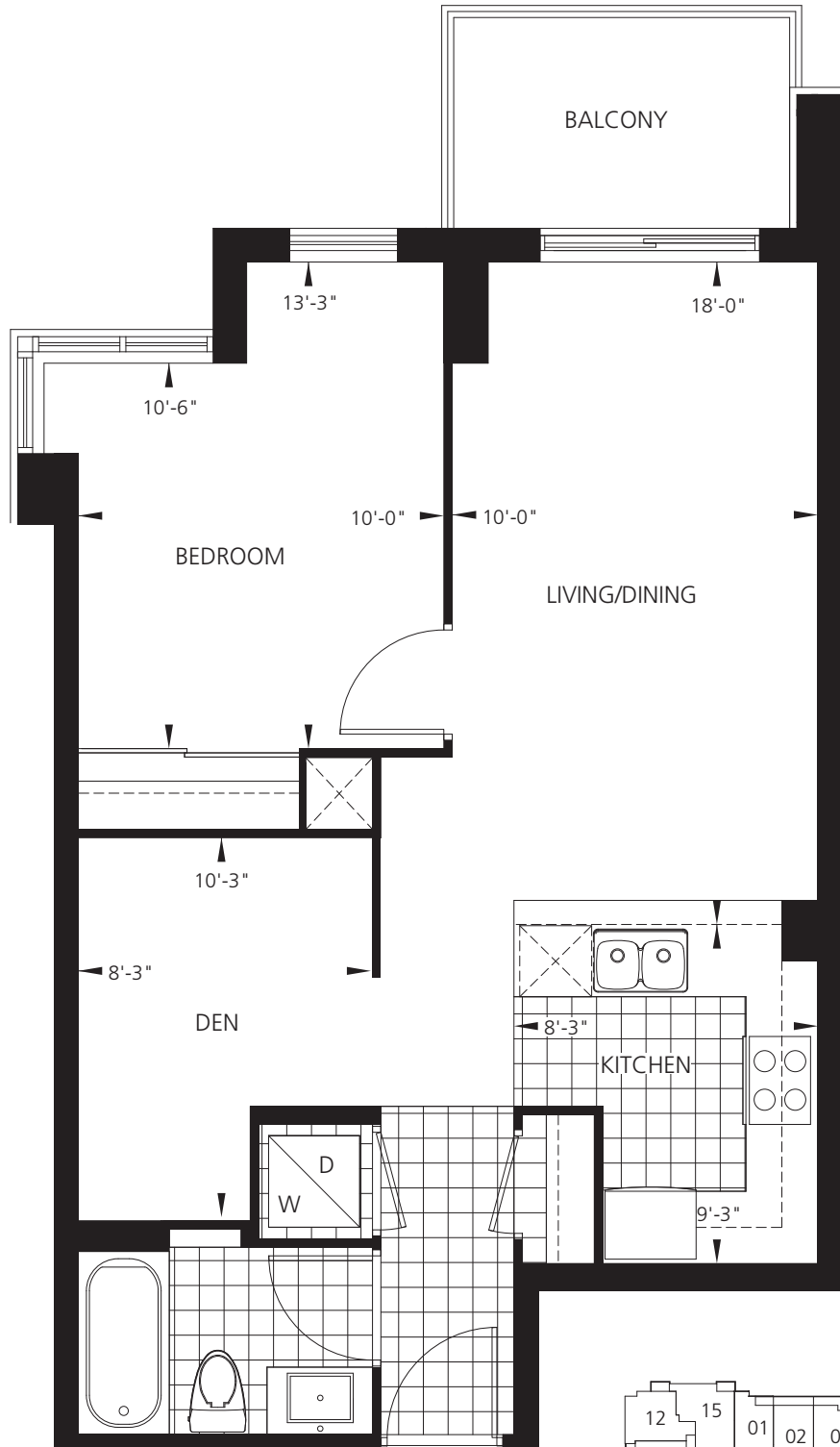
Skyline

691 sq.ft. - 1 Bedroom Plus Den Residence

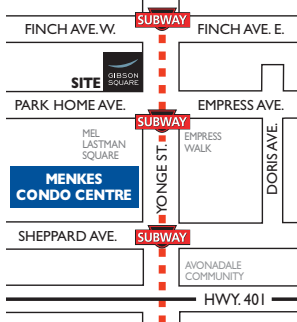
GIBSON
SQUARE



- North York City Centre's most desirable condominiums with direct underground subway access
- 2 spectacular glass and steel towers soaring 42 storeys in height
- Modern classic 2 storey lobby with 24 hour Concierge
- 20,000 sq. ft. Gibson Club with full recreation centre including indoor swimming pool and roof garden
- Direct underground access to Empress Walk Shopping Centre including Loblaws, restaurants and cinemas



TYPICAL FLOOR



Condo Centre Hours:

Monday to Thursday
12 noon to 6 pm
Friday, Saturday, Sunday and holidays
12 noon to 5 pm

Tel: 416.730.9722



menkes.com

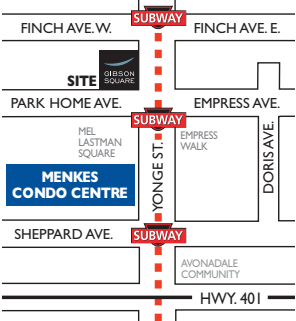


Venus

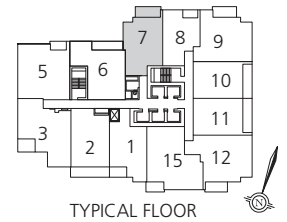
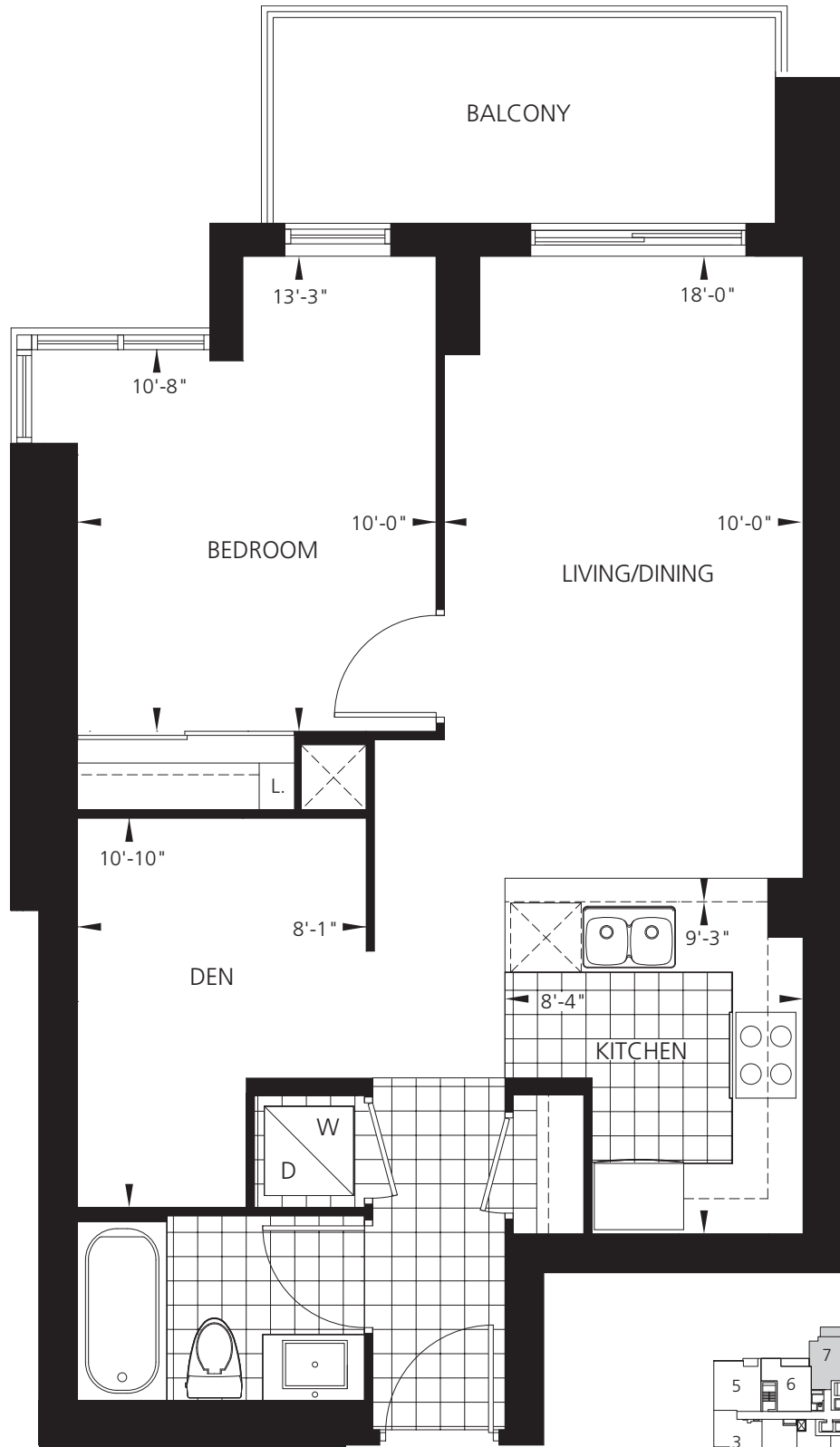
698 sq.ft. - 1 Bedroom Plus Den Residence



- North York City Centre's most desirable condominiums with direct underground subway access
- 2 spectacular glass and steel towers soaring 42 storeys in height
- Modern classic 2 storey lobby with 24 hour Concierge
- 20,000 sq. ft. Gibson Club with full recreation centre including indoor swimming pool and roof garden
- Direct underground access to Empress Walk Shopping Centre including Loblaws, restaurants and cinemas



Menkes New Condo Centre
 4954 Yonge Street, south of Mel Lastman Square, on the west side.
Hours:
 Monday to Thursday 12 noon to 6 pm
 Friday, Saturday, Sunday and holidays 12 noon to 5 pm
Tel: 416.730.9722



The dimensions shown on this plan are approximate only. Actual useable floor space within the unit may vary from any stated floor areas or dimensions on this plan. For more information on the method used for calculating the floor area of any unit, reference should be made to Builder Bulletin No. 22 published by Tarion.

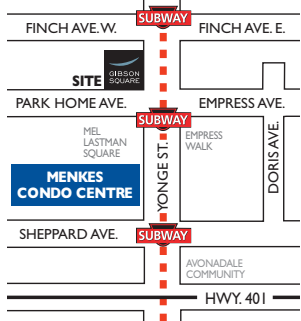


Breeze

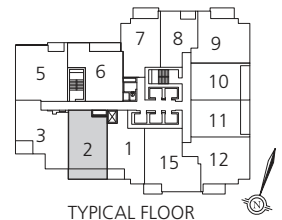
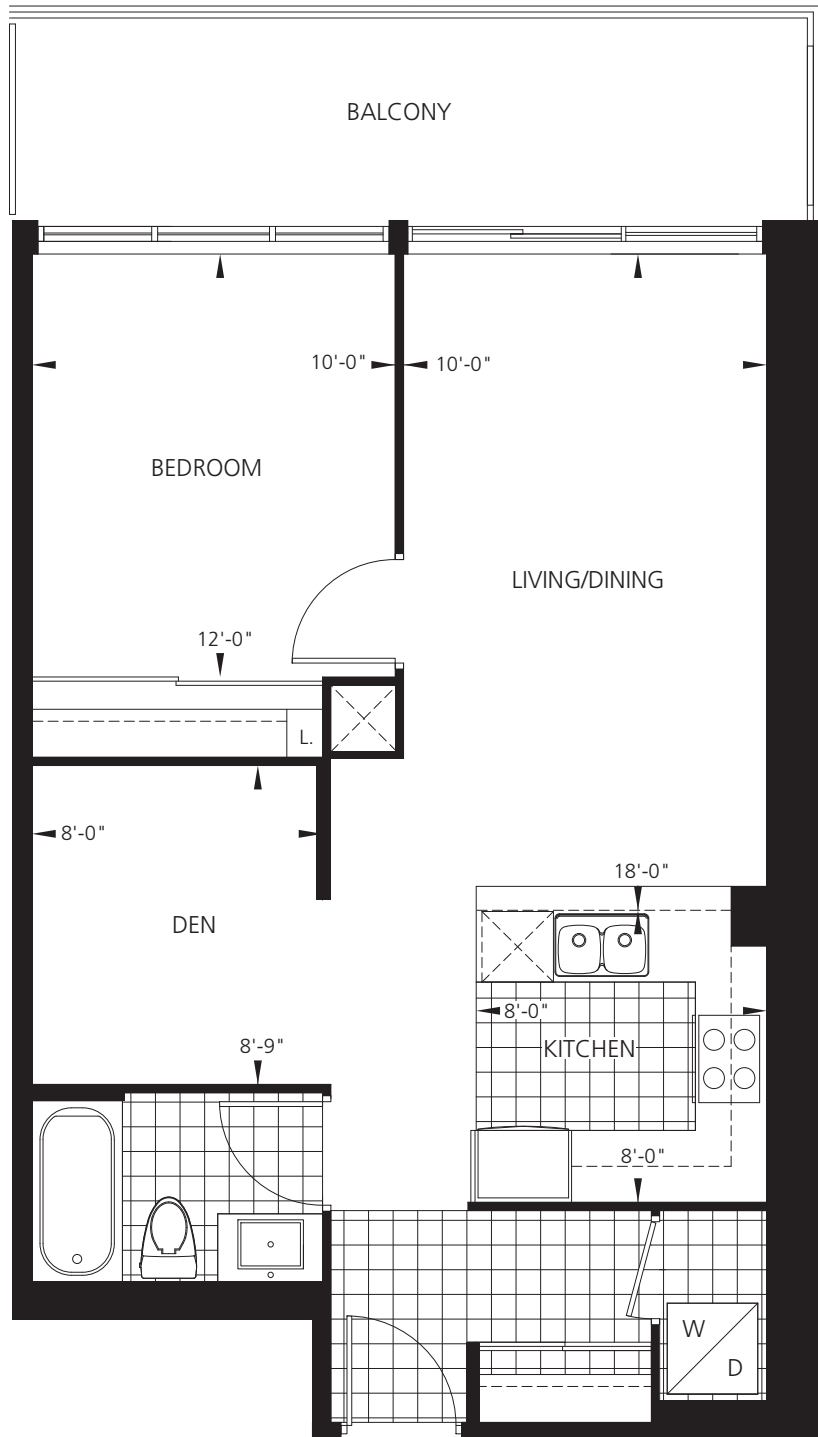
712 sq.ft. - 1 Bedroom Plus Den Residence



- North York City Centre's most desirable condominiums with direct underground subway access
- 2 spectacular glass and steel towers soaring 42 storeys in height
- Modern classic 2 storey lobby with 24 hour Concierge
- 20,000 sq. ft. Gibson Club with full recreation centre including indoor swimming pool and roof garden
- Direct underground access to Empress Walk Shopping Centre including Loblaws, restaurants and cinemas



Menkes New Condo Centre
 4954 Yonge Street, south of Mel Lastman Square, on the west side.
Hours:
 Monday to Thursday 12 noon to 6 pm
 Friday, Saturday, Sunday and holidays 12 noon to 5 pm
Tel: 416.730.9722



The dimensions shown on this plan are approximate only. Actual useable floor space within the unit may vary from any stated floor areas or dimensions on this plan. For more information on the method used for calculating the floor area of any unit, reference should be made to Builder Bulletin No. 22 published by Tarion.



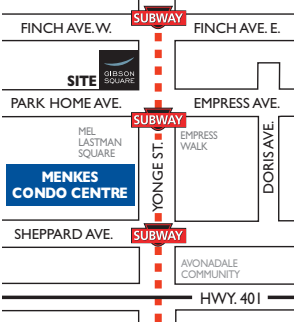
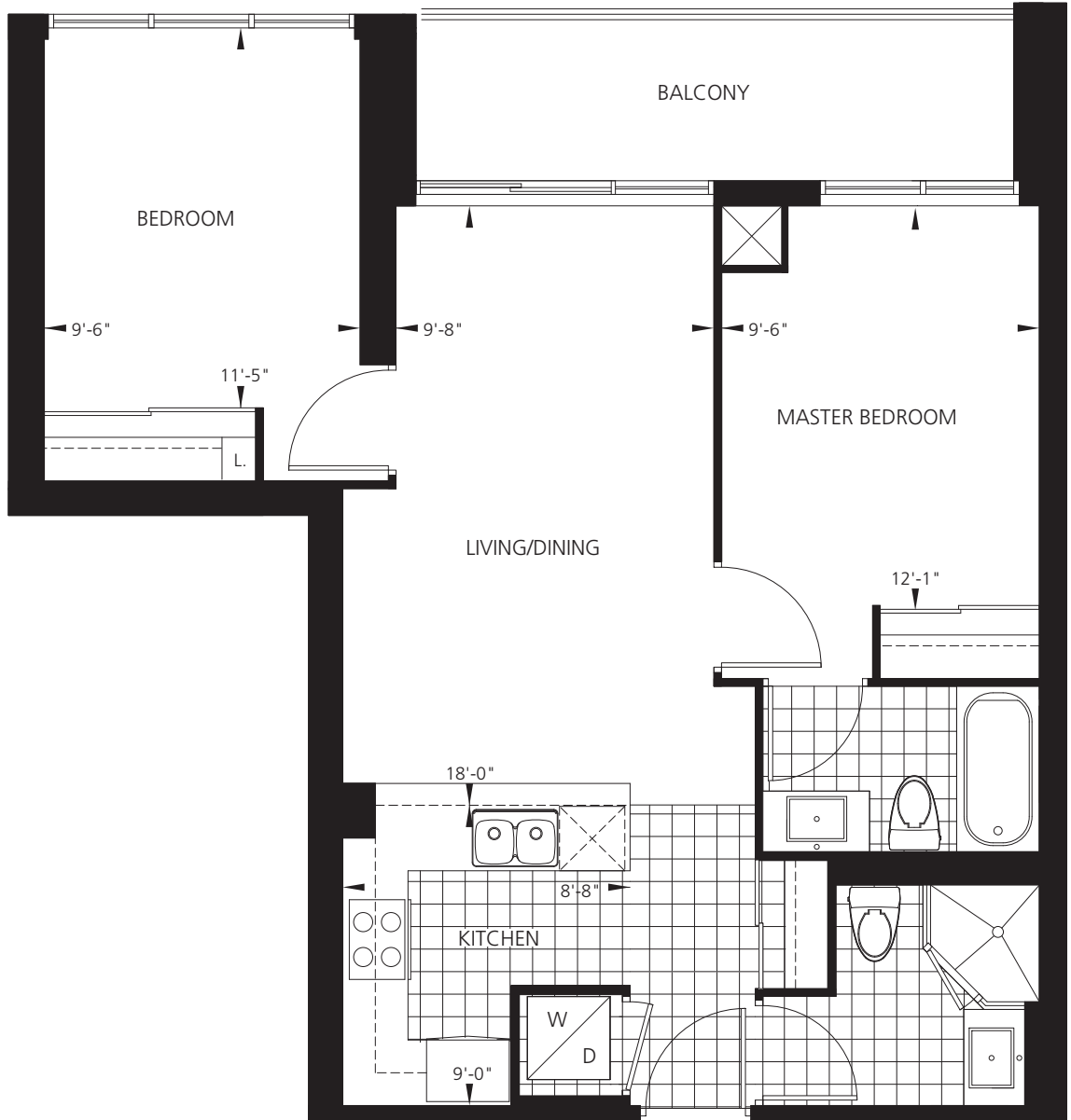
Luna

813 sq.ft. - 2 Bedroom Residence

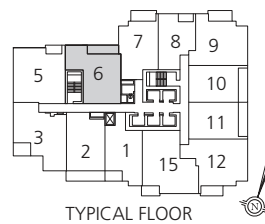


TOWER TWO

- North York City Centre's most desirable condominiums with direct underground subway access
- 2 spectacular glass and steel towers soaring 42 storeys in height
- Modern classic 2 storey lobby with 24 hour Concierge
- 20,000 sq. ft. Gibson Club with full recreation centre including indoor swimming pool and roof garden
- Direct underground access to Empress Walk Shopping Centre including Loblaws, restaurants and cinemas



Menkes New Condo Centre
 4954 Yonge Street, south of Mel Lastman Square, on the west side.
Hours:
 Monday to Thursday 12 noon to 6 pm
 Friday, Saturday, Sunday and holidays 12 noon to 5 pm
Tel: 416.730.9722



The dimensions shown on this plan are approximate only. Actual useable floor space within the unit may vary from any stated floor areas or dimensions on this plan. For more information on the method used for calculating the floor area of any unit, reference should be made to Builder Bulletin No. 22 published by Tarion.

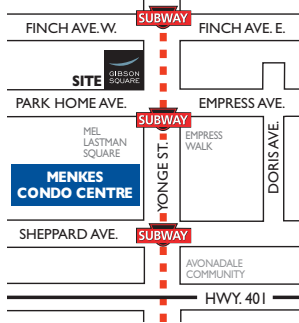
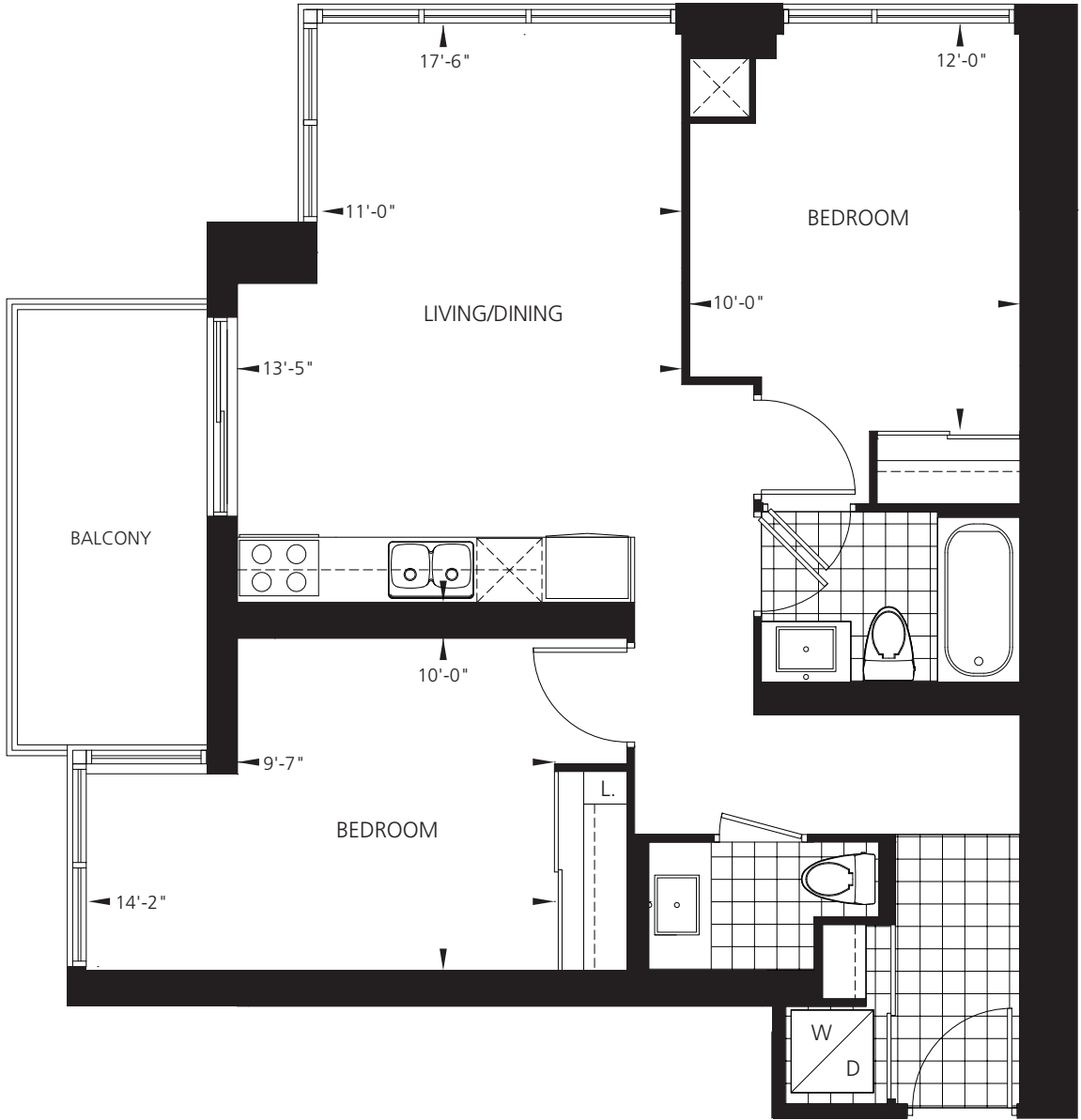


Juno

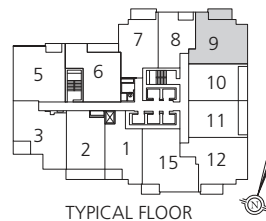
814 sq.ft. - 2 Bedroom Residence



- North York City Centre's most desirable condominiums with direct underground subway access
- 2 spectacular glass and steel towers soaring 42 storeys in height
- Modern classic 2 storey lobby with 24 hour Concierge
- 20,000 sq. ft. Gibson Club with full recreation centre including indoor swimming pool and roof garden
- Direct underground access to Empress Walk Shopping Centre including Loblaws, restaurants and cinemas



Menkes New Condo Centre
 4954 Yonge Street, south of Mel Lastman Square, on the west side.
Hours:
 Monday to Thursday 12 noon to 6 pm
 Friday, Saturday, Sunday and holidays 12 noon to 5 pm
Tel: 416.730.9722



The dimensions shown on this plan are approximate only. Actual useable floor space within the unit may vary from any stated floor areas or dimensions on this plan. For more information on the method used for calculating the floor area of any unit, reference should be made to Builder Bulletin No. 22 published by Tarion.

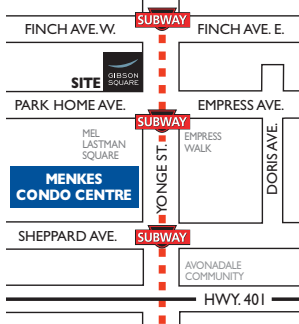


Starview

819 sq.ft. - 2 Bedroom Residence



- North York City Centre's most desirable condominiums with direct underground subway access
- 2 spectacular glass and steel towers soaring 42 storeys in height
- Modern classic 2 storey lobby with 24 hour Concierge
- 20,000 sq. ft. Gibson Club with full recreation centre including indoor swimming pool and roof garden
- Direct underground access to Empress Walk Shopping Centre including Loblaws, restaurants and cinemas



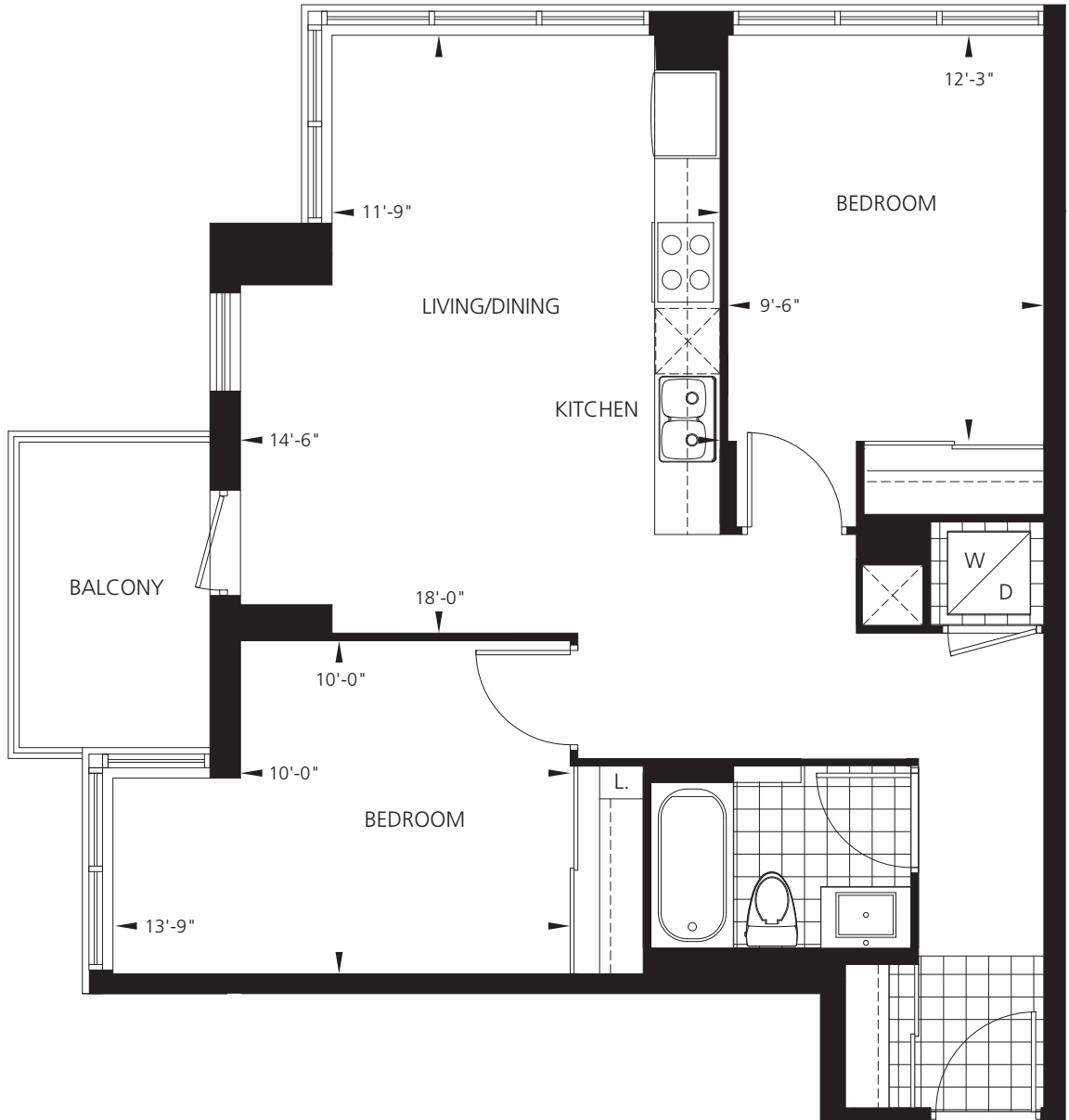
Condo Centre Hours:

Monday to Thursday
12 noon to 6 pm
Friday, Saturday, Sunday and holidays
12 noon to 5 pm

Tel: 416.730.9722



menkes.com



TYPICAL FLOOR



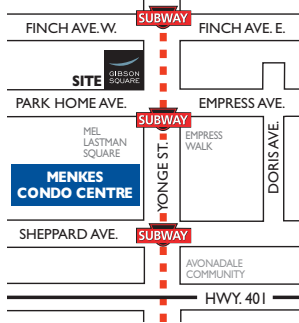
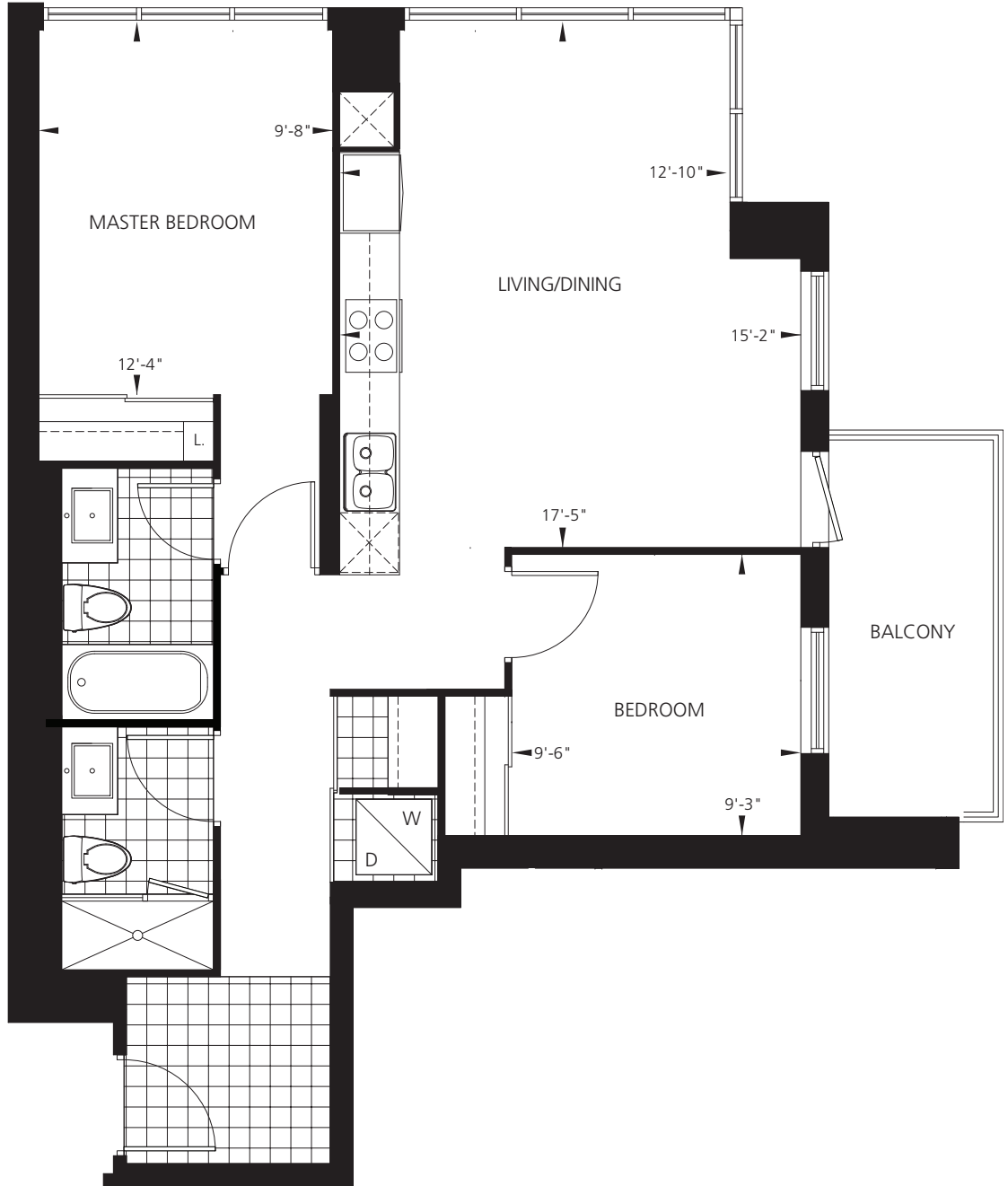
Jupiter

841 sq.ft. - 2 Bedroom Residence

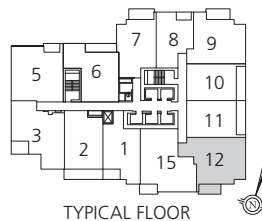


TOWER TWO

- North York City Centre's most desirable condominiums with direct underground subway access
- 2 spectacular glass and steel towers soaring 42 storeys in height
- Modern classic 2 storey lobby with 24 hour Concierge
- 20,000 sq. ft. Gibson Club with full recreation centre including indoor swimming pool and roof garden
- Direct underground access to Empress Walk Shopping Centre including Loblaws, restaurants and cinemas



Menkes New Condo Centre
 4954 Yonge Street, south of Mel Lastman Square, on the west side.
Hours:
 Monday to Thursday 12 noon to 6 pm
 Friday, Saturday, Sunday and holidays
 12 noon to 5 pm
Tel: 416.730.9722





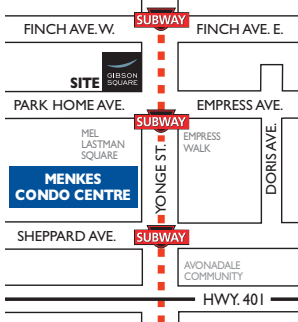
Panorama

858 sq.ft. - 2 Bedroom Residence

GIBSON SQUARE



- North York City Centre's most desirable condominiums with direct underground subway access
- 2 spectacular glass and steel towers soaring 42 storeys in height
- Modern classic 2 storey lobby with 24 hour Concierge
- 20,000 sq. ft. Gibson Club with full recreation centre including indoor swimming pool and roof garden
- Direct underground access to Empress Walk Shopping Centre including Loblaws, restaurants and cinemas



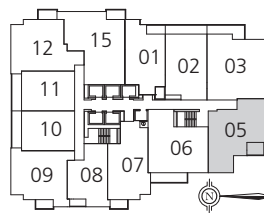
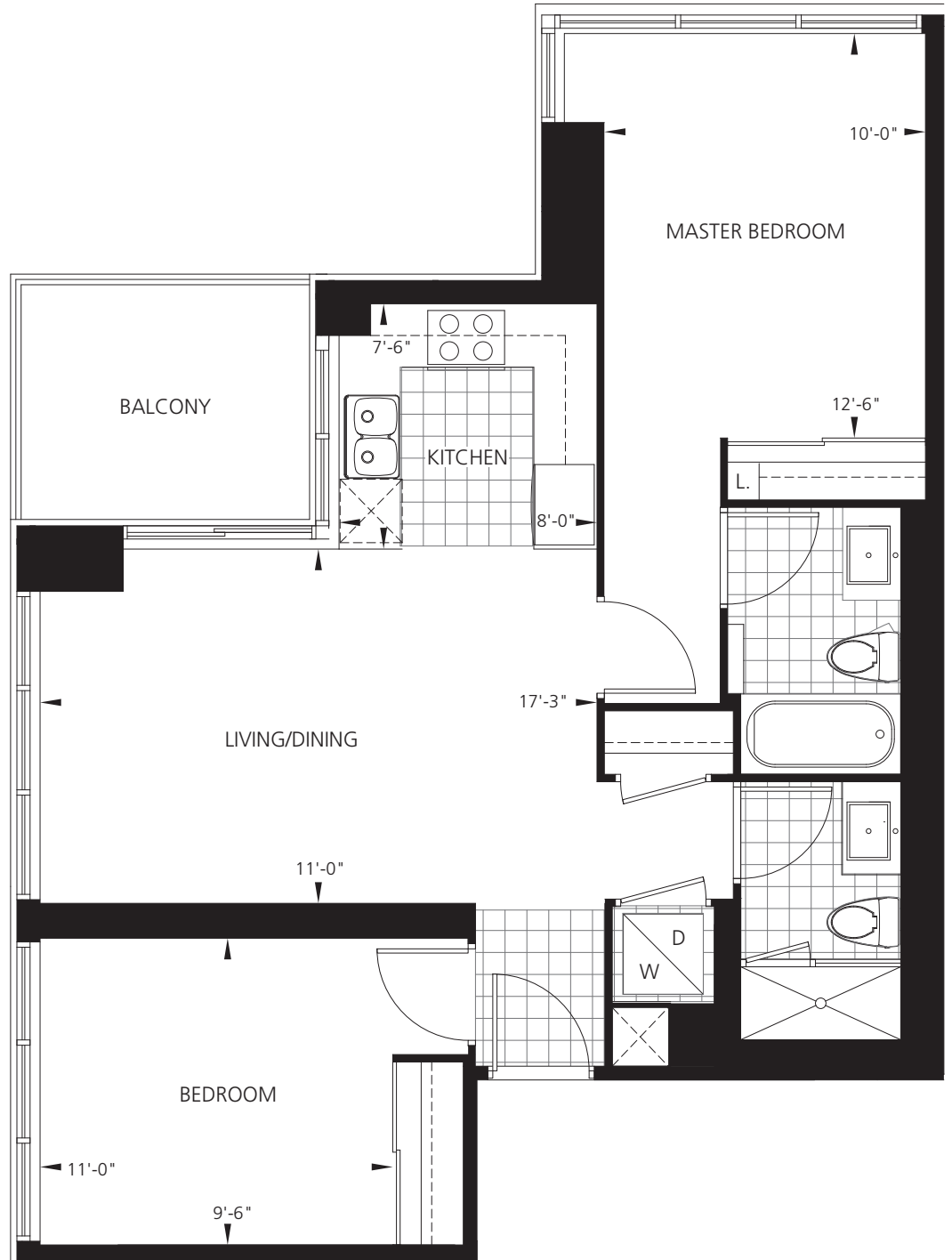
Condo Centre Hours:

Monday to Thursday
12 noon to 6 pm
Friday, Saturday, Sunday and holidays
12 noon to 5 pm

Tel: 416.730.9722



menkes.com



TYPICAL FLOOR



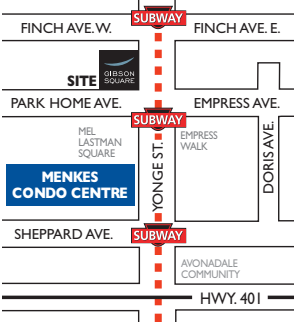
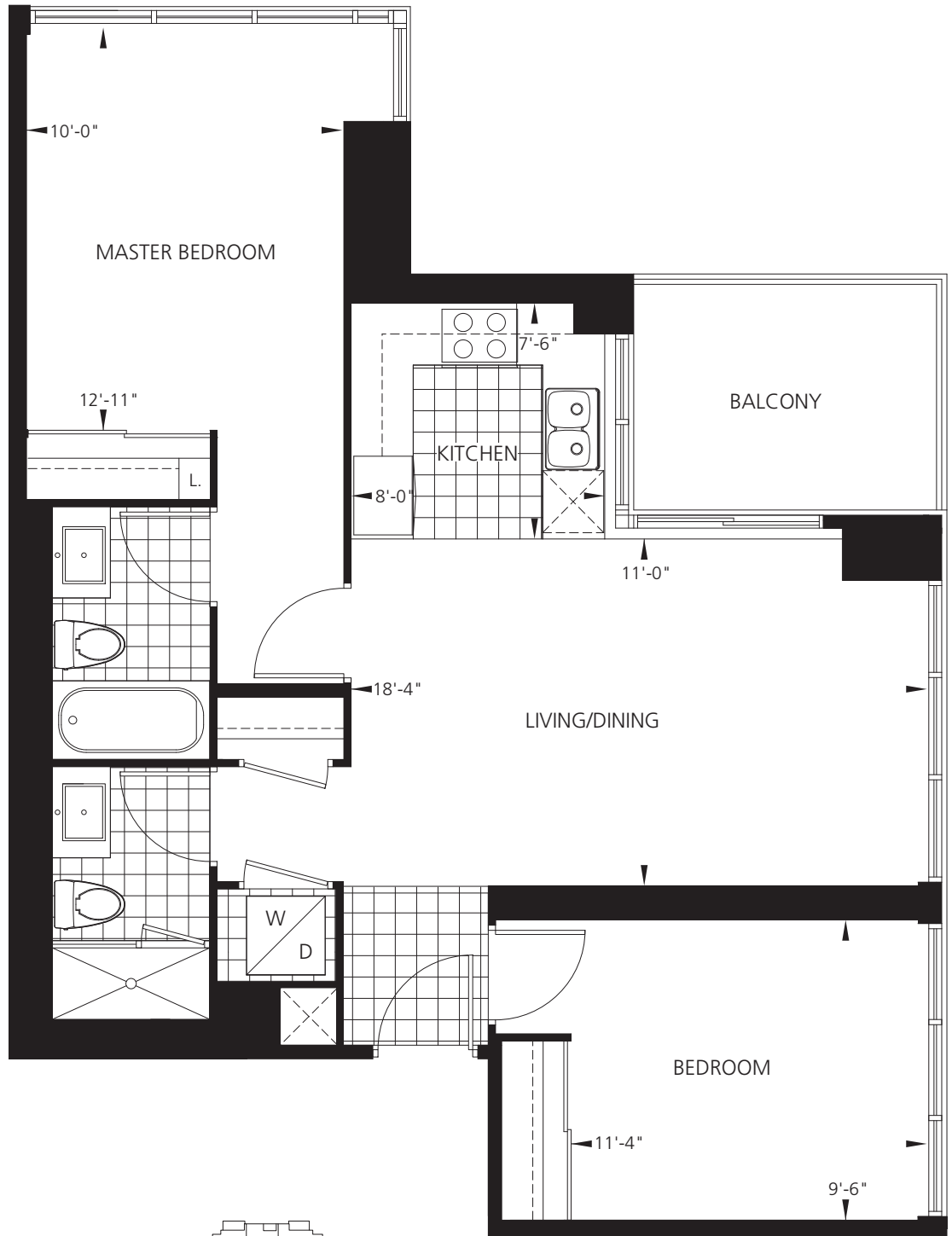
Azure

873 sq.ft. - 2 Bedroom Residence

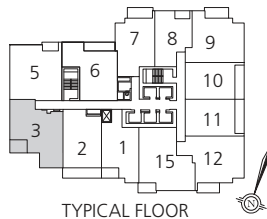


TOWER TWO

- North York City Centre's most desirable condominiums with direct underground subway access
- 2 spectacular glass and steel towers soaring 42 storeys in height
- Modern classic 2 storey lobby with 24 hour Concierge
- 20,000 sq. ft. Gibson Club with full recreation centre including indoor swimming pool and roof garden
- Direct underground access to Empress Walk Shopping Centre including Loblaws, restaurants and cinemas



Menkes New Condo Centre
 4954 Yonge Street, south of Mel Lastman Square, on the west side.
Hours:
 Monday to Thursday 12 noon to 6 pm
 Friday, Saturday, Sunday and holidays 12 noon to 5 pm
Tel: 416.730.9722



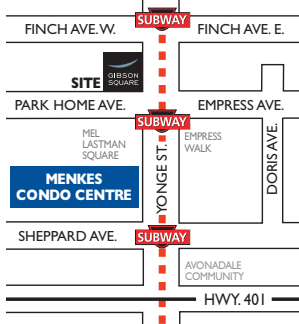


Pinnacle

893 sq.ft. - 2 Bedroom Residence



- North York City Centre's most desirable condominiums with direct underground subway access
- 2 spectacular glass and steel towers soaring 42 storeys in height
- Modern classic 2 storey lobby with 24 hour Concierge
- 20,000 sq. ft. Gibson Club with full recreation centre including indoor swimming pool and roof garden
- Direct underground access to Empress Walk Shopping Centre including Loblaws, restaurants and cinemas



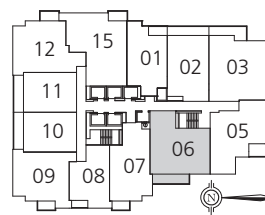
Condo Centre Hours:

Monday to Thursday
12 noon to 6 pm
Friday, Saturday, Sunday and holidays
12 noon to 5 pm

Tel: 416.730.9722



menkes.com



TYPICAL FLOOR



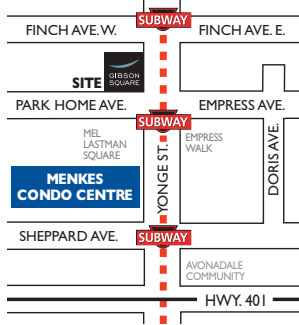
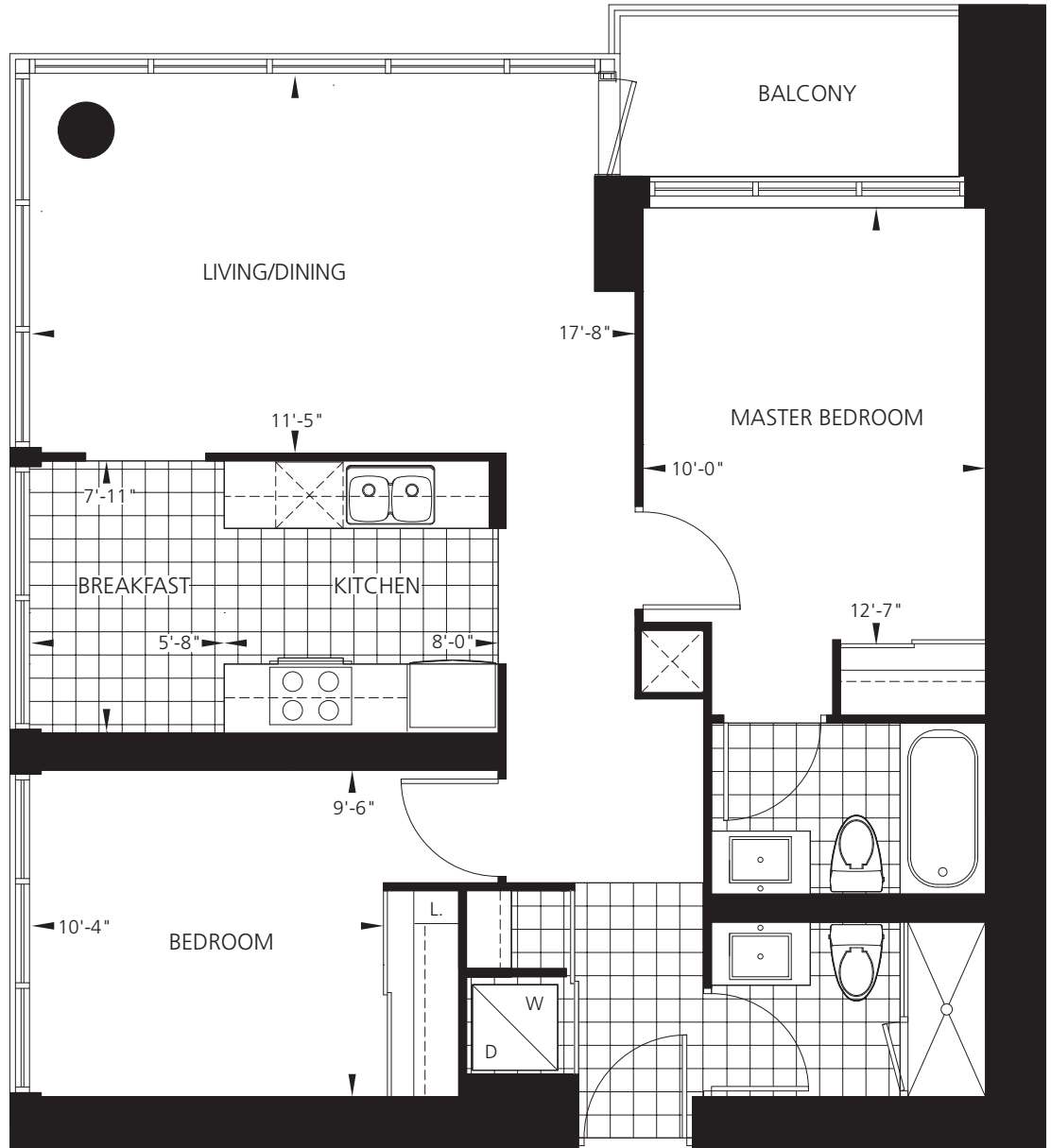
Solara

920 sq.ft. - 2 Bedroom Residence

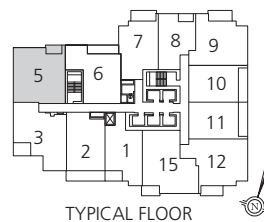


TOWER TWO

- North York City Centre's most desirable condominiums with direct underground subway access
- 2 spectacular glass and steel towers soaring 42 storeys in height
- Modern classic 2 storey lobby with 24 hour Concierge
- 20,000 sq. ft. Gibson Club with full recreation centre including indoor swimming pool and roof garden
- Direct underground access to Empress Walk Shopping Centre including Loblaws, restaurants and cinemas



Menkes New Condo Centre
 4954 Yonge Street, south of Mel Lastman Square, on the west side.
Hours:
 Monday to Thursday 12 noon to 6 pm
 Friday, Saturday, Sunday and holidays 12 noon to 5 pm
Tel: 416.730.9722



The dimensions shown on this plan are approximate only. Actual useable floor space within the unit may vary from any stated floor areas or dimensions on this plan. For more information on the method used for calculating the floor area of any unit, reference should be made to Builder Bulletin No. 22 published by Tarion.

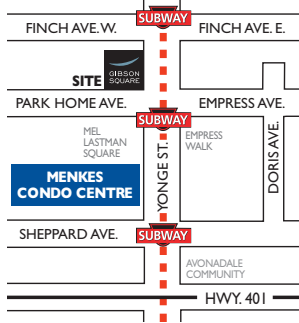
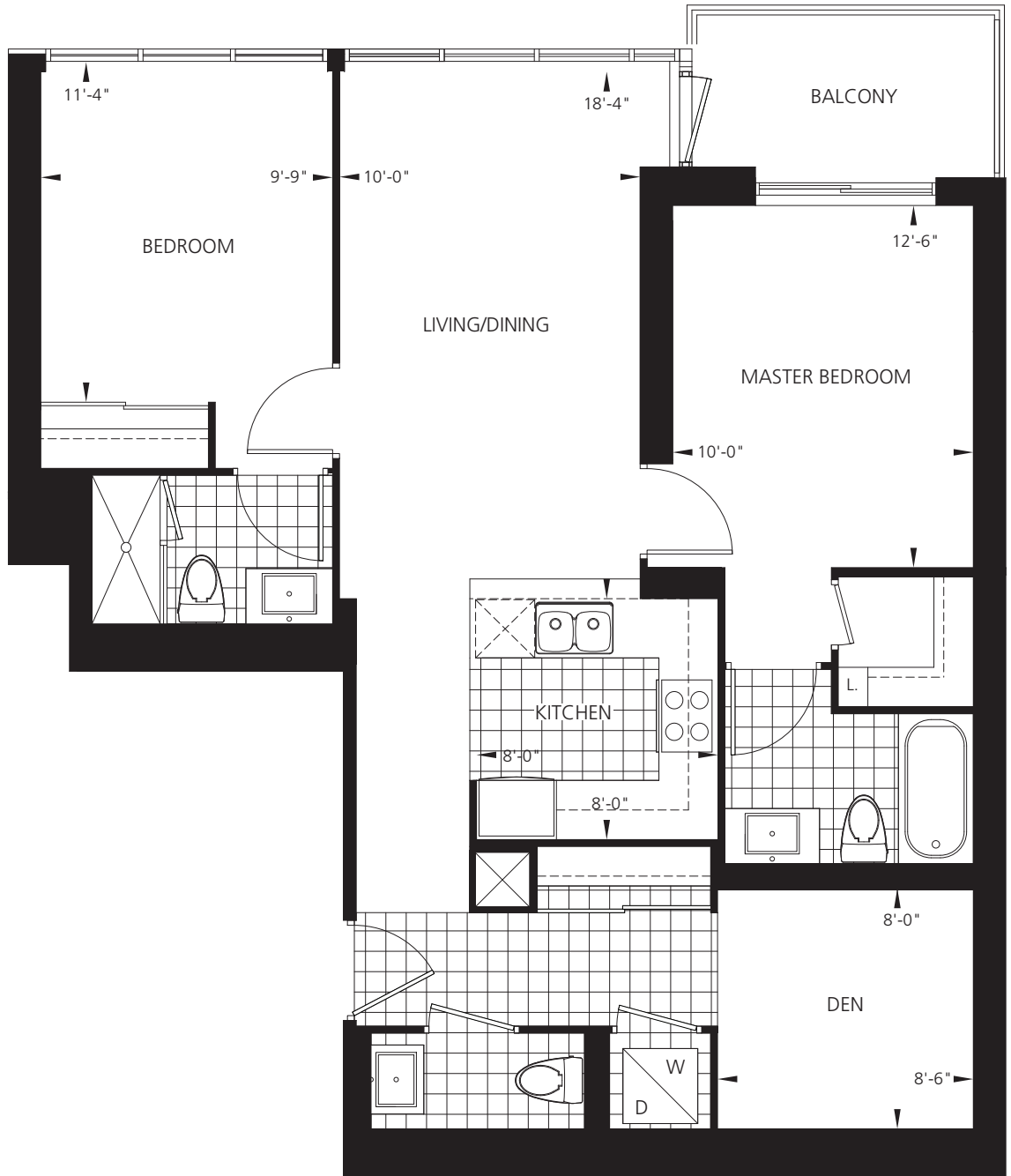


Saturn

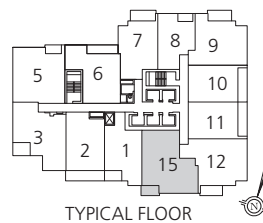
997 sq.ft. - 2 Bedroom Plus Den Residence



- North York City Centre's most desirable condominiums with direct underground subway access
- 2 spectacular glass and steel towers soaring 42 storeys in height
- Modern classic 2 storey lobby with 24 hour Concierge
- 20,000 sq. ft. Gibson Club with full recreation centre including indoor swimming pool and roof garden
- Direct underground access to Empress Walk Shopping Centre including Loblaws, restaurants and cinemas



Menkes New Condo Centre
 4954 Yonge Street, south of Mel Lastman Square, on the west side.
Hours:
 Monday to Thursday 12 noon to 6 pm
 Friday, Saturday, Sunday and holidays 12 noon to 5 pm
Tel: 416.730.9722



The dimensions shown on this plan are approximate only. Actual useable floor space within the unit may vary from any stated floor areas or dimensions on this plan. For more information on the method used for calculating the floor area of any unit, reference should be made to Builder Bulletin No. 22 published by Tarion.



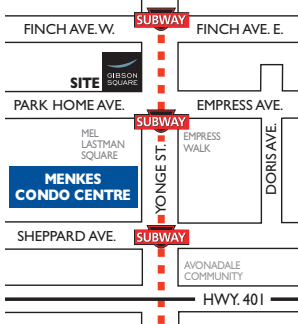
Infinity

998 sq.ft. - 2 Bedroom Plus Den Residence

GIBSON SQUARE



- North York City Centre's most desirable condominiums with direct underground subway access
- 2 spectacular glass and steel towers soaring 42 storeys in height
- Modern classic 2 storey lobby with 24 hour Concierge
- 20,000 sq. ft. Gibson Club with full recreation centre including indoor swimming pool and roof garden
- Direct underground access to Empress Walk Shopping Centre including Loblaws, restaurants and cinemas



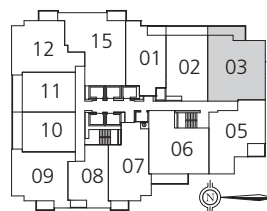
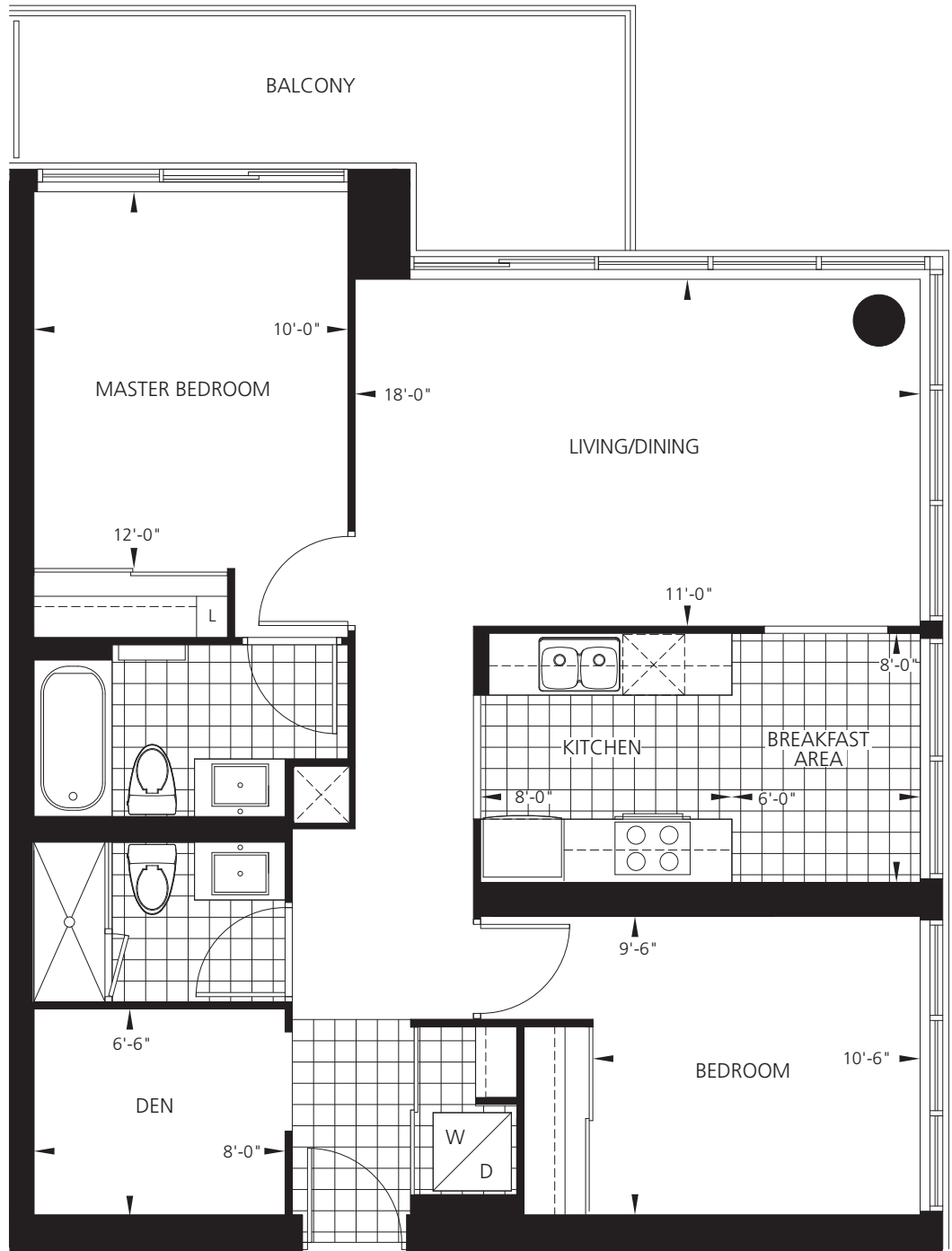
Condo Centre Hours:

Monday to Thursday
12 noon to 6 pm
Friday, Saturday, Sunday and holidays
12 noon to 5 pm

Tel: 416.730.9722



menkes.com



TYPICAL FLOOR