

Promenade

REAL WHITE ROCK LIVING



15747 Marine Drive



A LIMITED COLLECTION OF

18

SHORELINE RESIDENCE

- 1, 2, and 3 bedroom residence
- Up to 1,257 square feet of spacious living
- 5 minutes from over 50 restaurants and shops, 8 km of sandy beach, and 2.5 km of shoreline trails
- Move in Winter 2012



For Further Information Please Contact:

TODD ANTIFAEV & JON MOSS
HomeLife Benchmark Realty Corp.

2 1920 152nd Street, Surrey, BC V4A 4N6

T. 604.531.1111 F. 604.531.8114

E. todd@marketing604.com; jon@marketing604.com

JON & TODD

MARKETING 604.COM





RESIDENCES

Homes

PROMENADE IS composed of 18 signature shoreline residences that define a new style of living in this sought after community. To embrace the best of this rich location, Promenade's stylish interiors welcome you home to expansive views of Semiahmoo Bay and Beyond. Here, you can enjoy gourmet kitchens with rich high-gloss cabinetry and sleep stainless steel appliances, and spacious floor plans - designed for entertaining and living the way you want.

Developer

INTERGULF DEVELOPMENT GROUP is dedicated to the highest standards of development, design and construction. Our distinctive communities respect and enhance the built environment, and our homes are built on tradition of excellence, with attention to detail. Superior materials and quality craftsmanship.

Location

PROMINENTLY SITUATED along Marine Drive, between Parker and Lee Street in White Rock, you are less than 5 minutes from over 50 restaurants and shops, 8 km of sandy beach, and 2.5 km of shoreline trails.

Amenities

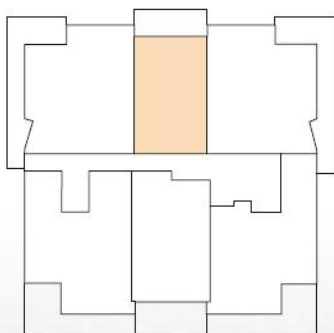
QUAINT CAFES. Cultural hot spots. Endless outdoor adventures. These are just a few of the amenities in this rare community that blends local flavour with worldly inspirations. Whether you prefer a relaxing stroll along the sandy beach, a patio or dinner with close friends, or an afternoon of golf at one of the world-class courses nearby - the options are endless in this unique community.



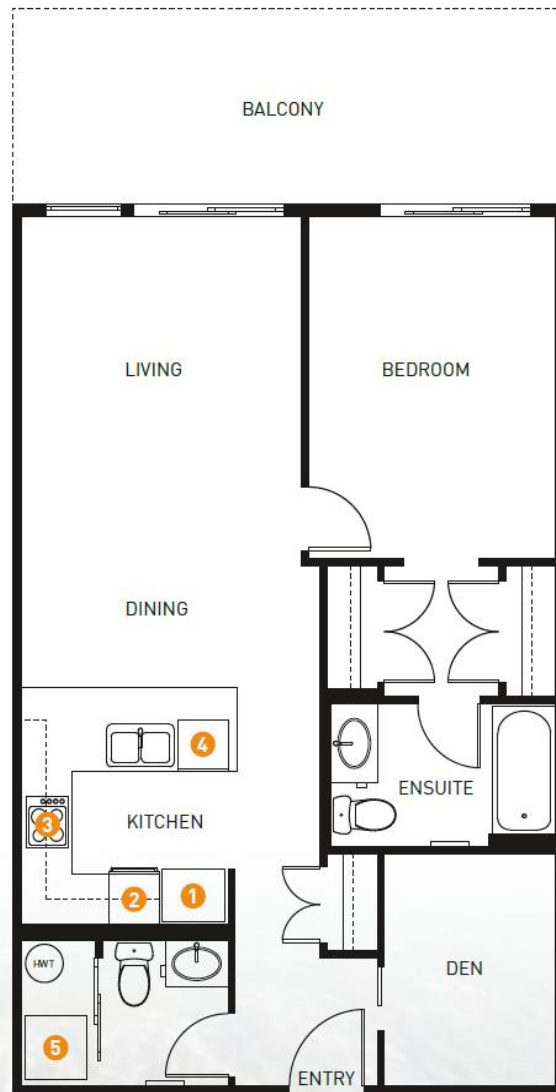
Plan A

774 sq ft

- 1 KitchenAid French Door Refrigerator
- 2 KitchenAid Wall Oven & Microwave
- 3 KitchenAid Ceramic Glass Electric Cooktop & Wall Hood
- 4 KitchenAid Integrated Dishwasher
- 5 LG Washer & Dryer



Floor 1, 2, 3



N



Promenade

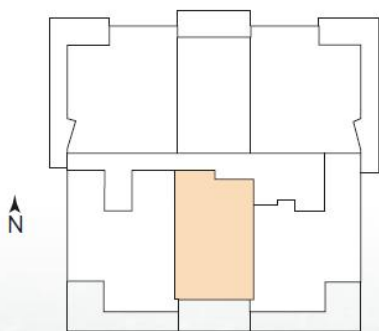
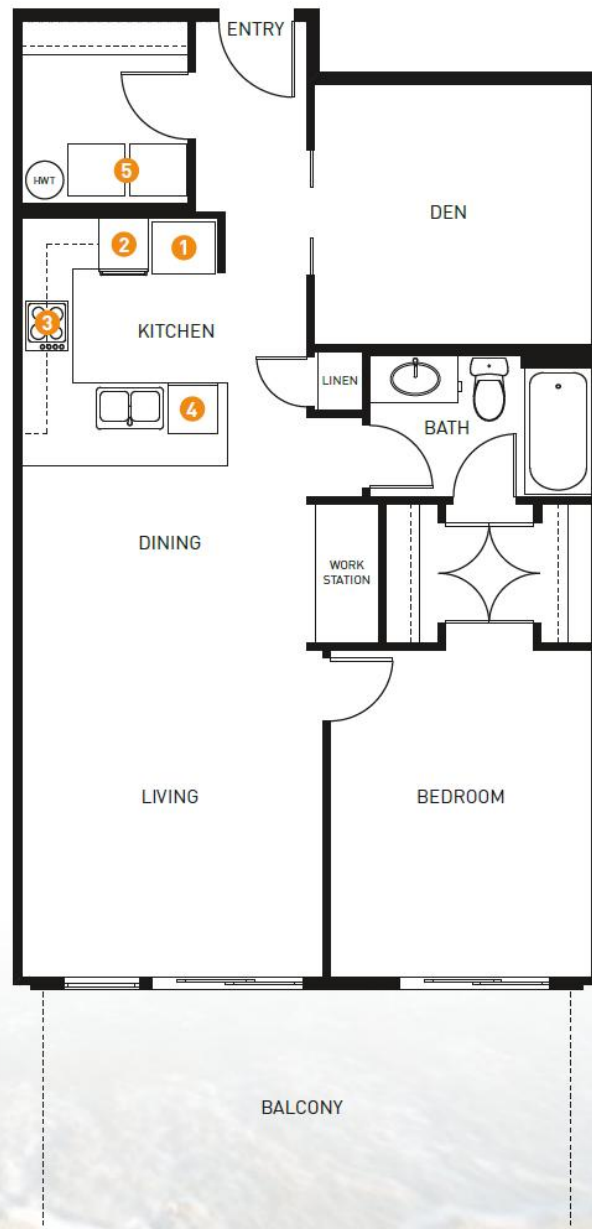
REAL WHITE ROCK LIVING



Plan B

881 sq ft

- 1 KitchenAid French Door Refrigerator
- 2 KitchenAid Wall Oven & Microwave
- 3 KitchenAid Ceramic Glass Electric Cooktop & Wall Hood
- 4 KitchenAid Integrated Dishwasher
- 5 LG Washer & Dryer



Floor 1, 2, 3



Promenade

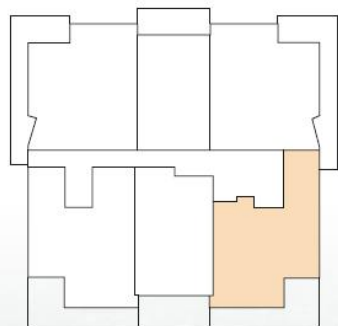
REAL WHITE ROCK LIVING



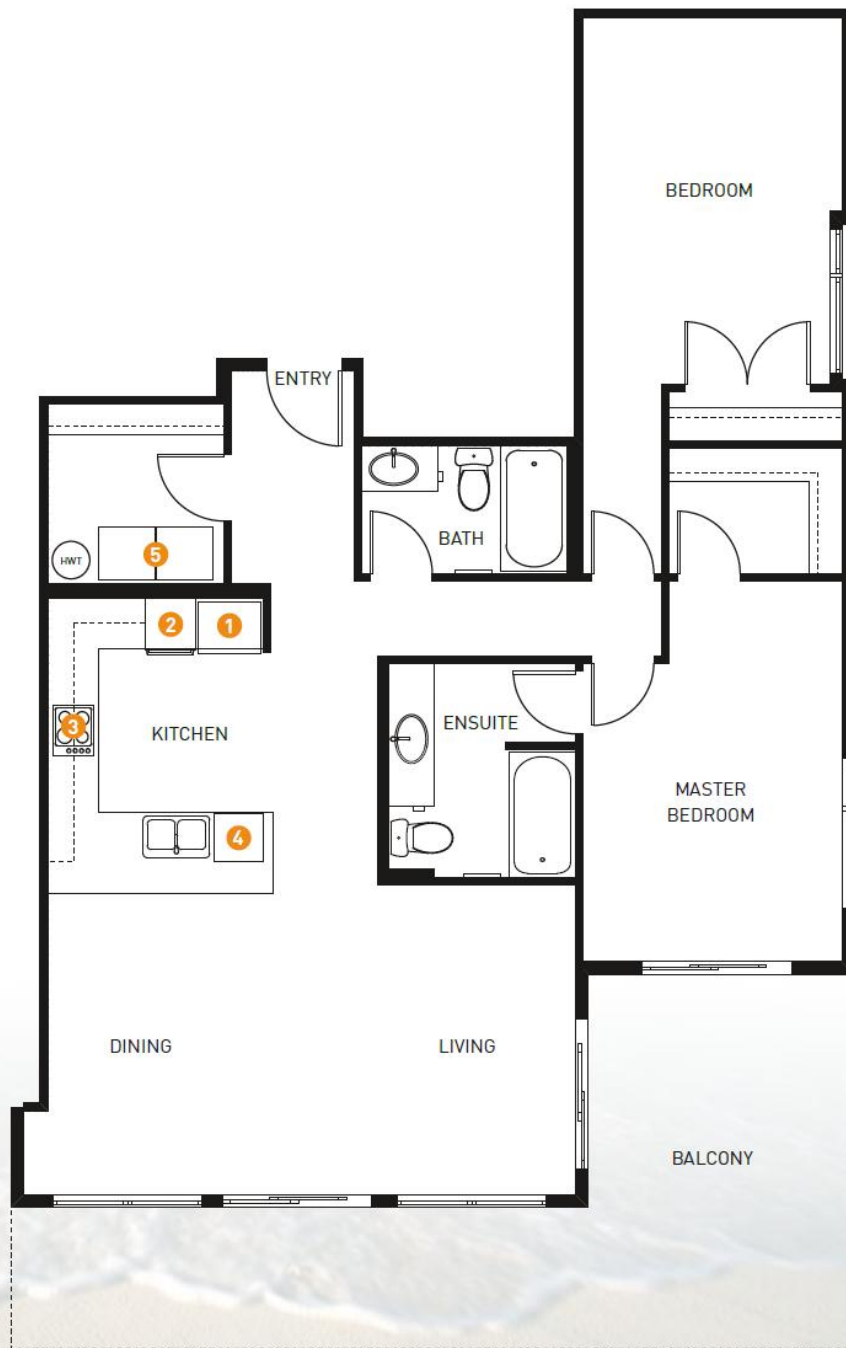
Plan C

1130 sq ft

- 1 KitchenAid French Door Refrigerator
- 2 KitchenAid Wall Oven & Microwave
- 3 KitchenAid Ceramic Glass Electric Cooktop & Wall Hood
- 4 KitchenAid Integrated Dishwasher
- 5 LG Washer & Dryer



Floor 1, 2, 3

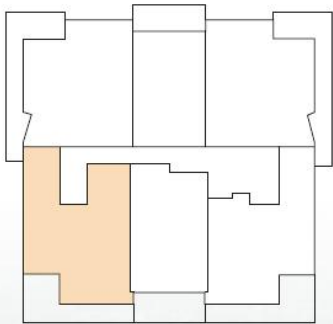




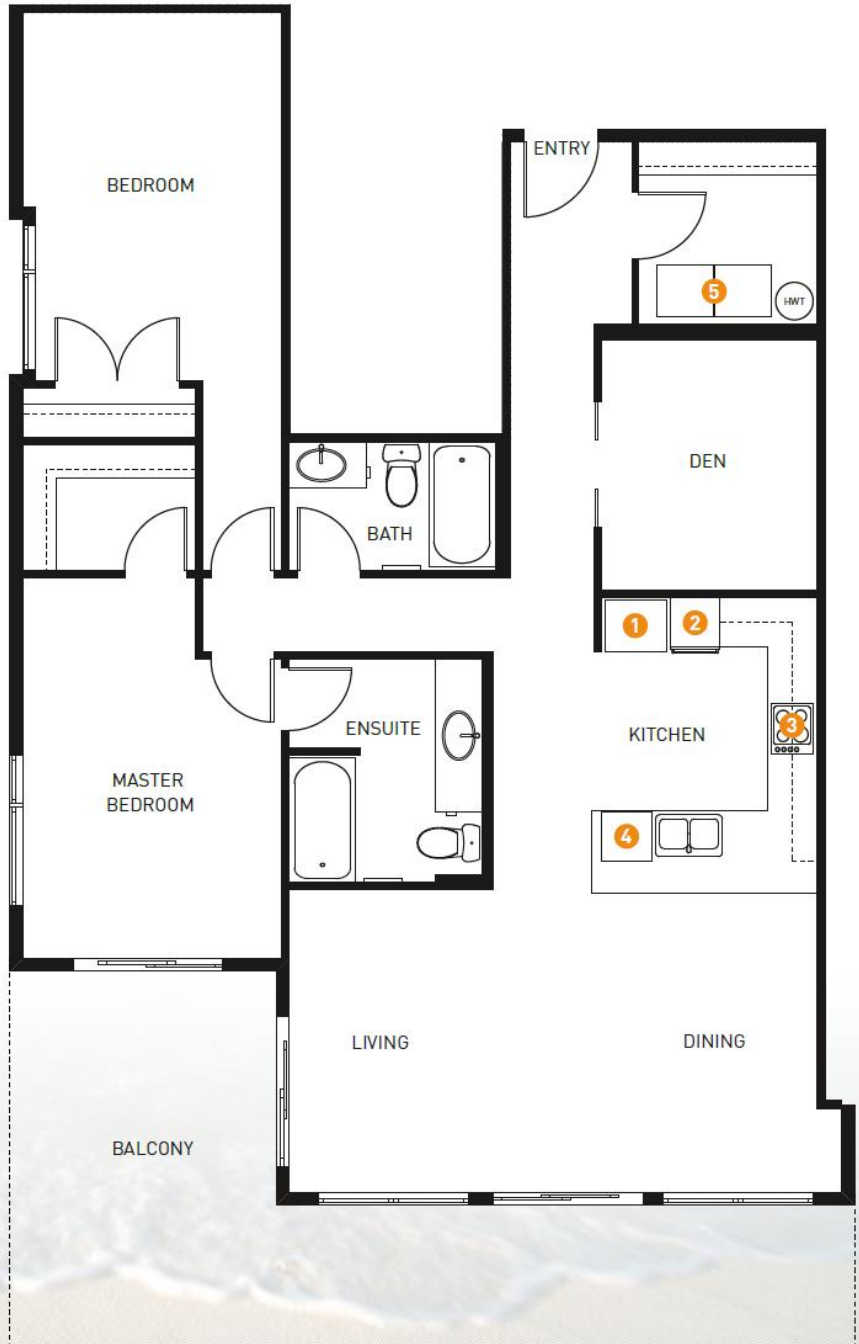
Plan E

1257 sq ft

- 1 KitchenAid French Door Refrigerator
- 2 KitchenAid Wall Oven & Microwave
- 3 KitchenAid Ceramic Glass Electric Cooktop & Wall Hood
- 4 KitchenAid Integrated Dishwasher
- 5 LG Washer & Dryer



Floor 3



N

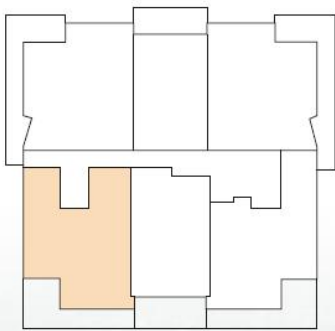




Plan E1

1205 sq ft

- 1 KitchenAid French Door Refrigerator
- 2 KitchenAid Wall Oven & Microwave
- 3 KitchenAid Ceramic Glass Electric Cooktop & Wall Hood
- 4 KitchenAid Integrated Dishwasher
- 5 LG Washer & Dryer



Floor 1

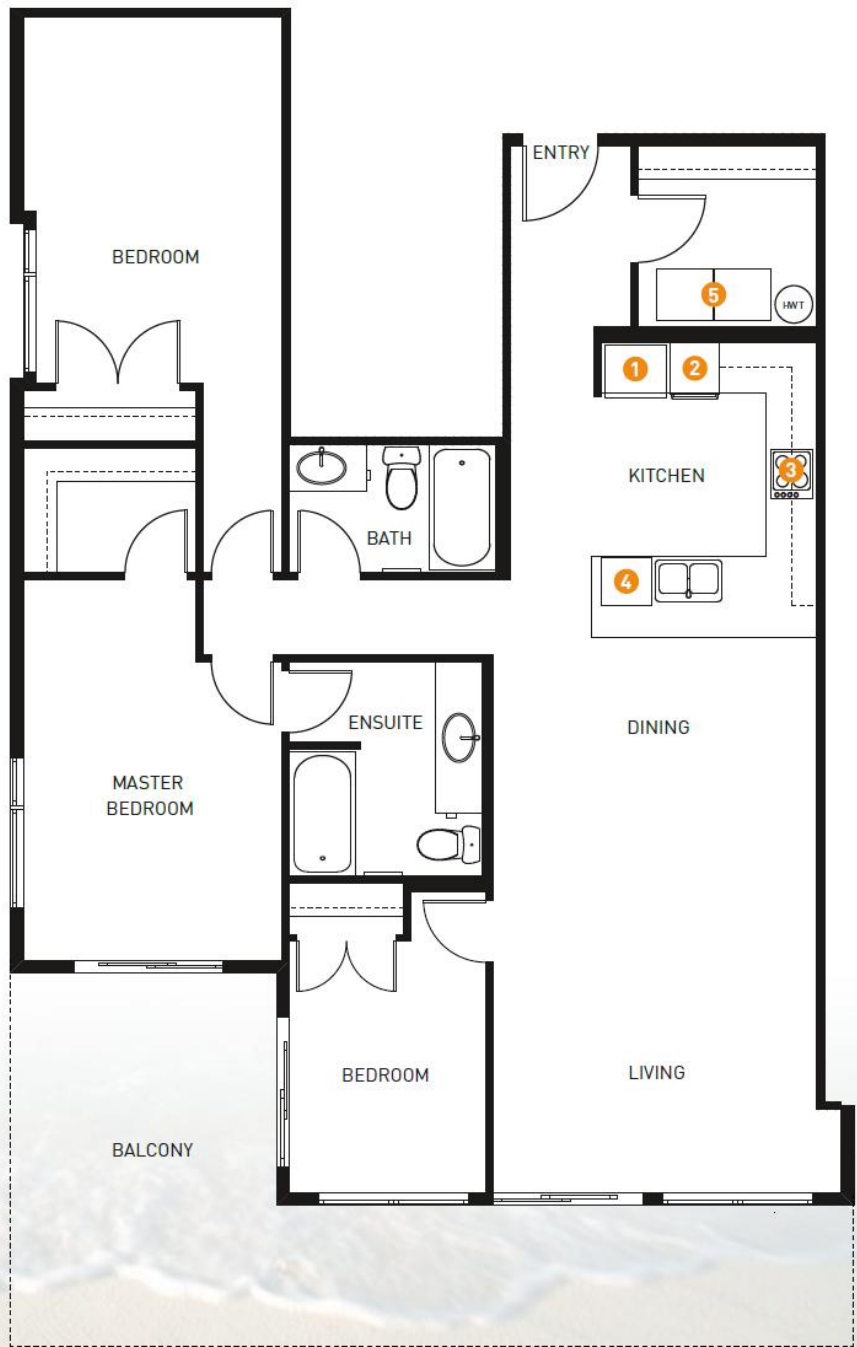




Plan E2

1257 sq ft

- 1 KitchenAid French Door Refrigerator
- 2 KitchenAid Wall Oven & Microwave
- 3 KitchenAid Ceramic Glass Electric Cooktop & Wall Hood
- 4 KitchenAid Integrated Dishwasher
- 5 LG Washer & Dryer



Floor 2



Promenade

REAL WHITE ROCK LIVING



LOCATION

JUST MINUTES AWAY



Just 10 Minutes Away:

- Centennial & Grant Park
- Rialto Theatre
- Semiahmoo Shopping Centre
 - PriceSmart foods
 - Shoppers Drug Mart
 - Over 50 stores and restaurants

- FloMotion Fitness & Yoga
- Rialto Theatre
- White Rock Playhouse
- Peace Portal Golf Course
- Hazelmere Golf & Tennis Club
- USA via Peace Arch Border

Just 40 Minutes:

- Vancouver
- YVR International Airport



PRICE LIST



PLEASE CONTACT

JON & TODD
[MARKETING 604.COM](http://MARKETING.604.COM)

604.531.1111



REAL WHITE ROCK LIVING