

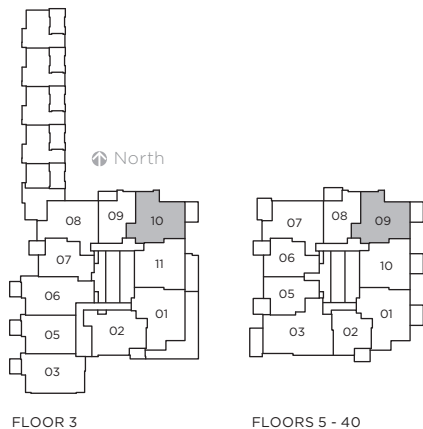
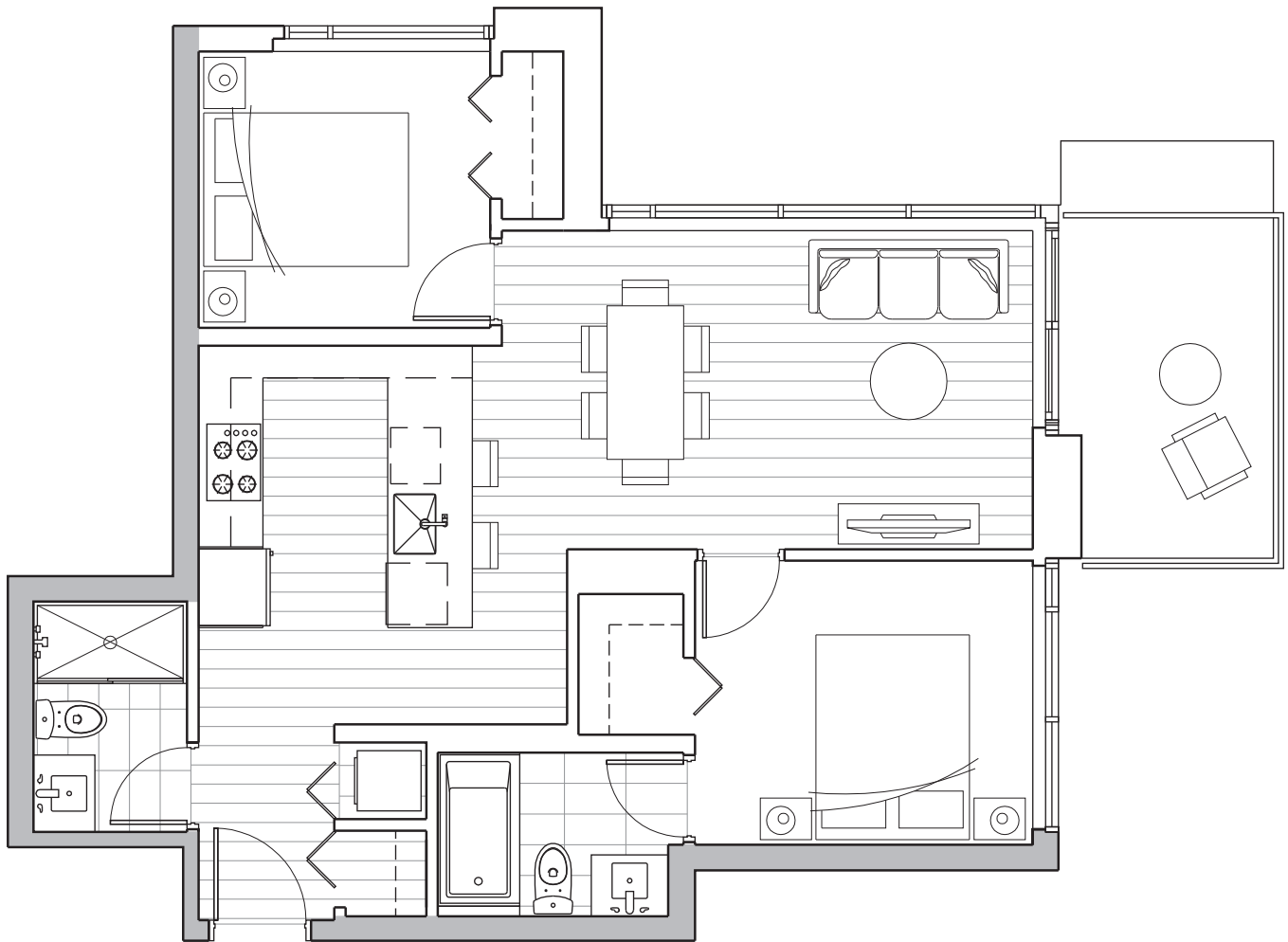
Suites 09 + 310

2 Bedroom

Enclosed Area	Balcony/ Terrace	Total Area
---------------	---------------------	------------

Floors 3 - 40		
763 sf	87 sf	850 sf

Suite 09 is an adaptable unit on floors 5 - 16 only.



MET2

THE DEVELOPER RESERVES THE RIGHT TO MAKE MODIFICATIONS AND CHANGES TO FEATURES AND FINISHES, BRANDS, MATERIALS, BUILDING AND LANDSCAPE DESIGN, SPECIFICATIONS, CEILING HEIGHTS, NUMBER OF FLOORS, NUMBER OF UNITS, FLOORING PATTERNS AND FLOOR PLANS WITHOUT NOTIFICATION. APPROXIMATE SUITE SIZES ARE COMPUTED FROM THE OUTSIDE FACE OF EXTERIOR WALLS, THE OUTSIDE FACE OF CORRIDOR AND COMMON WALLS, AND THE CENTERLINE OF WALLS ADJACENT TO OTHER STRATA LOTS. APPROXIMATE MEASUREMENTS FOR EXTERIOR BALCONIES AND TERRACES ARE COMPUTED FROM THE OUTSIDE FACE OF EXTERIOR WALLS TO THE SLAB EDGES OF THE OUTSIDE FACE OF PARAPETS. ANY FLOORING PATTERN SHOWN ON THE PLAN DOES NOT INDICATE THE ACTUAL WOOD OR LAMINATE, TILE OR PAVER, SHAPE, SIZE OR DIRECTION INSTALLED. THE SAME SUITE TYPE MAY VARY FROM FLOOR TO FLOOR AND/OR BE SLIGHTLY ALTERED DEPENDING ON FLOOR PLATE ORIENTATION. WINDOW AND MULLION CONFIGURATIONS MAY VARY BY FLOOR. ALL ILLUSTRATIONS REFLECT THE ARTIST'S AND ARCHITECT'S INTERPRETATION OF THE PROJECT AND DO NOT TAKE INTO ACCOUNT THE NEIGHBORING BUILDINGS, PHYSICAL STRUCTURES, STREETS AND LANDSCAPE. THESE MATTERS WILL BE GOVERNED ENTIRELY BY THE TERMS OF THE APPLICABLE DISCLOSURE STATEMENT AND PURCHASE CONTRACT IN EACH CASE. THIS IS NOT AN OFFERING FOR SALE. ANY SUCH OFFERING MAY ONLY BE MADE WITH THE APPLICABLE DISCLOSURE STATEMENT AND AGREEMENT OF PURCHASE AND SALE. CONCORD MET 2 LIMITED PARTNERSHIP E&OE